

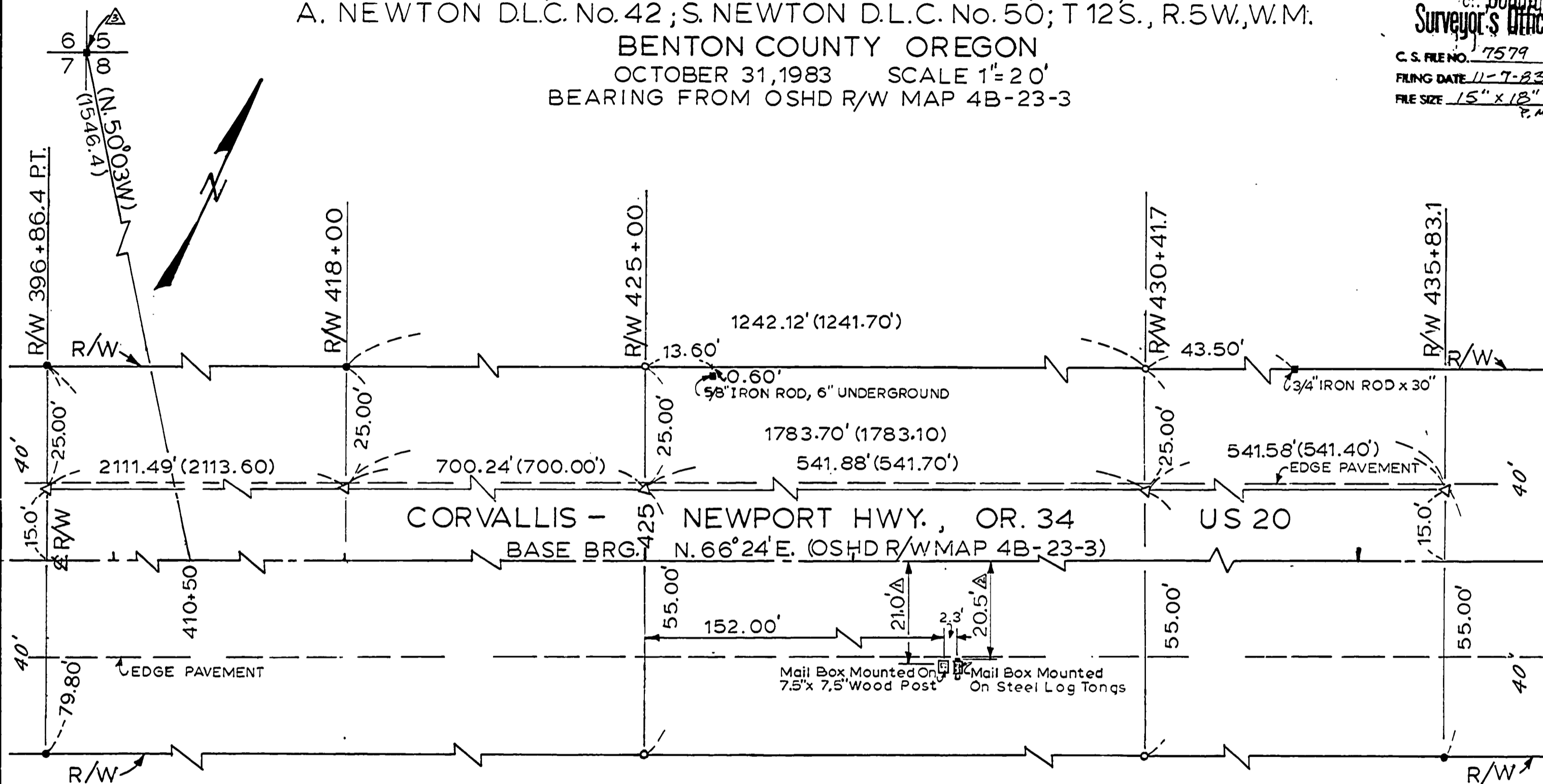
7579

7579

SURVEY FOR OREGON STATE HIGHWAY DIVISION
 N.E. 1/4 SEC. 7; N.W. 1/4 SEC. 8; N.E. 1/4 SEC. 8; S.E. 1/4 SEC. 5
 A. NEWTON D.L.C. No. 42; S. NEWTON D.L.C. No. 50; T 12 S., R. 5 W., W.M.
 BENTON COUNTY OREGON
 OCTOBER 31, 1983 SCALE 1"=20'
 BEARING FROM OSHD R/W MAP 4B-23-3

Benton County
 Oregon
 Surveyor's Office

C.S. FILE NO. 7579
 FILING DATE 11-7-83
 FILE SIZE 15" x 18"
 P.M.B.



- △ Dimension To Face Of 7.5" x 7.5" Wood Post
- ▲ Dimension To Points Of Steel Log Tong
- ▲ At Section Corner Found; 1 1/2" Window Weight, Found 19" Oak Bearing With BLM Tag; "Dis. 7.2', Bearing S. 15° E., T. 12 S., R. 5 W., Sec. 6; R.L.S. 1824, 10/22/82". Measured 7.2' From Center Of Tree.

OSHD = OREGON STATE HIGHWAY DIVISION

LEGEND

- RECORD MEASURE () OSHD R/W MAP 4B-23-3
- MONUMENTS FOUND • 5/8" x 36" IRON ROD, OSHD R/W MAP 4B-23-3; ■ OTHER MONUMENTS FOUND
- MONUMENTS SET ▽ PK (PARKER KALON) NAIL
- MONUMENTS SET ○ 5/8" x 30" IRON ROD/ALUMINUM CAP STAMPED OSHD, STEEL POST AND PADDLE ALONGSIDE

NARRATIVE

THE PURPOSE OF THIS SURVEY IS TO REESTABLISH THE NORTH AND SOUTH R/W LINES BETWEEN STATIONS 396+86.4 AND 435+83.1. IRON RODS WERE REESTABLISHED AS SHOWN BY PROPORTIONING BETWEEN FOUND IRON RODS AS SHOWN. OSHD R/W MAP 4B-23-3

Pete Fidler

PETE FIDLER
 OSHD
 SALEM, OR. 97310