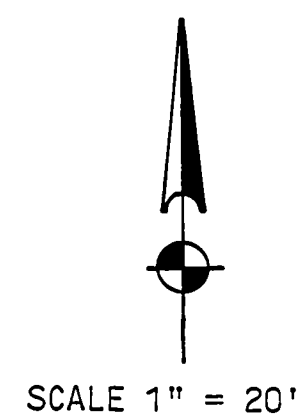


7588

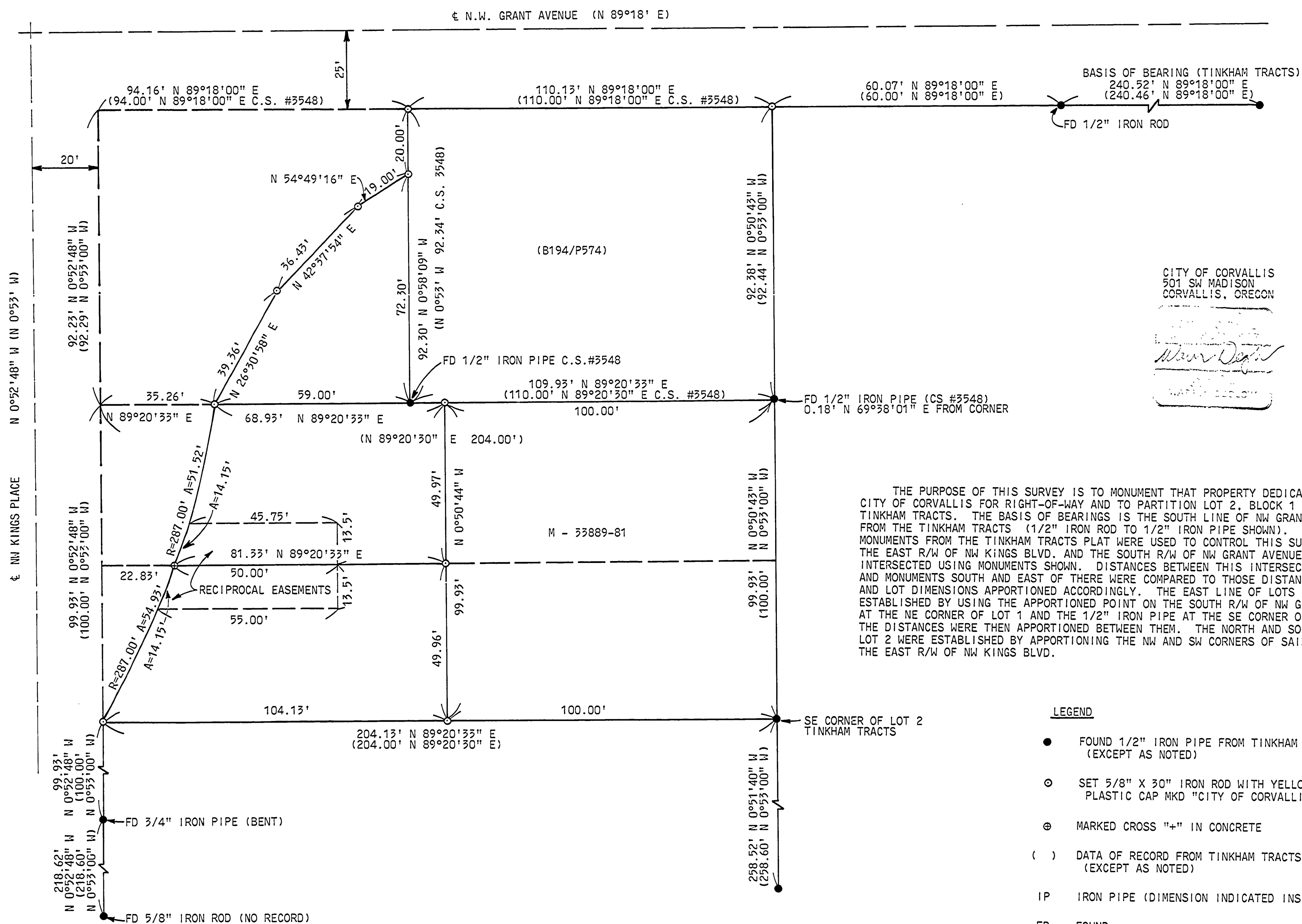
7588



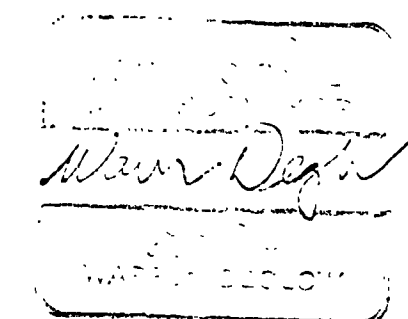
SURVEY FOR  
CITY OF CORVALLIS  
OF LOTS 1 & 2, BLOCK 1  
OF THE  
TINKHAM TRACTS  
W.F. DIXON DLC NO. 50  
SE 1/4 SECTION 27, T.11S, R.5W, W.M.  
BENTON COUNTY, OREGON  
MONUMENTS SET NOV. 14, 1983

Benton County  
Surveyor's Office

C.S. FILE NO. 7588  
FILING DATE 12-8-83  
FILE SIZE 18" x 24" R.H.D.



CITY OF CORVALLIS  
501 SW MADISON  
CORVALLIS, OREGON



THE PURPOSE OF THIS SURVEY IS TO MONUMENT THAT PROPERTY DEDICATED BY THE CITY OF CORVALLIS FOR RIGHT-OF-WAY AND TO PARTITION LOT 2, BLOCK 1 OF THE TINKHAM TRACTS. THE BASIS OF BEARINGS IS THE SOUTH LINE OF NW GRANT AVENUE, FROM THE TINKHAM TRACTS (1/2" IRON ROD TO 1/2" IRON PIPE SHOWN). DATA AND MONUMENTS FROM THE TINKHAM TRACTS PLAT WERE USED TO CONTROL THIS SURVEY. THE EAST R/W OF NW KINGS BLVD. AND THE SOUTH R/W OF NW GRANT AVENUE WERE INTERSECTED USING MONUMENTS SHOWN. DISTANCES BETWEEN THIS INTERSECTION POINT AND MONUMENTS SOUTH AND EAST OF THERE WERE COMPARED TO THOSE DISTANCES OF RECORD AND LOT DIMENSIONS APPORTIONED ACCORDINGLY. THE EAST LINE OF LOTS 1 & 2 WERE ESTABLISHED BY USING THE APPORTIONED POINT ON THE SOUTH R/W OF NW GRANT AVENUE AT THE NE CORNER OF LOT 1 AND THE 1/2" IRON PIPE AT THE SE CORNER OF LOT 2. THE DISTANCES WERE THEN APPORTIONED BETWEEN THEM. THE NORTH AND SOUTH LINES OF LOT 2 WERE ESTABLISHED BY APPORTIONING THE NW AND SW CORNERS OF SAID LOT 2 ALONG THE EAST R/W OF NW KINGS BLVD.

LEGEND

- FOUND 1/2" IRON PIPE FROM TINKHAM TRACTS (EXCEPT AS NOTED)
- SET 5/8" X 30" IRON ROD WITH YELLOW PLASTIC CAP MKD "CITY OF CORVALLIS"
- ⊕ MARKED CROSS "+" IN CONCRETE
- ( ) DATA OF RECORD FROM TINKHAM TRACTS (EXCEPT AS NOTED)
- IP IRON PIPE (DIMENSION INDICATED INSIDE DIA.)
- FD FOUND