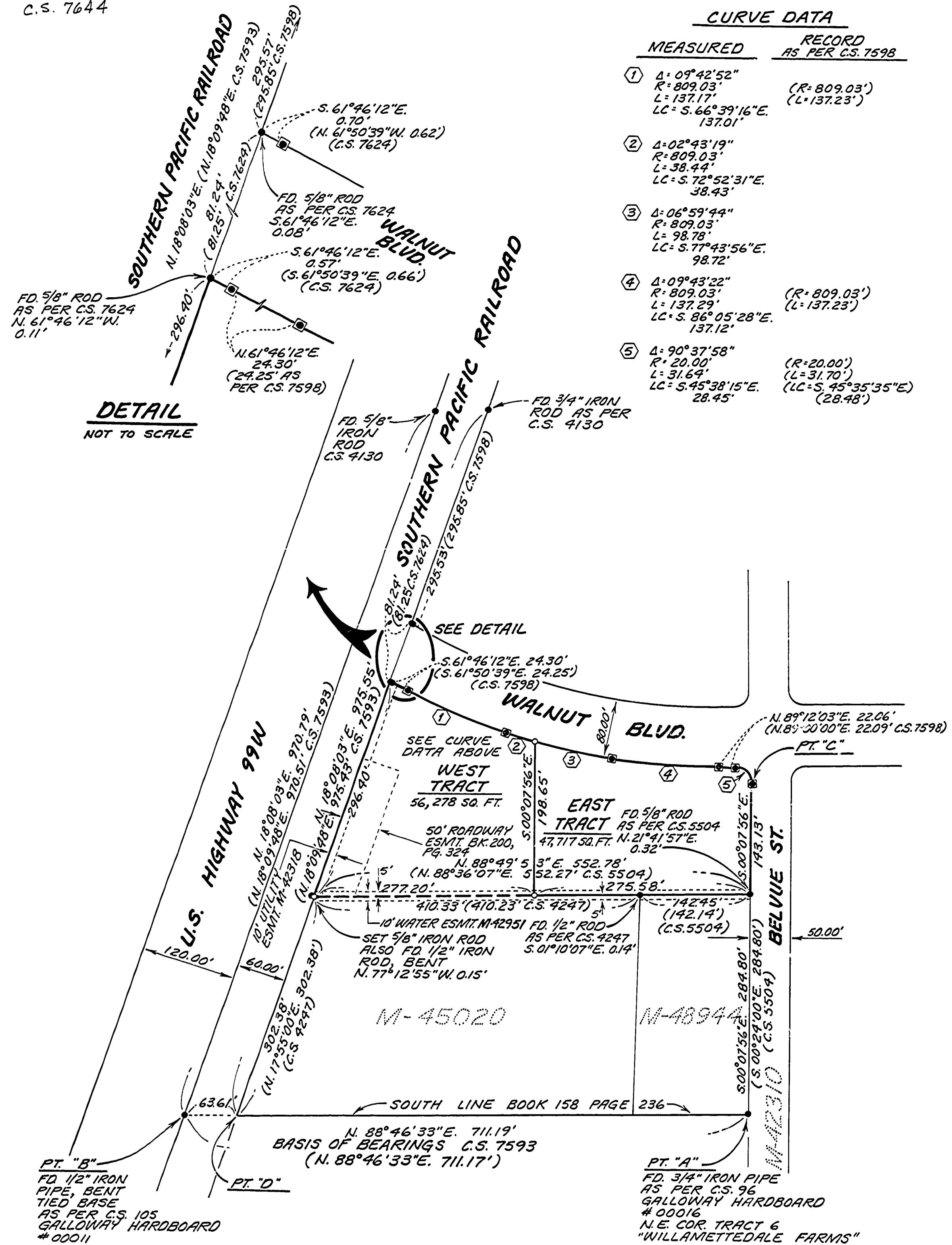


7644

7644

C.S. 7644



**RECORD OF SURVEY/
LOT LINE ADJUSTMENT**
FOR
R.C. WILSON

LOCATED IN THE HEMAN C. LEWIS
D.L.C. NO. 47 IN THE SW 1/4 OF
SECTION 24, T. 11 S., R. 5 W., W.M.
BENTON COUNTY, OREGON
APRIL 26, 1984

NARRATIVE
BASIS OF BEARINGS
THE BASIS OF BEARINGS WAS DETERMINED FROM THE FOUND MONUMENTS AT POINTS "A" AND "B" AS SHOWN.
BOUNDARY DETERMINATION
WEST LINE
THE WEST LINE WAS DETERMINED FROM THE FOUND MONUMENTS ALONG THE RAILROAD RIGHT-OF-WAY AS SHOWN.
EAST LINE
THE EAST LINE WAS DETERMINED BY HOLDING THE 3/4 INCH PIPE AT POINT "A" AND THE 5/8 INCH ROD AT POINT "C".
SOUTH LINE
THE SOUTHWEST CORNER OF THE WEST TRACT WAS DETERMINED AT RECORD DISTANCE ALONG THE EASTERLY RIGHT-OF-WAY LINE OF THE SOUTHERN PACIFIC RAILROAD FROM POINT "D".
THE SOUTHEAST CORNER OF THE EAST TRACT WAS DETERMINED AT RECORD DISTANCE FROM POINT "A".
NORTH LINE
THE NORTH LINE WAS DETERMINED FROM THE FOUND MONUMENTS ALONG THE SOUTHERLY RIGHT-OF-WAY LINE OF WALNUT BLVD. AS SHOWN.

RAYMOND E. WILSON
PAUL GREEN AND ASSOC.
2380 ALU. KINGS BLVD.
CORVALLIS, OR. 97330

PROFESSIONAL
AND SURVEYOR
Raymond E. Wilson
1924

Benton County
Surveyor's Office
C.S. FILE NO. 7644
FILING DATE 4-11-84
FILE SIZE 18" x 24"