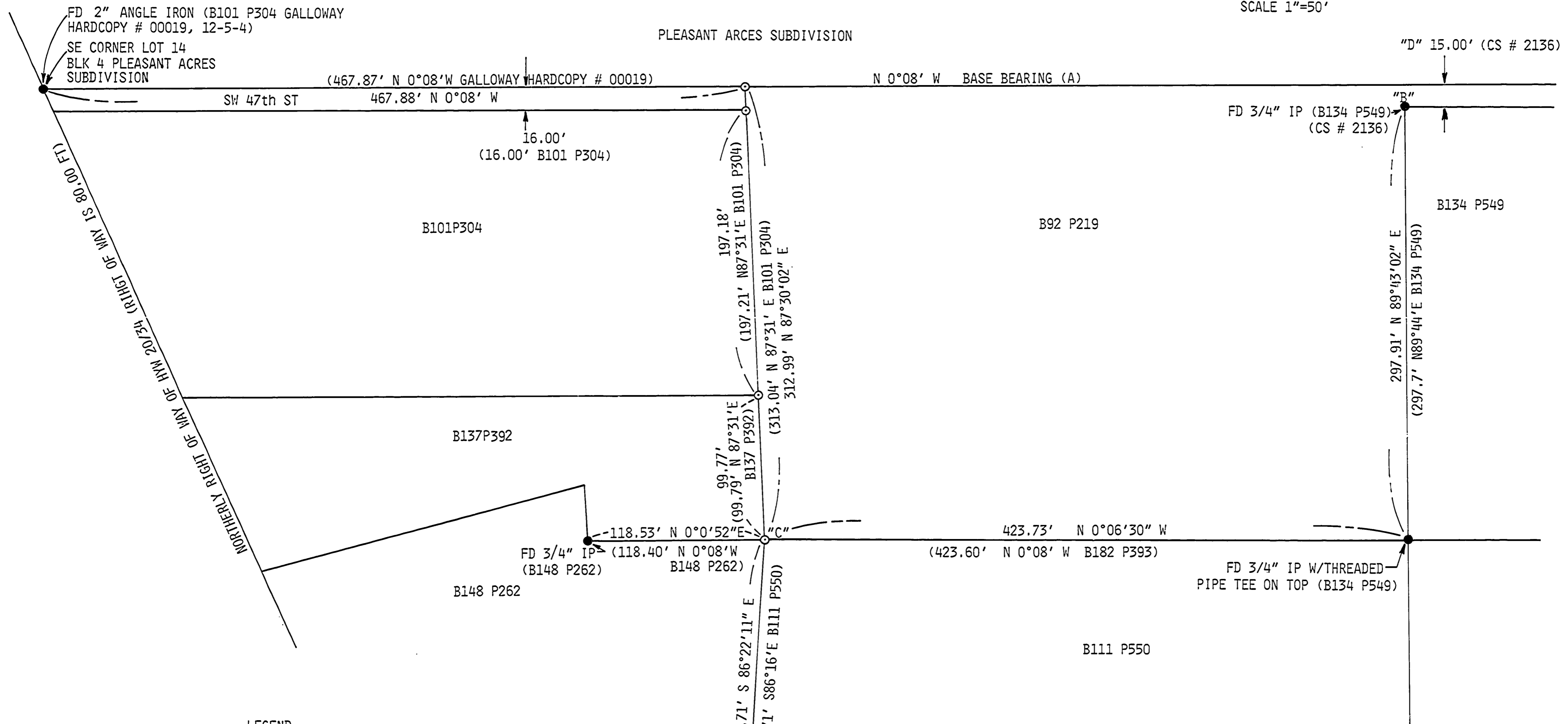
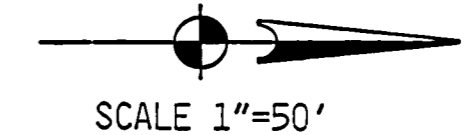


SURVEY FOR CITY OF CORVALLIS
IN
SW 1/4 SECTION 4 T12SR5W.W.M.
AG HOVEY DLC. NO. 43
MONUMENTS SET JUNE 13, 1984

Benton County
Surveyor's Office
C. S. FILE NO. 7649
FILING DATE 6-29-84
FILE SIZE 18" x 24"
R.M.D.



- LEGEND:**
- 5/8" x 30" IRON ROD SET W/YELLOW PLASTIC CAP MARKED "CITY OF CORVALLIS"
 - MONUMENT FOUND
 - IR IRON ROD
 - IP IRON PIPE INSIDE DIAMETER
 - () RECORD DATA
 - FD FOUND

FD 5/8" IR W/YELLOW PLASTIC CAP MARKED "CITY OF CORVALLIS"

CITY OF CORVALLIS
501 SW MADISON
CORVALLIS, OREGON

Walter DeGru
Surveyor

NARRATIVE

THIS SURVEY WAS DONE TO REPLACE MONUMENTS DESTROYED DURING THE CONSTRUCTION OF A SANITARY SEWER LINE. (A) THE BASE BEARING N 0°-08' W IS THE EAST LINE OF THAT PROPERTY DESCRIBED IN B 129 P 631 OF THE BENTON COUNTY DEED RECORDS, CALCULATED FROM THE 2" ANGLE IRON AND 3/4" IP "B" SHOWN. THE 15:00 FT WIDE STRIP "D" WAS OBTAINED FROM THE DIFFERENCE IN THE NORTH LINES OF THE PROPERTIES DESCRIBED IN B 134 P 549 AND B 92 P 219. POINT (C) WAS ESTABLISHED BY PROPORTIONING RECORD DISTANCES FROM FOUND MONUMENTS FROM THE NORTH, SOUTH, AND EAST.