

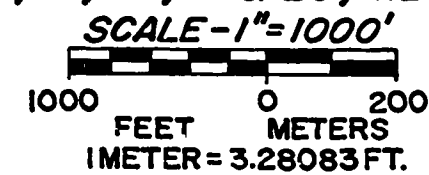
U.S. FOREST SERVICE

CHINTIMINI PARK CADASTRAL SURVEY

SIUSLAW NATIONAL FOREST Contract No. 53-04TO-3-0849N

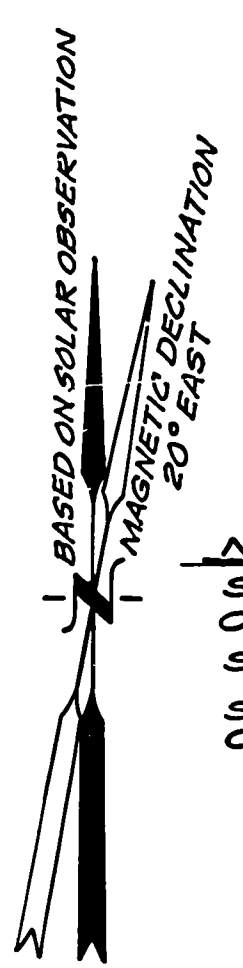
SECTIONS 17, 19, 20, 21 & 29, T.12S., R.7W., W.M., BENTON COUNTY, OREGON
NOV. 1, 1983

Benton County
Surveyor's Office
C.S. FILE NO. 7688
FILING DATE: 10-24-84
SHEET 18" X 24" - 5 RGS.
R.M.D.

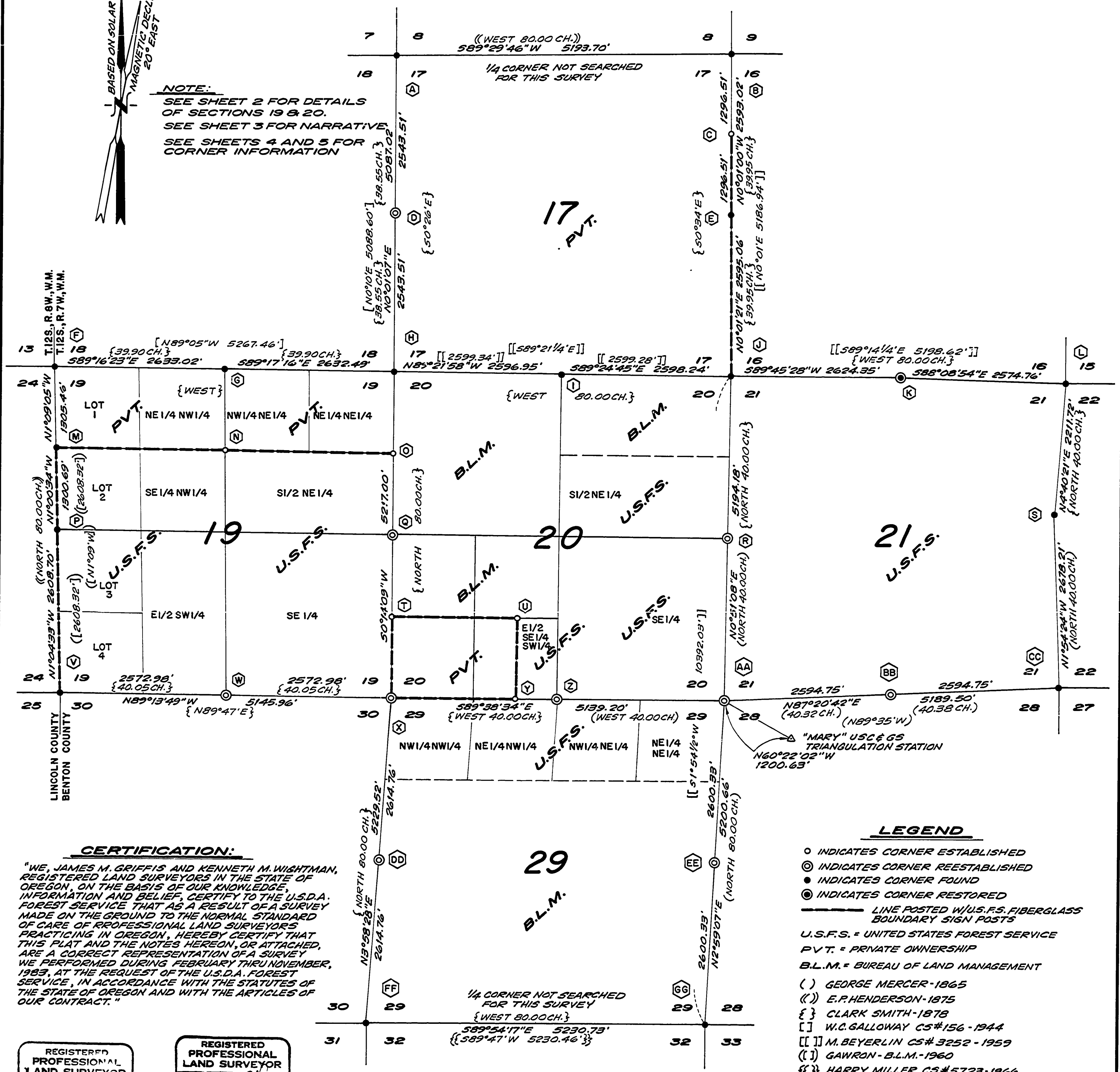


SEE FIELD BOOKS NO'S. 1 THRU 23

Pg. 1 of 5
7688



NOTE:
SEE SHEET 2 FOR DETAILS OF SECTIONS 19 & 20.
SEE SHEET 3 FOR NARRATIVE.
SEE SHEETS 4 AND 5 FOR CORNER INFORMATION



CERTIFICATION:
"WE, JAMES M. GRIFFIS AND KENNETH M. WIGHTMAN, REGISTERED LAND SURVEYORS IN THE STATE OF OREGON, ON THE BASIS OF OUR KNOWLEDGE, INFORMATION AND BELIEF, CERTIFY TO THE U.S.D.A. FOREST SERVICE THAT AS A RESULT OF A SURVEY MADE ON THE GROUND TO THE NORMAL STANDARD OF CARE OF PROFESSIONAL LAND SURVEYORS PRACTICING IN OREGON, HEREBY CERTIFY THAT THIS PLAT AND THE NOTES HEREON, OR ATTACHED, ARE A CORRECT REPRESENTATION OF A SURVEY WE PERFORMED DURING FEBRUARY THRU NOVEMBER, 1983 AT THE REQUEST OF THE U.S.D.A. FOREST SERVICE, IN ACCORDANCE WITH THE STATUTES OF THE STATE OF OREGON AND WITH THE ARTICLES OF OUR CONTRACT."

REGISTERED PROFESSIONAL LAND SURVEYOR
James M. Griffis
OREGON
KENNETH M. WIGHTMAN II
942

REGISTERED PROFESSIONAL LAND SURVEYOR
Kenneth M. Wightman
OREGON
JAMES M. GRIFFIS
1637

- LEGEND**
- INDICATES CORNER ESTABLISHED
 - ⊙ INDICATES CORNER REESTABLISHED
 - INDICATES CORNER FOUND
 - ⊕ INDICATES CORNER RESTORED
 - LINE POSTED W/ U.S.F.S. FIBERGLASS BOUNDARY SIGN POSTS
 - U.S.F.S. = UNITED STATES FOREST SERVICE
 - P.V.T. = PRIVATE OWNERSHIP
 - B.L.M. = BUREAU OF LAND MANAGEMENT
 - () GEORGE MERCER - 1865
 - (¹) E.P. HENDERSON - 1875
 - { } CLARK SMITH - 1878
 - [] W.C. GALLOWAY CS# 156 - 1944
 - [] M. BEYERLIN CS# 3252 - 1959
 - (¹) GAWRON - B.L.M. - 1960
 - { } HARRY MILLER CS# 5723 - 1966
 - ALL PIPE SIZES INDICATED ARE INSIDE DIAMETER

PREPARED BY:
TIMBERLAND - McCULLOUGH, INC.
1010 AIRPORT ROAD S.E. - P.O. BOX 668
ALBANY, OREGON 97321 PH. 926-9404

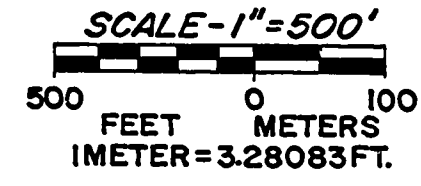
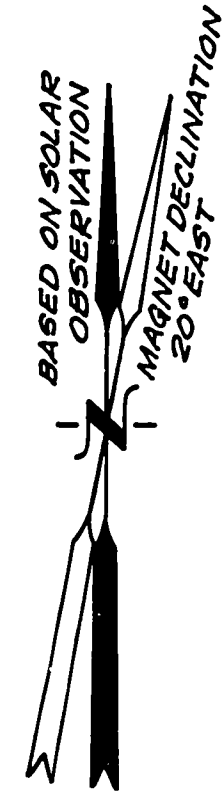
Pg. 1 of 5
7688

7688 Pg 2 OF 5

Pg 2 OF 5 7688

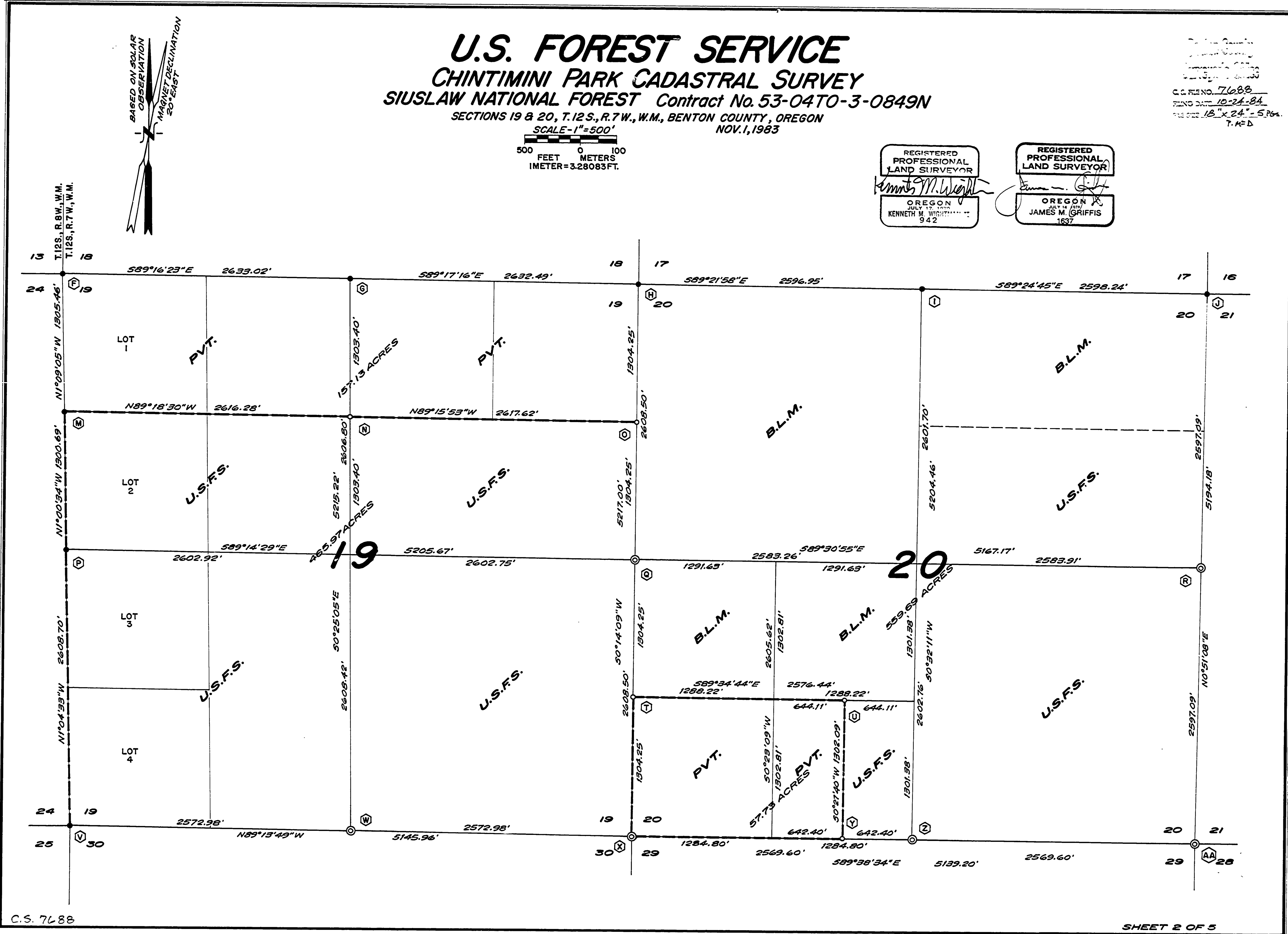
U.S. FOREST SERVICE
CHINTIMINI PARK CADASTRAL SURVEY
SIUSLAW NATIONAL FOREST Contract No. 53-04T0-3-0849N
 SECTIONS 19 & 20, T.12S., R.7W., W.M., BENTON COUNTY, OREGON
 NOV. 1, 1983

Contract No. 53-04T0-3-0849N
 C.C. FILE NO. 7688
 FILING DATE 10-24-84
 THIS SURVEY 18" x 24" = 5 Pgs.
 T.M.D.



REGISTERED PROFESSIONAL LAND SURVEYOR
 OREGON
 JULY 27, 1982
 KENNETH M. WRIGHT
 942

REGISTERED PROFESSIONAL LAND SURVEYOR
 OREGON
 JULY 27, 1982
 JAMES M. GRIFFIS
 1637



7688 Pg 3
OF
5

Pg 3
OF
5 7688

NARRATIVE

THE PURPOSE OF THIS SURVEY IS TO MARK THE BOUNDARY BETWEEN THE GOVERNMENT AND PRIVATE OWNERSHIP IN SECTIONS 17, 19, AND 20 OF TOWNSHIP 12 SOUTH, RANGE 7 WEST.

A PORTION OF THE CORNERS WERE SET BY GEORGE MERCER UNDER CONTRACT No. 112 IN AUGUST OF 1865. E.P. HENDERSON SUBDIVIDED THE NORTHEAST PORTION OF THE TOWNSHIP IN 1875 OPERATING UNDER CONTRACT No. 217.

THE REMAINING UNSURVEYED PORTION OF THE TOWNSHIP WAS COMPLETED BY CLARK SMITH IN DECEMBER OF 1878 OPERATING UNDER CONTRACT No. 307.

WE WERE ABLE TO RESTORE 1/4 CORNER 16 BASED UPON A PATTERN OF WINDTHROWS OF WHICH WE FOUND OLD AXE MARKS ON ONE.

AFTER DILIGENT SEARCH AT ALL PROBABLE POSITIONS, WE WERE NOT ABLE TO RECOVER ANY MORE CORNERS.

IN ALL AREAS EXCEPT 1/4 21 AND 18/17, THE TIMBER IS MUCH TOO YOUNG. OBVIOUSLY A FIRE (OR FIRES) HAS SWEEPED THROUGH THE AREA AND COMPLETELY ERADICATED ANY EVIDENCE. IN DEVELOPMENT OF OUR PROPORTIONED POSITIONS, THE TOPOGRAPHY CALLS WERE STILL REASONABLE WITH THE RECORD.

AS THE RECORD AT THE BENTON COUNTY SURVEYOR'S OFFICE INDICATES, W.C. GALLOWAY SEARCHED FOR SOME OF THE SAME CORNERS IN 1944 (AS INDICATED ON CS #156). MANY OF THE AREAS HAD CHOPPED OUT TREES INDICATIVE OF THE SEARCH EFFORT ASSOCIATED WITH CS #156.

WE ALSO FOUND EVIDENCE NEAR 18/17 THAT DATED BACK TO 1910, WHICH BY THE FOREST COVER MAP IS THE ORIGIN DATE OF THAT PARTICULAR STAND. I CONCLUDED THAT PEOPLE WERE LOOKING FOR THIS PARTICULAR SECTION CORNER AS EARLY AS 1910.

I ALSO WISH IT DOCUMENTED BY THIS RECORD THAT I TALKED WITH NEIL PHILLIPS, SIUSLAW NATIONAL FOREST CORNER SEARCH SPECIALIST, IN REGARD TO HIS FINDINGS AND THOUGHTS CONCERNING CLARK SMITH, GEORGE MERCER AND THE GROUND THEY COVERED IN THIS PARTICULAR TOWNSHIP. NEIL, ALSO, WAS UNABLE TO PRODUCE ANY SOLID EVIDENCE OF CORNERS OTHER THAN 1/4 CORNER 16.

IN 1959 MARTIN BEYERLIN, IN PERFORMANCE OF CS #3252, SEARCHED FOR A NUMBER OF CORNERS OF CONCERN TO US AND HE, LIKEWISE, WAS UNSUCCESSFUL IN PRODUCING ANY EVIDENCE. (WE DEVELOPED OUR OWN SEARCH POSITIONS AND UPON VISITING THESE AREAS, IT WAS OBVIOUS THAT BEYERLIN HAD SEARCHED THOSE AREAS AS WELL.)

C.S. 7688

U.S. FOREST SERVICE
CHINTIMINI PARK CADASTRAL SURVEY
SIUSLAW NATIONAL FOREST Contract No. 53-04TO-3-0849N
SECTIONS 17, 19, 20, 21 & 29, T.12S., R.7W., W.M., BENTON COUNTY, OREGON
NOV. 1, 1983

CLARK SMITH'S 1/4 CORNERS WERE REESTABLISHED AT MIDPOINT; AND AS A CONFLICT EXISTED WITH MERCER'S NOTES AND PLAT, THE RULE IS THAT THE PLAT HOLDS AND 1/4 21 WAS PLACED AT MIDPOINT.

HAVING IN ESSENCE TWO RECORD DISTANCES FOR THE AREA TO RE-ESTABLISH CORNERS IN (GEORGE MERCER & CLARK SMITH) WE FELT IT PRUDENT, IN LIGHT OF THE FACTS AND HISTORY, TO GAIN AN OPINION FROM THE BLM. I HEREWITH AM INCORPORATING THEIR RESPONSE FOR THE RECORD.



United States Department of the Interior 9641.5 (942)

BUREAU OF LAND MANAGEMENT
OFFICE OF THE CHIEF
1960 WASHINGTON, D.C. 20250
BENTON COUNTY, OREGON

October 3, 1983

Mr. James M. Griffis
Timberland-McCullough, Inc.
P. O. Box 668
Albany, Oregon 97321

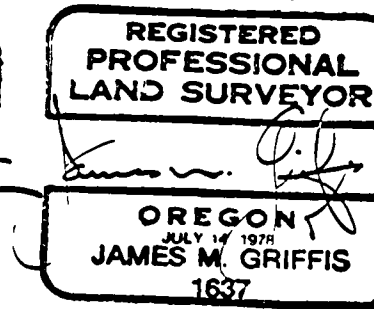
Dear Mr. Griffis:

In response to your letter of September 23, 1983, a review of the survey history for the area in question in T. 12 S., R. 7 W., Willamette Meridian, Oregon, might be useful to verify that we have the facts straight. Your color coded diagram of the Government Land Office surveys is correct except that Smith, not Mercer, surveyed the east one-half mile between sections 29 and 32, and Henderson, not Smith, surveyed the line between sections 7 and 8. With regard to private surveys, we understand from your letter and accompanying data, that Galloway reestablished the corner of sections 17, 18, 19, and 20 at Smith's record cardinal distances south from the corner of sections 7, 8, 17, and 18, and east from the corner of sections 13, 18, 19, and 24. In 1959, Martin Beyerlein used Galloway's section corner to reestablish the corner of sections 16, 17, 20, and 21 by double proportionate measurement and, in turn, the 1/4 section corners of sections 16 and 17, and 17 and 20.

Common proper procedure would dictate that Galloway should have re-established the corner of sections 17, 18, 19, and 20 by double proportionate measurement between the nearest found corners north, south, east, and west. We also note that he apparently reestablished the 1/4 section corner of sections 18 and 19 at midpoint on the section line. This corner should have been reestablished by single proportionate measurement based on Smith's record. The corners reestablished by Beyerlein are not in their proper positions because they were based, in part, on Galloway's improperly reestablished section corner.

You ask if it is correct procedure to double proportion between Mercer's and Henderson's corners using a combination of Mercer's and Smith's records. The answer is yes. Original corners or properly reestablished corners control for proportions regardless of who set them. Combining records is inevitable since collectively they are the one and only official record.

However, the normal double proportionate measurement procedure might be modified depending on the particular records involved. Section 5-36 of the Manual of Surveying Instructions, 1972, prescribes a method of "irregular" boundary adjustment. While this procedure is normally used for restoration of corners on township boundaries or lines "shown to be irregular by a previous retracement" the same principle applies for interior section lines completed in parts by different surveyors. Technically, this method is used in a double proportionate restoration for latitudinal position on meridional lines and/or position in departure on latitudinal lines when the overall record between controlling corners includes returns of more than one surveyor. The net effect is a proportionate adjustment of the latitude or departure of a course based on the ratio of the latitude or departure of the closing distance, to the total latitude or departure between found corners. For example, the east-west position of the corner of sections 16, 17, 20, and 21 would be proportioned in the usual manner, since the record is all Smith's, while the north-south position could be reestablished by the method of irregular boundaries since it combines Mercer's and Smith's records. Other double proportionate restorations might involve irregular boundary adjustments in either latitude, departure, or both if more than one surveyor's records are involved.



Contract 7688
Range 7
T. 12 S. R. 7 W. W.M.
Benton County, Oregon
P.M.S.

In the present case, lost corners restored according to prescribed methods will probably differ in position from those established by Galloway and Beyerlein. However, the existing corners should not be rejected based solely on the procedures that were used. There are other factors to consider such as longevity and acceptance by adjacent landowners. Only after all the relevant factors and evidence are analyzed can a logical decision by a prudent surveyor be made.

We hope this information is helpful to you.

Sincerely,

William M. Glenn

William M. Glenn
Chief, Office of Cadastral Survey

MUCH DISCUSSION EVOLVED BETWEEN US, THE USFS AND THE BLM. THE BLM ADMITTED THAT IF THEY WERE CONDUCTING THE SURVEY, THE MONUMENTS, WHILE NOT NECESSARILY PLACED CORRECTLY, MAY BE ACCEPTED AS WHAT WAS TERMED "A LOCAL POINT OF CONTROL".

ANOTHER CONSIDERATION GIVEN TO THIS DECISION WAS, WHERE ARE EXISTING CORNERS IN RELATION TO CALCULATED DOUBLE PROPORTIONATE POSITIONS? AT SECTION CORNER 18/17, GALLOWAY'S PIPE FALLS 19/20 ROUGHLY SOUTHEASTERLY 56 FEET, AND AT BEYERLIN FOR 17/16 A 20/21 PROPORTIONED POSITION WOULD FALL WITHIN SIX FEET OF HIS EXISTING PIPE.

AFTER CONSIDERABLE DISCUSSION WITH BOTH GENE THOMPSON AND THE U.S. FOREST SERVICE CONCERNING RAMIFICATIONS OF ONE DECISION VERSUS THE OTHER, WE OPTED TO HOLD THOSE MONUMENTS FROM BOTH CS #156 AND #3252. OUR THINKING HERE WAS THAT GALLOWAY WAS ACTING IN HIS OFFICIAL CAPACITY AS BENTON COUNTY SURVEYOR ACCORDING TO ORS, WHICH PRESERVES THE DUTIES OF THE COUNTY SURVEYOR WITH RESPECT TO THE GOVERNMENT CORNER. PROPORTIONED POSITIONS WERE THEN CALCULATED ACCORDING TO THE BLM MANUAL OF INSTRUCTION AND CORNERS WERE REESTABLISHED OR ESTABLISHED AS DEPICTED ON THIS RECORD OF SURVEY.

OUR BASIS OF BEARING WAS BY SOLAR OBSERVATION NEAR SECTION CORNER 16/15. THE CONTROL SURVEY WAS RUN WITH AN HP 3820A 21/22

TOTAL STATION. ALL POSTED LINE TRAVERSE WAS RUN WITH A WILD T-16 AND WILD DI 4 EDM.

CAPS SET ARE 3 1/2" x 30" ALUMINUM CAPS WITH MAGNETS AND EITHER FLARED BOTTOM OR BREAK AWAY BASE.

7688 PG 4 OF 5

PG 4 OF 5 7688

NARRATIVE (CON'T. FROM SHEET 3)

ALL BEARING TREES AT CORNERS ESTABLISHED, RE-ESTABLISHED, OR RESTORED BY THIS SURVEY ARE BANNED WITH RED PAINT, HAVE BEARING TREE TAGS FACING THE CORNER AND A U.S.F.S. ATTENTION SIGN OR LAND SURVEY MONUMENT SIGN NAILED TO THE BACK. NEW BEARING TREES OR OLD BEARING TREES REMARKED HAVE BRASS WASHERS STAMPED WITH THE PROFESSIONAL LAND SURVEYOR'S NUMBER SHOWN ON THE CAPS AND ARE NAILED TO THE LOWER BLAZE. MEASUREMENTS TO BEARING TREES ARE TO AN ALUMINUM NAIL DRIVEN PERPENDICULAR TO THE CENTER OF THE TREE APPROXIMATELY ONE FOOT ABOVE THE ROOT COLLAR. REFERENCE BEARINGS TO THE BEARING TREES ARE DETERMINED WITH A HAND COMPASS MEASURED IN BOTH DIRECTIONS WITH A DECLINATION AS SHOWN ON THE FACE OF THIS PLAT.

AS A POINT OF INTEREST IN REGARDS TO THIS SURVEY, I HAVE THE FOLLOWING TO REPORT. SINCE OUR SURVEY WAS COMPLETED (FIELD WORK), ADDITIONAL SEARCH HAS BEEN DONE TO VERIFY THAT THOSE CORNERS IN QUESTION ARE TRUTHFULLY LOST. THE STATE OF OREGON, FORESTRY DEPARTMENT, PHILOMATH OFFICE, HAVING AN INTEREST IN SECTION 18 HAS EXPENDED TIME, AS WELL AS ADDITIONAL "ONE MORE TIME" SEARCHES BY BOTH OURSELVES AND THE USFS (TO NO AVAIL!).

U.S. FOREST SERVICE
CHINTIMINI PARK CADASTRAL SURVEY
SIUSLAW NATIONAL FOREST Contract No. 53-0470-3-0849N
SECTIONS 17, 19, 20, 21 & 29, T.12S., R.7W., W.M., BENTON COUNTY, OREGON
NOV. 1, 1983

Section 17
Section 19
Section 20
Section 21
Section 29
Contract 7688
T.12S. R.7W. W.M.
18"x24" - 5 Pos.
P. 748.

A SEC. COR. 7/8 18/17

FOUND: 3/4" ALUMINUM CAP MARKED:
T12S R7W
S17 S18
S18 S17
1982
RPLS 1922
FROM WHICH: 32" FIR STUMP N 5°E 112.8'
(VISIBLE BLAZE)
32" FIR STUMP S 17 1/2°E 66.7'
(NO MARKS)
32" FIR STUMP S 65°W 65.4'
(VISIBLE FACE)
48" FIR STUMP N 18 1/2°W 134.7'
(VISIBLE FACE)
5" FIR N 19°W 46.0'
(NO MARKS)
10" FIR N 19°E 46.6' (SCRIBING VISIBLE)
9" FIR S 54°W 17.0' (SCRIBING VISIBLE)
11" FIR S 45°E 11.9' (SCRIBING VISIBLE)

B SEC. COR. 8/9 17/16

FOUND: 2 5/8" BRASSCAP MARKED:
T12S R7W
S8 S9
S17 S16
1973
PE 7097
FROM WHICH: 32" FIR STUMP N 62°E 20.1'
11" FIR N 44°E 49.6'
(NO MARKS)
30" FIR STUMP N 6°W 36.5'
20" HEMLOCK N 34°W 17.4'
(SCRIBING VISIBLE)
14" HEMLOCK S 42°W 21.7'
(SCRIBING VISIBLE)
42" FIR STUMP S 16°W 39.9'
38" FIR STUMP S 20°E 21.2'
10" FIR S 40°E 19.3' (HEALED FACE)

C N 1/16 SEC. COR. 17/16

SET: 3/4" ALUMINUM CAP MARKED:
T12S R7W
N 1/16
S17 S16
1983
RPLS 1637"
MARKED: 8" D. FIR N 48°E 13.4'
"N 1/16 S16" "BT"
7" D. FIR N 69°W 5.1'
"N 1/16 S17" "BT"

REGISTERED PROFESSIONAL LAND SURVEYOR
Kenneth M. Wightman II
OREGON JULY 17, 1978
KENNETH M. WIGHTMAN II
942

F SEC. COR. 13/18 24/19

FOUND: 2 1/2" BLM BRASSCAP MARKED:
T12S
R8W R7W
S24 S19
1959
(STONE 12"x10"x10" ALONGSIDE WEST EDGE OF CAP, 3/4" G.I.P. 0.3' EAST)
FROM WHICH: 68" D. FIR STUMP S 68°E 29.6'
(HEALED FACE)
38" D. FIR SNAG S 25°E 14.9'
(NO MARKS)
32" D. FIR (S 42 1/2°W 153.8')
(HEALED FACE)
42" D. FIR N 89°W 69.6'
(HEALED FACE)
49" D. FIR STUMP N 15°E 60.5'
(HEALED "BT" FACE - BARK SCRIBING ABOVE)
58" D. FIR STUMP N 51°E 62.4'
(NO MARKS)
60" D. FIR SNAG S 80°W 15.2' (TO FACE)
(NO MARKS)

G 1/4 SEC. COR. 18 19

FOUND: 3/4" Iron Pipe (CS #156)
SET: 3/4" ALUMINUM CAP IN PLACE OF PIPE MARKED:
T12S R7W 1/4 S18 1983 RPLS 1637"
S19
FROM WHICH: 40" CEDAR STUMP S 15°E 25.2'
(NO MARKS OR FACE VISIBLE)
(WAS CALLED 26" HEMLOCK IN CS #156)
24" HEMLOCK STUMP N 54°W 28.1'
(BADLY ROTTED)
MARKED: 14" ALDER N 28°W 36.6'
"1/4 S18" "BT" (BARK SCRIBED)
13" HEMLOCK S 23°W 48.2'
"1/4 S19" "BT"

D 1/4 SEC. COR. 18/17 19/20

SET: 3/4" ALUMINUM CAP MARKED:
T12S R7W
1/4 S18 S17
1983
RPLS 1637"
FROM WHICH: 116" FIR STUMP S 72°W [99.7']
(NO EVIDENCE OF SPIKE OR SCRIBING)
36" FIR STUMP S 26°W [20.9']
(FACE VISIBLE)
HEMLOCK & FIR TO N.E. GONE
MARKED: 8" D. FIR N 20°E 41.0'
"1/4 S17" "BT"
12" D. FIR N 47°W 73.7'
"1/4 S18" "BT"

E 1/4 SEC. COR. 17/16

FOUND: 3/4" I.P. (CS #3252)
SET: 3/4" ALUMINUM CAP IN PLACE OF PIPE MARKED:
T12S R7W 1/4 S17 S16 1983 RPLS 1637"
FROM WHICH: 36" FIR STUMP S 66°W 12.6'
(SCRIBING VISIBLE)
FIR WINDTHROW AT S 85°E
MARKED: 11" HEMLOCK N 53°E 33.2'
"1/4 S16" "BT"
7" ALDER N 77°W 7.4'
"1/4 S17" "BT"

H SEC. COR. 18/17 19/20

FOUND: 1 1/2" x 24" Iron Pipe (CS #156-1944)
SET: 3/4" ALUMINUM CAP MARKED:
T12S R7W
S18 S17
S19 S20
1983
RPLS 1637"
FROM WHICH: 18" D. FIR S 70°E 38.9'
(HEALED FACE)
18" ALDER S 68°E 24.3'
"CS 156" VISIBLE IN BARK
32" D. FIR S 38°W 43.0'
WITH HEALED FACE IN ROOT CROWN
"CS 156" VISIBLE IN BARK ABOVE
20" HEMLOCK N 87 1/2°W 14.6'
CRUISER'S MARK & POSSIBLE BARK SCRIBING
34" D. FIR N 13°E 69.6'
(HEALED FACE)
MARKED: 14" D. FIR N 39°E 61.3'
"T12S R7W S17" "BT"

I 1/4 SEC. COR. 17 20

FOUND: "X" ON BOULDER CS #3252
FROM WHICH: 3/4" I.P. FOR R.M. 0.6' SOUTH
10" ALDER N 52°W 9.2'
(SCRIBING VISIBLE)
19" ALDER S 73°W 8.1'
(SCRIBING VISIBLE)
34" D. FIR S 36°E 31.9'
(HEALED FACE)
15" D. FIR N 26°E 34.4'
(HEALED FACE)
SET: 3/4" ALUMINUM CAP FOR R.M. MARKED:
S17
S20 RM
"1/4 S20 RM
N89°48'W 32.3'
1983
LS 1637"

J SEC. COR. 17/16 20/21

FOUND: 1" IRON PIPE (CS #3252)
SET: 3/4" ALUMINUM CAP IN PLACE OF PIPE MARKED:
T12S R7W (IRON PIPE BURIED IN HOLE)
S17 S16
S20 S21
1983
RPLS 1637"
FROM WHICH: 10" FIR SNAG N 52°W 7.7'
(SCRIBING VISIBLE)
15" D. FIR N 26°E 4.0'
(HEALED FACE)
13" D. FIR S 64°E 7.4'
(HEALED FACE)
15" D. FIR S 16°W 21.7'
(HEALED FACE)
MARKED: 19" D. FIR N 71°W 11.8'
"T12S R7W S17" "BT"

K 1/4 SEC. COR. 16 21

FOUND: WINDTHROWN TREE (DOWNHILL & EASTERLY ±15 FEET)
24" D. FIR (NO SCRIBING)
(OLD AXE MARKS AND AREA OF FLATTENED BARK)
SET: 3/4" ALUMINUM CAP MARKED:
T12S R7W
1/4 S16
S21
1983
RPLS 1637"
FROM WHICH: FOUND WINDTHROWN BT
40" D. FIR WINDFALL N 6.6' TO ROOT HOLE
(NO DISTINGUISHING MARKS)
18" D. FIR STUMP S 26.4'
(NO MARKS)
MARKED: 5" D. FIR N 19°E 24.6'
"1/4 S16" "BT"
5" D. FIR S 68°E 10.3'
"1/4 S21" "BT"

L SEC. COR. 16/15 21/22

FOUND: 3/4" ALUMINUM CAP MARKED:
T12S R7W
S16 S15
S21 S22
1976
FROM WHICH: 6" VINE MAPLE (DEAD) S 23°W 5.3'
(AXE MARKS)
6" VINE MAPLE S 12°E 6.6'
(SCRIBING VISIBLE)
36" D. FIR STUMP N 8°E 14.5'
(AXE MARKS)
30" D. FIR STUMP N 27°E 139.0'
(SCRIBING VISIBLE)
C. SMITH'S NW FIR IS ROOTED OVER STUMP WITH BT TAG
L. HUNNEMULLER'S 65" NE FIR IS GONE

M N 1/16 SEC. COR. 24/19

FOUND: 2 1/2" BLM BRASSCAP MARKED:
T12S
R8W R7W
N 1/16
S24 S19
1959
FROM WHICH: 55" D. FIR S 32°E 88.8'
40" D. FIR STUMP N 39°W 18.4'
8" D. FIR N 44°E 7.0'
8" D. FIR N 66°W 5.2'

N CN 1/16 SECTION 19

SET: 3/4" ALUMINUM CAP MARKED:
T12S R7W
C
N 1/16 S19
1983
RPLS 1637"
MARKED: 16" D. FIR N 30°W 15.8'
"CN 1/16 S19" "BT"
26" D. FIR S 73°W 45.2'
"CN 1/16 S19" "BT"

O N 1/16 SEC. COR. 19/20

SET: 3/4" ALUMINUM CAP MARKED:
T12S R7W
N 1/16
S19 S20
1983
LS 1637"
MARKED: 20" D. FIR N 43°W 18.2'
"N 1/16 S19" "BT"
24" D. FIR N 68°E 30.5'
"N 1/16 S20" "BT"

P 1/4 SEC. COR. 24/19

FOUND: 2 1/2" BLM BRASSCAP MARKED:
T12S
R8W R7W
1/4
S24 S19
1959
FROM WHICH: 20" D. FIR SNAG N 5°E 18.0'
(SCRIBING VISIBLE)
24" HEMLOCK N 77°W 44.4'
(HEALED FACE)
MARKED: 30" D. FIR N 46°E 59.4'
"1/4 S19 BT"

7688 PG. 5 OF 5

PG 5 OF 5 7688

U.S. FOREST SERVICE
CHINTIMINI PARK CADASTRAL SURVEY
SIUSLAW NATIONAL FOREST Contract No. 53-0470-3-0849N
SECTIONS 17, 19, 20, 21 & 29, T.12S., R.7W., W.M., BENTON COUNTY, OREGON
NOV. 1, 1983

7688
NOV 10 1984
18" x 24" - 5 Pgs.
P. 48D.

ⓐ 1/4 SEC. COR. 19|20
SET: 3/4" ALUMINUM CAP MARKED:
"T12S R7W
1/4
S19|S20
1983
LS 1637"
MARKED: 24" D. FIR S 20°W 48.1'
"1/4 S19" "BT"
14" Hemlock S 46°E 28.9'
"1/4 S20" "BT"

ⓑ SEC. COR. 24|19
25|30
FOUND: 2 1/2" BLM BRASSCAP MARKED:
T12S
R8W R7W
S24|S19
S25|S30
1959
FROM WHICH: 24" D. FIR STUMP S 53°E 13.6'
DECAYED FIR STUMP N 60°E 11.9'
19" HEMLOCK S 25°W 51.4'
30" HEMLOCK S 87°E 9.2'
20" HEMLOCK N 46°E 13.7'
26" HEMLOCK N 15°W 50.6'

Ⓒ 1/4 SEC. COR. 20
29
SET: 3/4" ALUMINUM CAP MARKED:
"T12S R7W
1/4
S20|S29
1983
RPLS 1637"
SET: 3/4" ALUMINUM CAP FOR REFERENCE MONUMENT
N 40°W 32.9' MARKED:
"1/4 S20 RM 1983 RPLS 1637"
3/4" ALUMINUM CAP FOR REFERENCE MONUMENT
S 48°W 33.7' MARKED:
"1/4 S29 RM 1983 RPLS 1637"

Ⓓ 1/4 SEC. COR. 30|29
SET: 3/4" ALUMINUM CAP MARKED:
"T12S R7W
1/4
S30|S29
1983
RPLS 1637"
MARKED: 14" D. FIR WEST 40.3'
"1/4 S30" "BT"
24" D. FIR S 6°E 43.0'
"1/4 S29" "BT"

ⓓ 1/4 SEC. COR. 20|21
SET: 3/4" ALUMINUM CAP MARKED:
"T12S R7W
1/4
S20|S21
1983
RPLS 1637"
MARKED: 29" NOBLE FIR N 80°E 36.9'
"1/4 S21" "BT"
56" NOBLE FIR S 48°W 23.0'
"1/4 S20" "BT"

ⓔ 1/4 SEC. COR. 19
30
SET: 3/4" ALUMINUM CAP MARKED:
"T12S R7W
1/4
S19
S30
1983 RPLS 1637"
MARKED: 15" D. FIR N 57°E 28.0'
"1/4 S 19" "BT"
24" D. FIR S 55°E 9.8'
"1/4 S30" "BT"

ⓕ SEC. COR. 20|21
29|28
SET: 3/4" ALUMINUM CAP MARKED:
"T12S R7W
S20|S21
S29|S28
1983
RPLS 1637"
MARKED: 10" NOBLE FIR N 34 1/2°W 55.7'
"T12S R7W S20" "BT"
20" NOBLE FIR N 24°E 154.3'
"T12S R7W S21" "BT"
3/4" ALUMINUM CAP FOR R.M. S 47°E 37.2'
"T12S R7W S28 RM 1983 RPLS 1637"
3/4" ALUMINUM CAP FOR R.M. S 48°W 38.2'
"T12S R7W S29 RM 1983 RPLS 1637"

ⓖ 1/4 SEC. COR. 29|28
SET: 3/4" ALUMINUM CAP MARKED:
"T12S R7W
1/4
S29|S28
1983
RPLS 1637"
MARKED: 13" D. FIR S 85°E 10.4'
"1/4 S28" "BT"
10" D. FIR N 12°W 8.9'
"1/4 S29" "BT"

ⓗ 1/4 SEC. COR. 21|22
FOUND: 3/4" ALUMINUM CAP MARKED:
T12S R7W
1/4
S21|S22
1980
RLS 1050
FROM WHICH: 46" D. FIR S 60°W 5.9'
("BT" VISIBLE IN SAW PLUG)
44" D. FIR N 14°E 22.5'
(HEALED FACE)
51" D. FIR N 76°W 32.7'
(SCRIBING VISIBLE)

ⓘ SEC. COR. 19|20
30|29
SET: 3/4" ALUMINUM CAP MARKED:
"T12S R7W
S19|S20
S30|S29
1983
RPLS 1637"
MARKED: 8" NOBLE FIR N 73°E 17.7'
"T12S R7W S20" "BT"
9" NOBLE FIR S 64°E 26.0'
"T12S R7W S29" "BT"
12" NOBLE FIR S 31°W 28.8'
"T12S R7W S30" "BT"
20" NOBLE FIR N 42°W 25.5'
"T12S R7W S19" "BT"

ⓙ 1/4 SEC. COR. 21
28
SET: 3/4" ALUMINUM CAP MARKED:
"T12S R7W
1/4
S21|S28
1983
LS 1637"
MARKED: 50" NOBLE FIR N 58°E 30.6'
"1/4 S21" "BT"
24" NOBLE FIR S 33°W 37.4'
"1/4 S28" "BT"

ⓚ SEC. COR. 30|29
31|32
FOUND: 3/4" G.I.P., REPLACED WITH
SET: 3/4" ALUMINUM CAP MARKED:
"T12S R7W
S30|S29
S31|S32
1980
RPLS 1637"
FROM WHICH: ROTTEN HEMLOCK STUB N 5 W 12.5'
(NO MARKS)
31" RED CEDAR N 65°E 38.3'
(SCRIBING VISIBLE)
STONE WITH "X" N 12°W 4.45' TO CENTER
37" D. FIR S 35°E 26.5' (HEALED FACE)
39" D. FIR S 28°W 40.0' (HEALED FACE)

ⓛ S 1/16 SEC. COR. 19|20
SET: 3/4" ALUMINUM CAP MARKED:
"T12S R7W
S 1/16
S19|S20
1983
LS 1637"
MARKED: 23" D. FIR S 27°E 38.6'
"S 1/16 S20" "BT"
20" HEMLOCK S 74°W 12.2'
"S 1/16 S19" "BT"

ⓜ E-W-1/64 SEC. COR. 20
29
SET: 3/4" ALUMINUM CAP MARKED:
"T12S R7W
E-W-1/64
S20
S29
1983
RPLS 1637"
SET: 3/4" ALUMINUM CAP FOR REFERENCE MONUMENT
N 45°E 29.4' MARKED:
"E-W 1/64 S20 RM 1983 RPLS 1637"
3/4" ALUMINUM CAP FOR REFERENCE MONUMENT
S 42°E 29.7' MARKED:
"E-W 1/64 S29 RM 1983 RPLS 1637"

ⓞ SEC. COR. 21|22
28|27
FOUND: 3/4" ALUMINUM CAP MARKED:
"T12S R7W
S21|S22
S28|S27
1980
RLS 1050
FROM WHICH: 8" D. FIR S 52°W 34.7'
(SCRIBING VISIBLE)
4" HEMLOCK S 12°E 19.6'
(SCRIBING VISIBLE)
4" D. FIR N 12°W 11.2'
(SCRIBING VISIBLE)
4" D. FIR N 38°E 46.3'
(SCRIBING VISIBLE)
56" WINDTHROW S 5°E 22.4'
ROOT HOLE N 20°E 26.4'

ⓟ SEC. COR. 29|28
32|33
FOUND: 1" G.I.P. WITH PLUMBING CAP- REPLACED WITH
SET: 3/4" ALUMINUM CAP MARKED:
"T12S R7W
S29|S28
S32|S33
1983
RPLS 1637"
FROM WHICH: 18" HEMLOCK STUMP N 58°E 51.7'
(SCRIBING VISIBLE)
47" D. FIR S 48°W 49.9'
(FACE HEALED)
20" D. FIR STUMP S 35°W 22.4' WINDTHROW
(SCRIBING VISIBLE)
18" YEW S 5°E 44.1'
(SCRIBING VISIBLE)
36" D. FIR STUMP S 20°E 38.3'
(OLD FACE - AXE MARKS)
MARKED: 8" D. FIR N 68°E 38.5'
"T12S R7W S28 BT"
13" HEMLOCK N 29°W 23.5'
"T12S R7W S29 BT"

ⓠ C-E-SW 1/64 SECTION 20
SET: 3/4" ALUMINUM CAP MARKED:
"T12S R7W
C-E-SW 1/64
S20
1983
RPLS 1637"
MARKED: 23" D. FIR S 31°E 39.5'
"C-E-SW 1/64 S20" "BT"
31" N. FIR N 64°W 38.6'
"C-E-SW 1/64 S20" "BT"

REGISTERED PROFESSIONAL LAND SURVEYOR
KENNETH M. WIGHTMAN II
942
REGISTERED PROFESSIONAL LAND SURVEYOR
JAMES M. GRIFFIS
1637

T mberlan



McCull u h

November 17, 1983
Mr. Bill Glenn

notes.

I acknowledge that prescribed methods would put both 1/4 corners in a different position (more specifically, 1/4 $\frac{19}{30}$ would be 3.21 feet easterly, and 1/4 $\frac{21}{28}$ would be 1.93 feet

easterly). In light of the fact that I have decided to accept both Galloway's and Beyerlin's monuments (both of whom positioned their respective reestablished 1/4 corners at positions consistent with the field notes), I have chosen to be consistent with the field notes, which are in line with Galloway's and Beyerlin's prior placement of the 1/4 corners.

My question, then: is my methodology and rationale for placement of the two 1/4 corners of concern acceptable or unacceptable?

I appreciate your time and effort on this and former projects. Your expertise proves to be invaluable!!

Sincerely,

TIMBERLAND-McCULLOUGH, INC.


James M. Griffis, PLS

JMG:beb

Enclosures





original

CS 7688

IN REPLY REFER TO

United States Department of the Interior 9641.5 (942)

BUREAU OF LAND MANAGEMENT

OREGON STATE OFFICE
P.O. Box 2965 (825 N.E. Multnomah Street)
Portland, Oregon 97208

November 28, 1983

Mr. James M. Griffis
Timberland-McCullough
P. O. Box 668
Albany, Oregon 97321

Dear Mr. Griffis:

In response to your letter of November 17, 1983, we have reviewed Sheets 1 and 2, showing your resurvey data in T. 12 S., R. 7 W., and compared it with the information you submitted with your letter of September 23, 1983.

To answer your question regarding placement of the $\frac{1}{4}$ section corners of sections 19 and 30, and 21 and 28, if lost, both $\frac{1}{4}$ section corners should be placed at midpoint on the respective section lines. The objective is to restore them where they were placed by the original surveyor. Mercer's field notes show the length of his random line between sections 21 and 28 as 80.75 chains. Returning on true line, he places the $\frac{1}{4}$ section corner at 40.38 chains, a midpoint position. The true line total is recorded as 80.70 chains, and that distance was used on the plat. But, the plat shows the $\frac{1}{4}$ section corner as being at midpoint. The general rule is: "Where a conflict between the plat and field notes exists, the plat controls." That rule is based on the premise that the conflict cannot be resolved. In this case, the distances of 80.75 chains and 40.38 chains clearly indicate that the distance of 80.70 chains is the culprit.

The line between sections 19 and 30 is similar. The field notes clearly show that Smith placed the $\frac{1}{4}$ section corner at midpoint and that is where it must be restored. However, the draftsman technically erred in lotting the section on the plat. If you were to establish the W 1/16 section corner it would be placed at a proportionate position based on the platted distances of 20.00 and 20.10 chains.

It appears that you have already decided to accept the monuments established by Galloway in 1944 for section 18, and those established by Beyerlein in 1959 for section 17. As pointed out in our letter of the 3rd of October, Galloway used "two point control" to establish his corner of sections 17, 18, 19, and 20. That method may have been expedient, but was not the proper procedure. Beyerlein accepted Galloway's survey and double proportioned the corner of sections 16, 17, 20, and 21, using the original corner of sections 15, 16, 21, and 22 for longitudinal control. You have recovered the original $\frac{1}{4}$ section corner of sections 16 and 21, which was overlooked by Beyerlein. Thus, Beyerlein erred on two counts. While all of that is unfortunate it remains the facts.

This office lacks any authority to "approve" or "disapprove" any privately executed surveys or resurveys. The decision to accept Galloway's and Beyerlein's corners is strictly up to you and/or the Forest Service. However, we must point out that Galloway's and Beyerlein's procedures were incorrect. Using the data supplied by you, the Galloway corner of sections 17, 18, 19, and 20 should be located about 60 links north and 60 links west of its present position to be correctly positioned. The Beyerlein corner of sections 16, 17, 20, and 21 should be positioned 7 links east. Although both surveyors made excellent measurements, and the distances from their points to the correct positions are relatively small due to the combination of circumstances, their procedures were incorrect and, therefore, unacceptable to this office. Had they used correct procedures and the positions were the same, their work would be acceptable.

We noted also that Clark Smith called for large bearing trees at the corners of sections 19, 20, 29, and 30; 16, 17, 20, and 21; and 17, 18, 19, and 20. Mercer called for large bearing trees at the $\frac{1}{4}$ section corners of sections 28 and 29; 20 and 29; 21 and 28; and 20 and 21. All of those corners are now shown as lost according to your plat. Comparing the original topography with the quadrangle maps tends to indicate that the original surveys were actually run on the ground, although some "stubbing" may have been done by Smith. He was in there in December of 1878, a time in which the weather is usually abominable in the Coast Range, so he may have been "running on the needle," instead of using the solar attachment. These are factors to consider in your corner search. It seems as though some evidence could still remain of those large bearing trees, if the search area can be narrowed down using the topography.

We hope this answers your questions. If not, please contact this office again.

Sincerely,

William W. Glenn

William W. Glenn
Chief, Branch of Cadastral Survey

