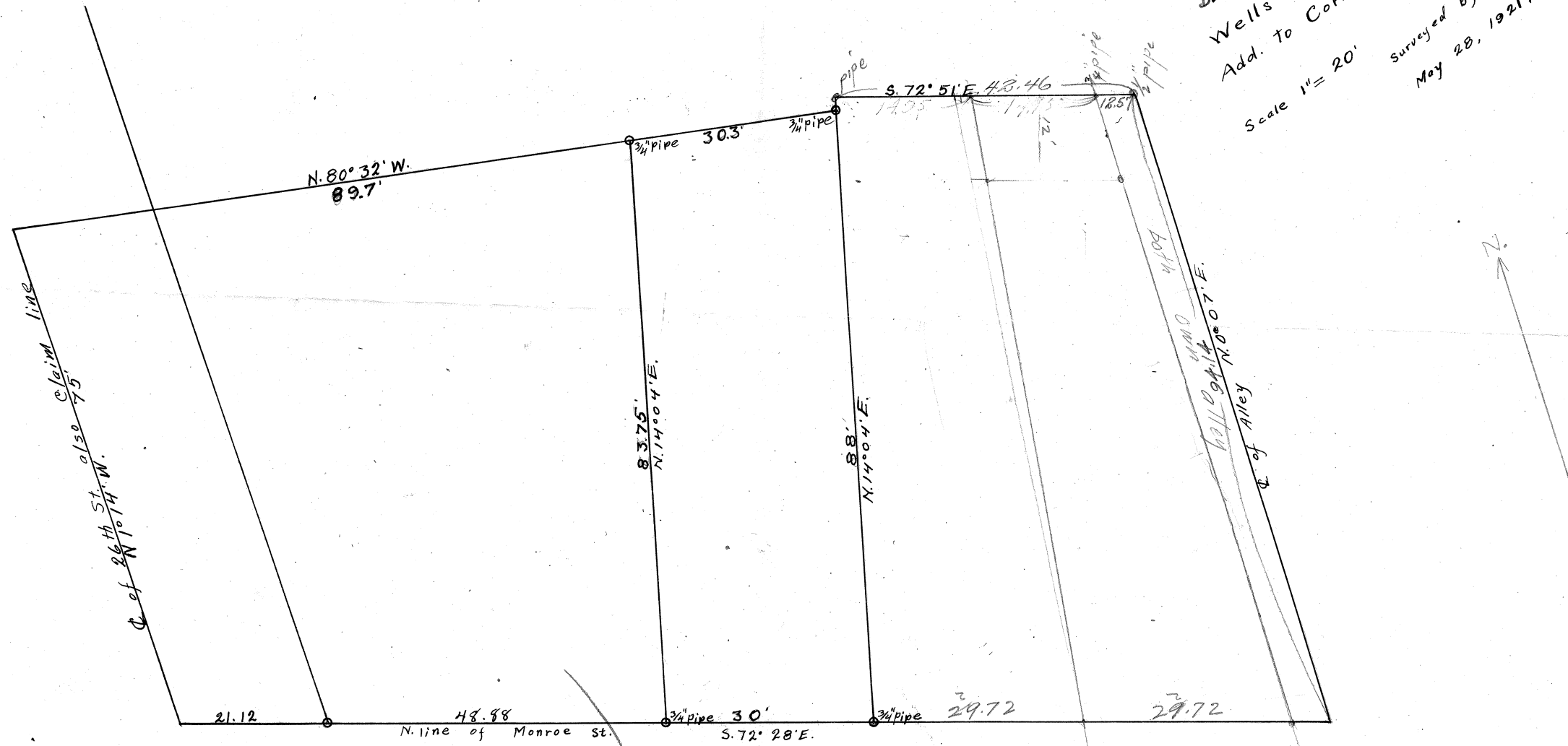


C.S. # 770

770
S.W. Part of
LOT
BLOCK 1 in
Wells and McElroy's
Add. to Corvallis, Oregon
Scale 1" = 20'
surveyed by W.C. Galloway C.S.
May 28, 1921.



N.E. of
Chas. Johnson Cl. 52

C.S. # 770A

770A Plat of

Block 1 in

Wells and McElroys

Add. to Corvallis, Oregon.

Scale 1" = 60'

W.C. Galloway C.S.

May 28, 1921.

