

LOT LINE ADJUSTMENT FOR

LESLEY SERRAO

Benton County
Surveyor's Office

C.S. FILE NO. 7714
FILING DATE 1-29-85
FILE SIZE 15" x 18"
P.A.D.

SEC. 31, T. 10 S., R. 3 W., W.M., BENTON CO. OREGON
(NE 1/4)

SCALE: 1" = 50'

JAN. 11, 1985

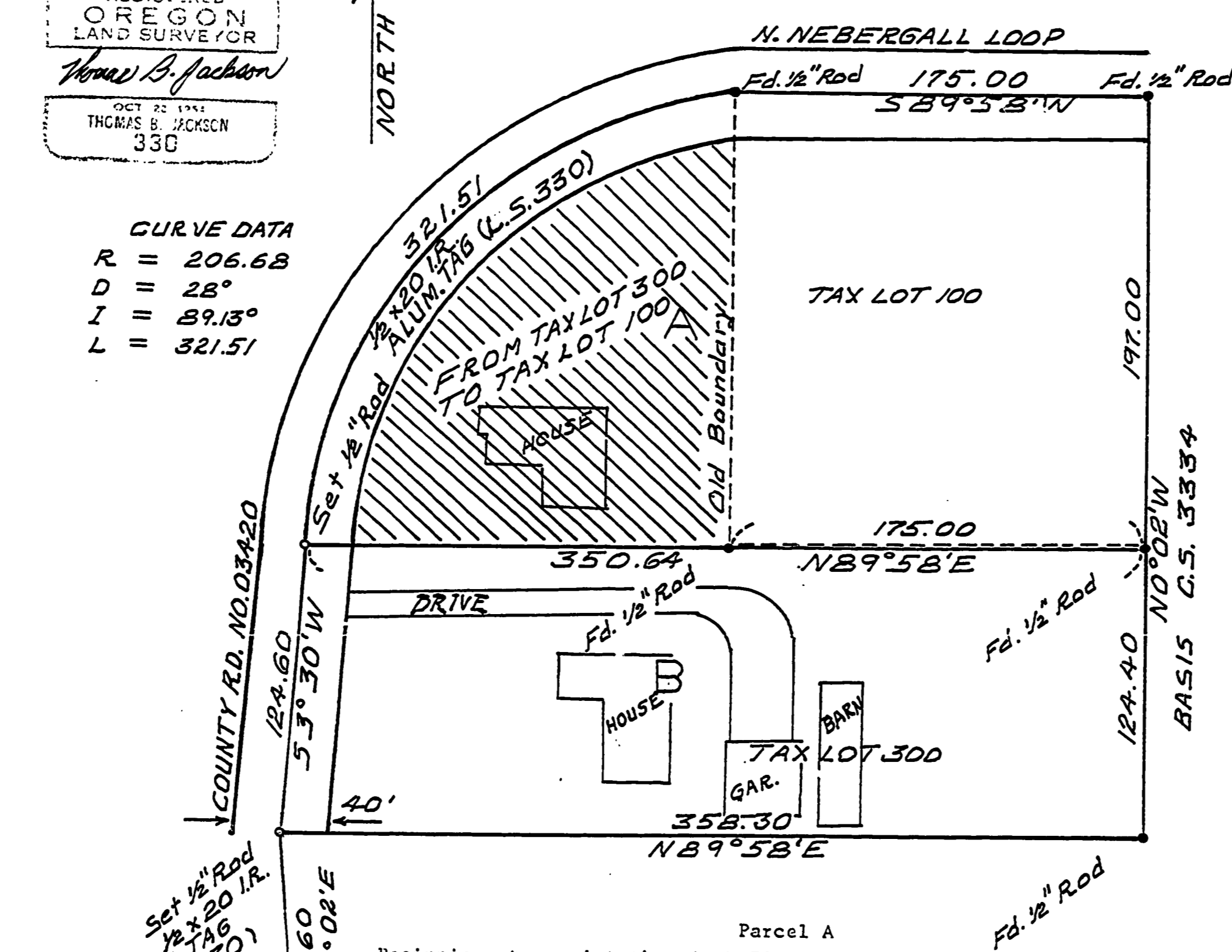
MINOR LAND PARTITION APPROVED

TOM B. JACKSON 3800 MT. VIEW SE# 94
REG. LAND SURVEYOR ALBANY, OREGON

PLANNING OFFICIAL DATE

REGISTERED
OREGON
LAND SURVEYOR
Thomas B. Jackson
OCT 22 1941
THOMAS B. JACKSON
330

CURVE DATA
R = 206.68
D = 28°
I = 89.13°
L = 321.51



Set 1/2" Rod
W. ALUM. TAG
(L.S. 330)

J.Q. THORNTON
ME. COR. D.L.G. 37
F.D. 1/2" PIPE
(AD)

1034.03
S 79° 03' W

C.S. 7714

Parcel A
Beginning at a point that is N 79°03' E a distance of 1034.03 feet, N 03°02' W a distance of 1235.60 feet, and N 03°30' E a distance of 124.60 feet from the Northeast corner of the J.Q. Thornton Donation Land Claim No. 37, and running thence N 89°58' E a distance of 350.64 feet; thence N 0°02' W a distance of 197.00 feet to a point on the center line of county road number 42; thence S 89°58' W a distance of 175.00 feet; thence southwesterly along the center line of county road number 42 to the point of beginning, the last course having an arc distance of 321.51 feet and a long chord which runs S 41°41' W a distance of 263.93 feet, containing 1.29 acres more or less.

Parcel B
Beginning at a point that is N 79°03' E a distance of 1034.03 feet and N 03°02' W a distance of 1235.60 feet from the Northeast corner of the J.Q. Thornton Donation Land Claim No. 37, and running thence N 89°58' E a distance of 358.30 feet; thence N 0°02' W a distance of 124.40 feet; thence S 89°58' W a distance of 350.64 feet; thence S 03°30' W a distance of 124.60 feet to the point of beginning, containing 1.01 acres.

The purpose of this boundary adjustment survey is to create two lots of 1.29 acres and 1.01 acres from an aggregate of two lots which were formerly 0.79 acres and 1.51 acres.

Measured bearings and distances were found to agree with those of County survey number 3334.

7714
7714