

7782

7782

C.S. 7782

NARRATIVE

The purpose of this survey was to set new corner monuments to represent the change of the lot line as shown. In effect Lot 2 disappears and Lots 1, 3 and 4 become larger. The new line was set to be 98.00 ft of even width from the new northeasterly line of Lot 1. New corner ① was set on line between found monuments. New corner ② was set on the curve defined by monuments ③ and ④ holding the record 150 ft radius.

LEGEND

- Found 5/8" rod.
- ⊙..... Found 5/8" rod with yellow plastic cap stamped "Northstar PLS 1823" set per CS 7681
- Set 5/8" x 30" rebar with yellow plastic cap stamped "Northstar PLS 1823."
- ()..... Record data from reference shown.
- Ⓐ..... Plat of Witham West Addition.
- Ⓑ..... CS 7681.

LOT LINE ADJUSTMENT APPROVED

planning official

date

REGISTERED PROFESSIONAL LAND SURVEYOR

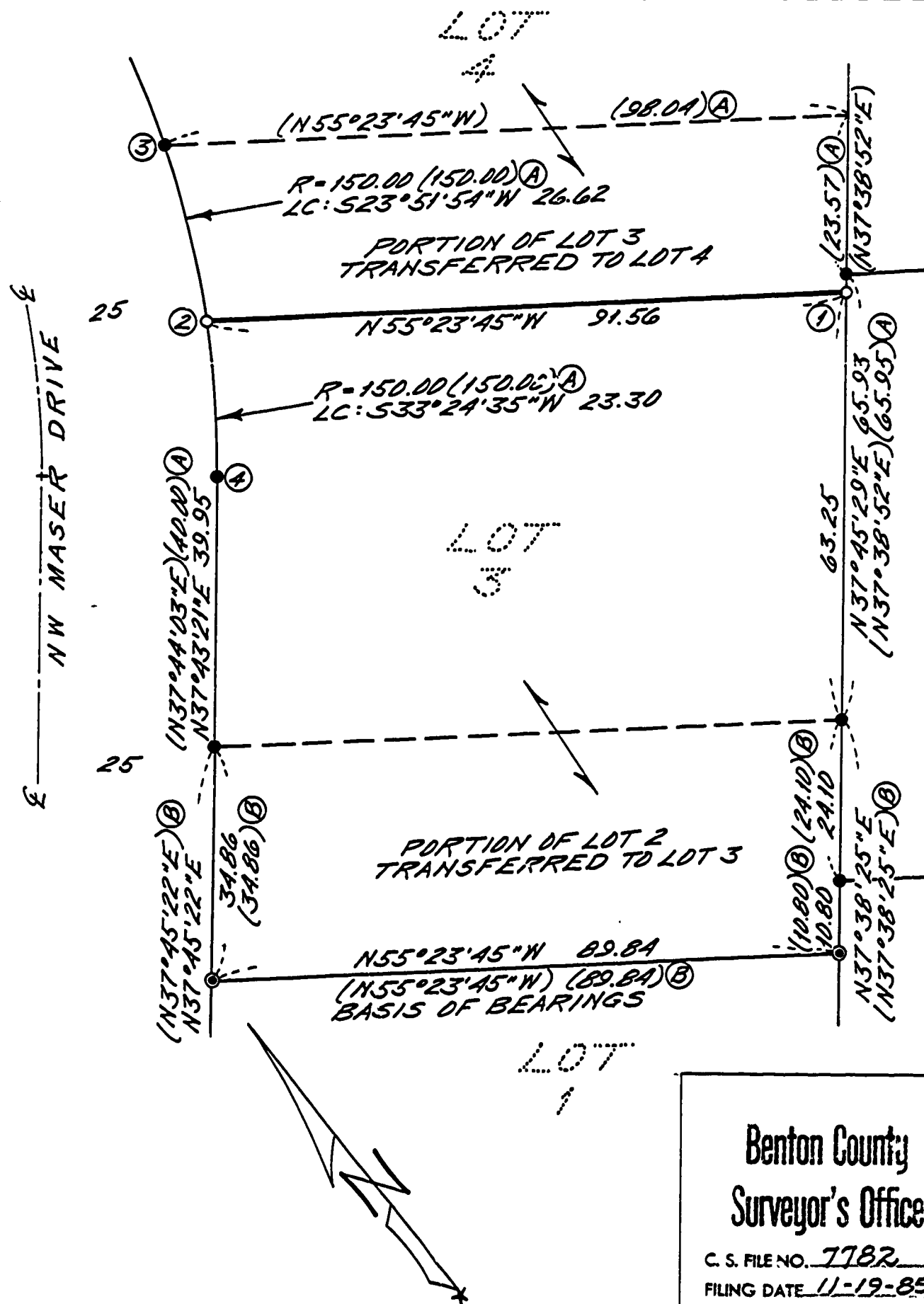
Theodore Langton

OREGON JULY 13, 1979 THEODORE JAMES LANGTON 1823

Northstar Surveying Inc.
402 NW 5th St.
Corvallis, Oregon, 97330
Ph: 757-9050

LOT LINE ADJUSTMENT SURVEY
for WITHAM WEST ASSOCIATES

LOTS 2, 3 & 4 BLK 2, WITHAM WEST ADDN.
to the CITY of CORVALLIS
in NE 1/4 SEC. 28, T11S, R5W, W.M.
in JOHN D. MULKEY DLC NO. 54
BENTON COUNTY, OREGON
NOVEMBER 5, 1985 SCALE: 1"=20'



Benton County
Surveyor's Office
C. S. FILE NO. 7782
FILING DATE 11-19-85
FILE SIZE 11x14