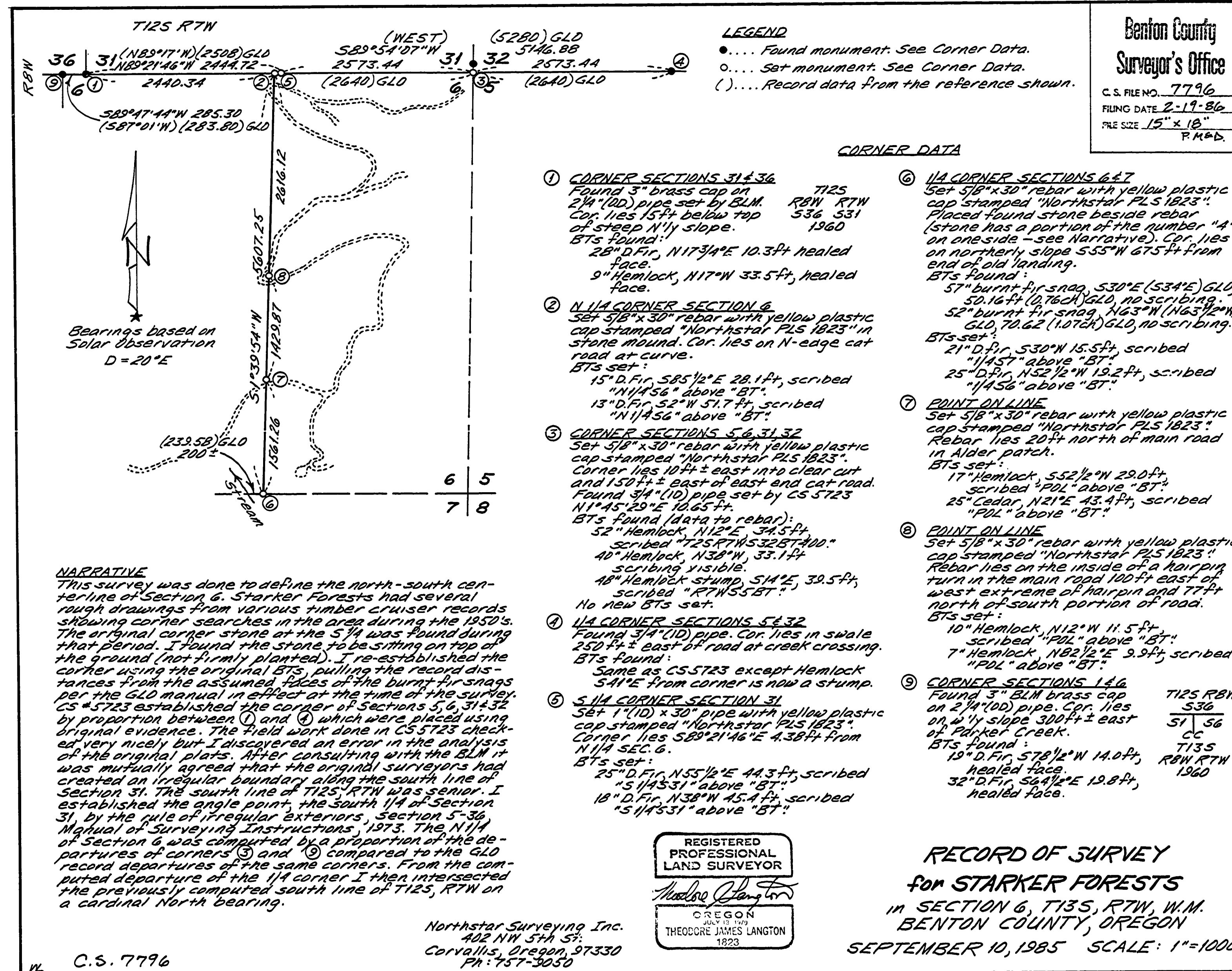


7796

7796



**NARRATIVE**  
 This survey was done to define the north-south centerline of Section 6. Starker Forests had several rough drawings from various timber cruiser records showing corner searches in the area during the 1950's. The original corner stone at the S 1/4 was found during that period. I found the stone to be sitting on top of the ground (not firmly planted). I re-established the corner using the original BTs, pulling the record distances from the assumed faces of the burnt fir stumps per the GLO manual in effect at the time of the survey. CS 5723 established the corner of Sections 5, 6, 31 & 32 by proportion between (1) and (4) which were placed using original evidence. The field work done in CS 5723 checked very nicely but I discovered an error in the analysis of the original plats. After consulting with the BLM it was mutually agreed that the original surveyors had created an irregular boundary along the south line of Section 31. The south line of T125, RTW was senior. I established the angle point, the south 1/4 of Section 31, by the rule of irregular exteriors, Section 5-36, Manual of Surveying Instructions, 1973. The N 1/4 of Section 6 was computed by a proportion of the departures of corners (3) and (6) compared to the GLO record departures of the same corners. From the computed departure of the 1/4 corner, I then intersected the previously computed south line of T125, RTW on a cardinal North bearing.

**LEGEND**  
 ●..... Found monument. See Corner Data.  
 ○..... Set monument. See Corner Data.  
 ( )..... Record data from the reference shown.

- CORNER DATA**
- ① **CORNER SECTIONS 31 & 36**  
 Found 3" brass cap on T125 RTW  
 2 1/4" (ID) pipe set by BLM. Cor. lies 15 ft below top of steep N 1/4 slope.  
 BTs Found:  
 28" D Fir, N17 3/4° E 10.3 ft healed face.  
 9" Hemlock, N17° W 33.5 ft, healed face.
  - ② **N 1/4 CORNER SECTION 6**  
 Set 5/8" x 30" rebar with yellow plastic cap stamped "Northstar PLS 1823" in stone mound. Cor. lies on N-edge cut road at curve.  
 BTs set:  
 15" D Fir, S85 1/2° E 28.1 ft, scribed "N14 5/6" above "BT".  
 13" D Fir, S2° W 51.7 ft, scribed "N14 5/6" above "BT".
  - ③ **CORNER SECTIONS 5, 6, 31 & 32**  
 Set 5/8" x 30" rebar with yellow plastic cap stamped "Northstar PLS 1823".  
 Corner lies 10 ft ± east into clear cut and 150 ft ± east of east end cut road.  
 Found 3/4" (ID) pipe set by CS 5723 N14 5/6° E 10.65 ft.  
 BTs found (data to rebar):  
 52" Hemlock, N12° E 34.5 ft, scribed "T125 RTW S3257400".  
 40" Hemlock, N30° W 33.1 ft, scribing visible.  
 48" Hemlock stump, S14° E 39.5 ft, scribed "RTW S5723".  
 No new BTs set.
  - ④ **1/4 CORNER SECTIONS 5 & 32**  
 Found 3/4" (ID) pipe. Cor. lies in swale 250 ft ± east of road at creek crossing.  
 BTs found:  
 Same as CS 5723 except Hemlock S41° E from corner is now a stump.
  - ⑤ **S 1/4 CORNER SECTION 31**  
 Set 1" (ID) x 30" pipe with yellow plastic cap stamped "Northstar PLS 1823".  
 Corner lies S89° 21' 46" E 4.38 ft from N 1/4 SEC. 6.  
 BTs set:  
 25" D Fir, N55 1/2° E 44.3 ft, scribed "S 1/4 S31" above "BT".  
 18" D Fir, N38° W 45.4 ft, scribed "S 1/4 S31" above "BT".
  - ⑥ **1/4 CORNER SECTIONS 6 & 7**  
 Set 5/8" x 30" rebar with yellow plastic cap stamped "Northstar PLS 1823".  
 Placed found stone beside rebar (stone has a portion of the number "4" on one side - see Narrative). Cor. lies on northerly slope 555° W 675 ft from end of old landing.  
 BTs Found:  
 57" burnt fir snag, S30° E (S341E) GLO, 50.16 ft (10.76 ft) GLO, no scribing.  
 52" burnt fir snag, N63° W (N63 1/2° W) GLO, 70.62 (107 ft) GLO, no scribing.  
 BTs set:  
 21" D Fir, S30° W 15.5 ft, scribed "1457" above "BT".  
 25" D Fir, N52 1/2° W 15.2 ft, scribed "1456" above "BT".
  - ⑦ **POINT ON LINE**  
 Set 5/8" x 30" rebar with yellow plastic cap stamped "Northstar PLS 1823".  
 Rebar lies 20 ft north of main road in Alder patch.  
 BTs set:  
 17" Hemlock, S52 1/2° W 29.0 ft, scribed "POL" above "BT".  
 25" Cedar, N21° E 43.4 ft, scribed "POL" above "BT".
  - ⑧ **POINT ON LINE**  
 Set 5/8" x 30" rebar with yellow plastic cap stamped "Northstar PLS 1823".  
 Rebar lies on the inside of a hairpin turn in the main road 100 ft east of west extreme of hairpin and 77 ft north of south portion of road.  
 BTs set:  
 10" Hemlock, N12° W 11.5 ft, scribed "POL" above "BT".  
 7" Hemlock, N82 1/2° E 9.9 ft, scribed "POL" above "BT".
  - ⑨ **CORNER SECTIONS 11G**  
 Found 3" BLM brass cap on 2 1/4" (ID) pipe. Cor. lies on 1/4 slope 300 ft ± east of Parker Creek.  
 BTs Found:  
 19" D Fir, S78 1/2° W 14.0 ft, healed face.  
 32" D Fir, S64 1/2° E 19.8 ft, healed face.

Benton County  
 Surveyor's Office  
 C. S. FILE NO. 7796  
 FILING DATE 2-17-86  
 FILE SIZE 15" x 10"  
 P.M.D.

REGISTERED  
 PROFESSIONAL  
 LAND SURVEYOR  
 Theodore James Langton  
 OREGON  
 THEODORE JAMES LANGTON  
 1823

**RECORD OF SURVEY**  
 for STARKER FORESTS  
 in SECTION 6, T125, RTW, W.M.  
 BENTON COUNTY, OREGON  
 SEPTEMBER 10, 1985 SCALE: 1"=1000'

Northstar Surveying Inc.  
 402 NW 5th St.  
 Corvallis, Oregon 97330  
 PH: 757-3050

C.S. 7796