

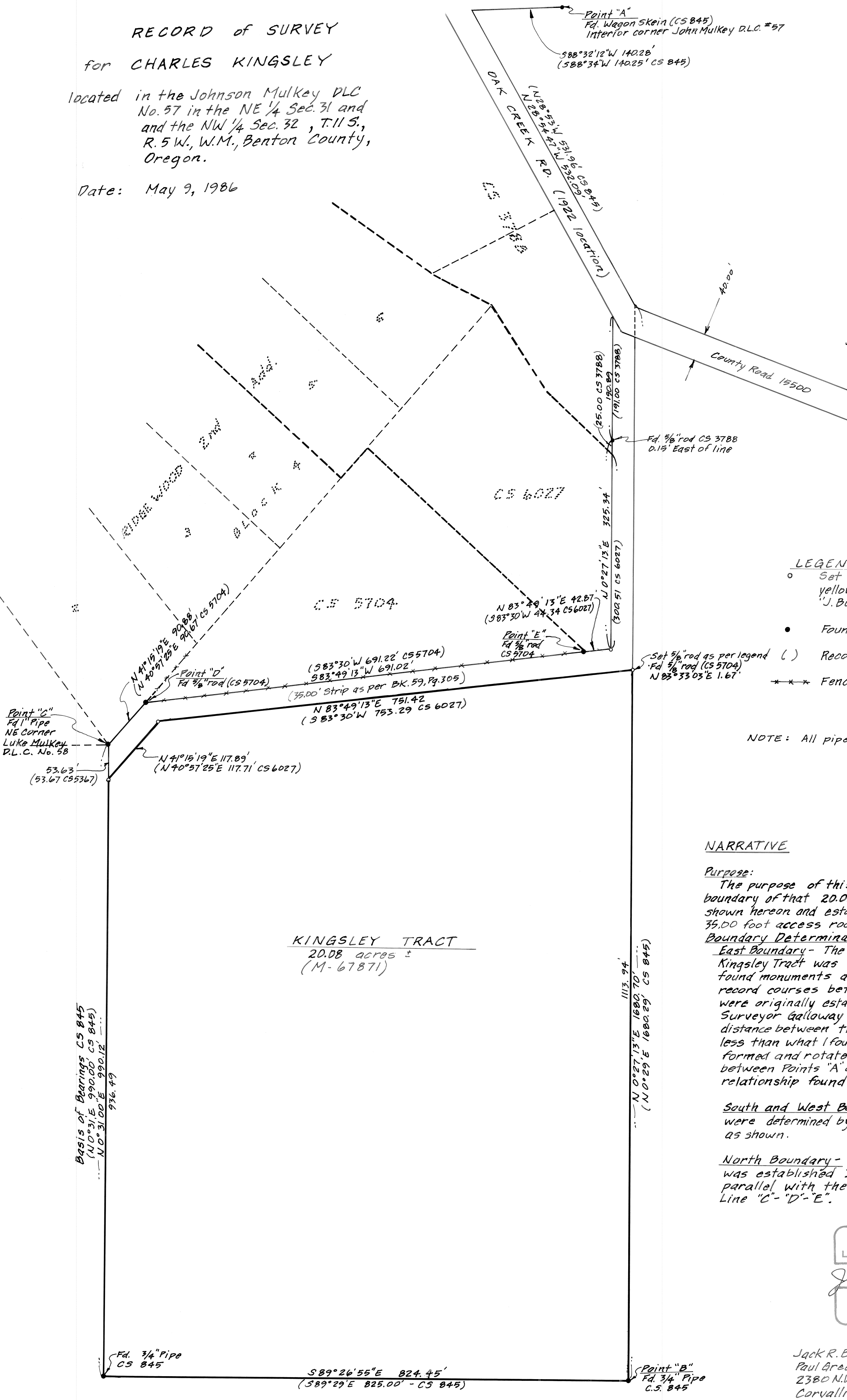
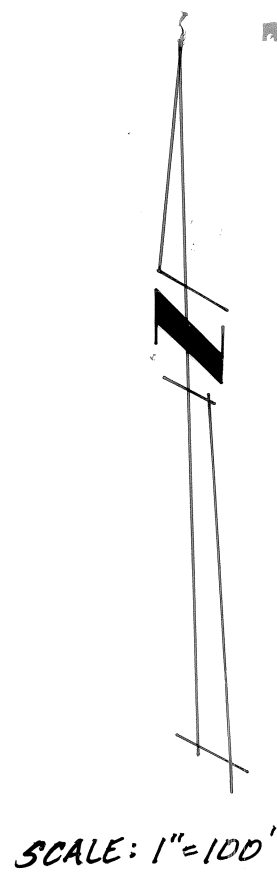
Benton County
Surveyor's Office

C. S. FILE NO. 7807
FILING DATE 5-16-1986
FILE SIZE 18" x 24"
P.M.S.D.

RECORD of SURVEY
for CHARLES KINGSLEY

located in the Johnson Mulkey DLC
No. 57 in the NE 1/4 Sec. 31 and
and the NW 1/4 Sec. 32, T.11 S.,
R. 5 W., W.M., Benton County,
Oregon.

Date: May 9, 1986



LEGEND

- Set 3/8" x 30" steel rod with yellow plastic cap marked: "J. Burrell OR 1630"
- Found monument as shown.
- () Record Information
- *** Fence

NOTE: All pipe sizes are inside diameter.

NARRATIVE

Purpose:

The purpose of this survey was to locate the boundary of that 20.08 acre KINGSLEY TRACT shown hereon and establish the location of the 35.00 foot access road.

Boundary Determination:

East Boundary - The east boundary of the Kingsley Tract was established by holding the found monuments at Points "A" and "B". The record courses between these points were originally established by County Surveyor Galloway in CS #845. The record distance between these points was 0.51 feet less than what I found in the field. I transformed and rotated the record courses between Points "A" and "B" to agree to the relationship found on the ground.

South and West Boundaries - These boundaries were determined by holding found monuments as shown.

North Boundary - The north boundary was established 35.00 feet from and parallel with the line defined as Line "C"- "D"- "E".

KINGSLEY TRACT
20.08 acres ±
(M-67871)

Basis of Bearings CS 845
(N 0° 31' E 990.00' CS 845)
(N 0° 31' 00" E 990.12' ...)
936.49

REGISTERED
PROFESSIONAL
LAND SURVEYOR

Jack R. Burrell

OREGON
JACK R. BURRELL
1630

Jack R. Burrell
Paul Green Consulting Services, Inc.
2380 N.W. Kings Blvd.
Corvallis, Oregon 97330
(503) 757-8771