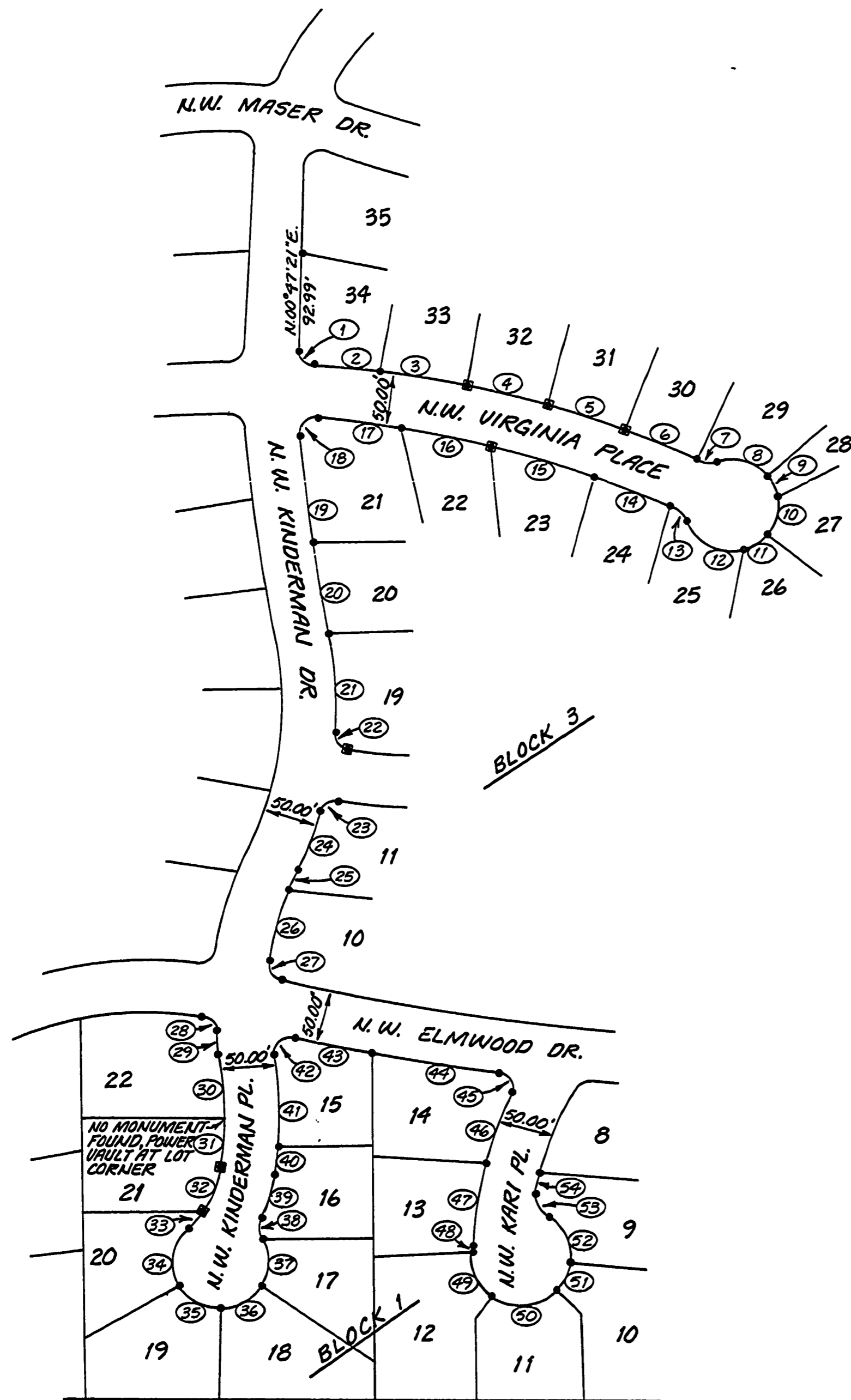


7819

7819

Benton County
Surveyor's Office

C. S. FILE NO. 7819
FILING DATE 6-30-1986
FILE SIZE 18" x 24"
P.M.D.



RECORD CURVE DATA

Table with 6 columns: NO., RADIUS, DELTA, LENGTH, LONG CHORD BRG. & DIST. It contains 50 rows of curve data for various lots.

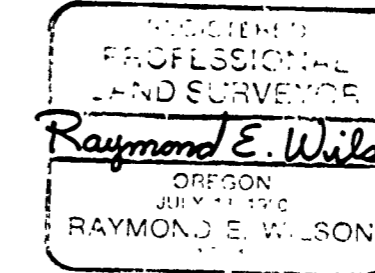
RECORD OF SURVEY
FOR
WALNUT PARK OWNERS

A PORTION OF THE "WALNUT PARK" SUBDIVISION
LOCATED IN A PORTION OF THE ALFRED WITHAM
D.L.C. NO. 55 AND IN THE NW 1/4 OF SEC. 28,
T. 11 S., R. 5 W., W. M.

CORVALLIS, BENTON COUNTY, OREGON
JUNE 16, 1986 SCALE: 1" = 100'

NARRATIVE

THE PURPOSE OF THIS SURVEY IS TO REESTABLISH LOT CORNER
MONUMENTS THAT WERE DESTROYED AS A RESULT OF UTILITY
TRENCHING OPERATIONS.
PRIOR TO TRENCHING ALL EXISTING MONUMENTS WERE
LOCATED, THESE EXISTING MONUMENTS WERE THEN TIED AND
REFERENCED TO PROTECTED TRAVERSE POINTS.
AFTER THE TRENCHING OPERATIONS AND CLEAN UP WERE
COMPLETED, THE MONUMENTS THAT WERE DESTROYED DURING
CONSTRUCTION WERE THEN REPLACED TO THEIR ORIGINAL
LOCATION.



RAYMOND E. WILSON
PAUL GREEN CONSULTING SERVICES
2380 N.W. KINGS BLVD.
CORVALLIS, OR. 97330
(503) 757-8771

LEGEND

- FOUND 5/8" IRON ROD SET DURING THE
PLATTING OF THE "WALNUT PARK"
SUBDIVISION
- FOUND 5/8" IRON ROD AS PER ABOVE THAT
WAS SUBSEQUENTLY LOST DURING TRENCHING.
RESET 5/8" x 30" STEEL ROD WITH YELLOW
PLASTIC CAP MARKED "R.E. WILSON I.S. 1924"

NOTES

- ALL MEASUREMENTS SHOWN ARE RECORD
DATA ONLY. THE PURPOSE OF THIS SURVEY
WAS TO RESTORE MONUMENTS LOST DURING
UTILITY CONSTRUCTION TO THEIR ORIGINAL
POSITIONS. FIELD MEASUREMENTS BETWEEN
ADJOINING MONUMENTS WERE NOT CONSIDERED
RELEVANT.
- BASIS OF BEARINGS IS THE PLAT OF "WALNUT PARK"