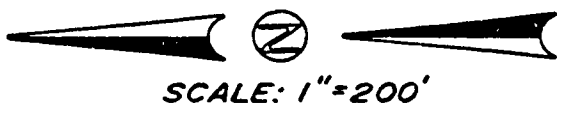


DRAWING NUMBER  
**7927**

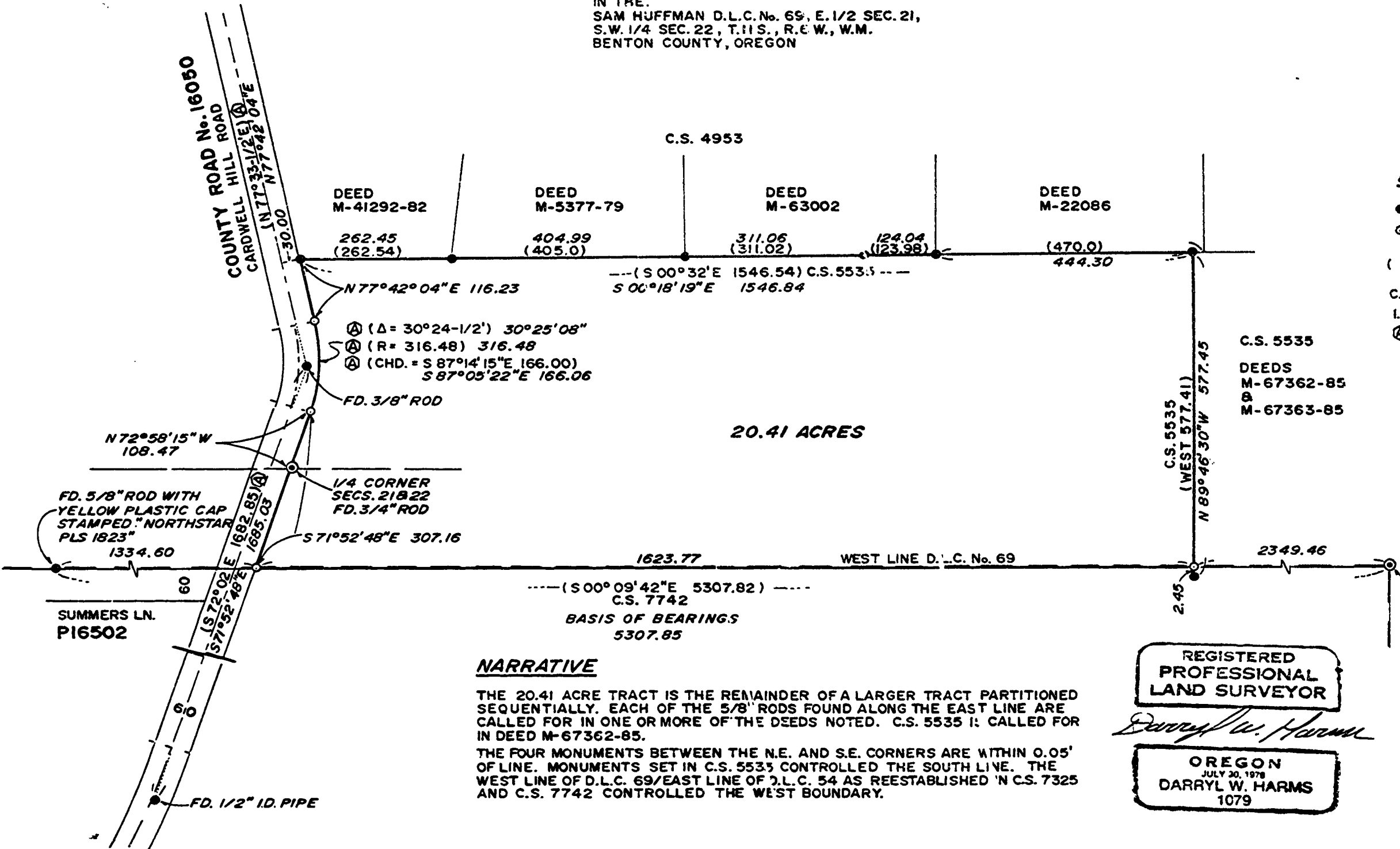
DRAWING NUMBER  
**7927**



**MAP OF SURVEY**  
for:  
**C.O. MAYS ESTATE**  
AUGUST 23, 1986

IN THE:  
SAM HUFFMAN D.L.C. No. 69, E. 1/2 SEC. 21,  
S.W. 1/4 SEC. 22, T.11 S., R. 6 W., W.M.  
BENTON COUNTY, OREGON

**Benton County**  
**Surveyor's Office**  
C.S. FILE NO. 7927  
FILING DATE 9-10-86  
FILE SIZE 11 X 17



- LEGEND**
- 5/8" IRON ROD FOUND (EXCEPT AS NOTED)
  - 5/8" X 30" IRON ROD WITH YELLOW PLASTIC CAP (D.W. HARMS PLS 1079 ON CAP) SET.
  - ( ) RECORD INFORMATION FROM C.S. 4953 (EXCEPT AS NOTED)
  - C.S. BENTON COUNTY SURVEY
  - I.D. INNER DIAMETER
  - Ⓐ DATA OF/OR CALCULATED FROM: THE 1929 ROAD PLANS OF ROUTE 50, SECTION B, ROAD No. 553

**NARRATIVE**

THE 20.41 ACRE TRACT IS THE REMAINDER OF A LARGER TRACT PARTITIONED SEQUENTIALLY. EACH OF THE 5/8" RODS FOUND ALONG THE EAST LINE ARE CALLED FOR IN ONE OR MORE OF THE DEEDS NOTED. C.S. 5535 IS CALLED FOR IN DEED M-67362-85.

THE FOUR MONUMENTS BETWEEN THE N.E. AND S.E. CORNERS ARE WITHIN 0.05' OF LINE. MONUMENTS SET IN C.S. 5535 CONTROLLED THE SOUTH LINE. THE WEST LINE OF D.L.C. 69/EAST LINE OF D.L.C. 54 AS REESTABLISHED IN C.S. 7325 AND C.S. 7742 CONTROLLED THE WEST BOUNDARY.

REGISTERED  
PROFESSIONAL  
LAND SURVEYOR

*Darryl W. Harms*

OREGON  
JULY 20, 1978  
DARRYL W. HARMS  
1079

DARRYL W. HARMS, PLS  
P.O. BOX 1051  
CORVALLIS, OR. 97339  
PHONE: (503) 758-5579

