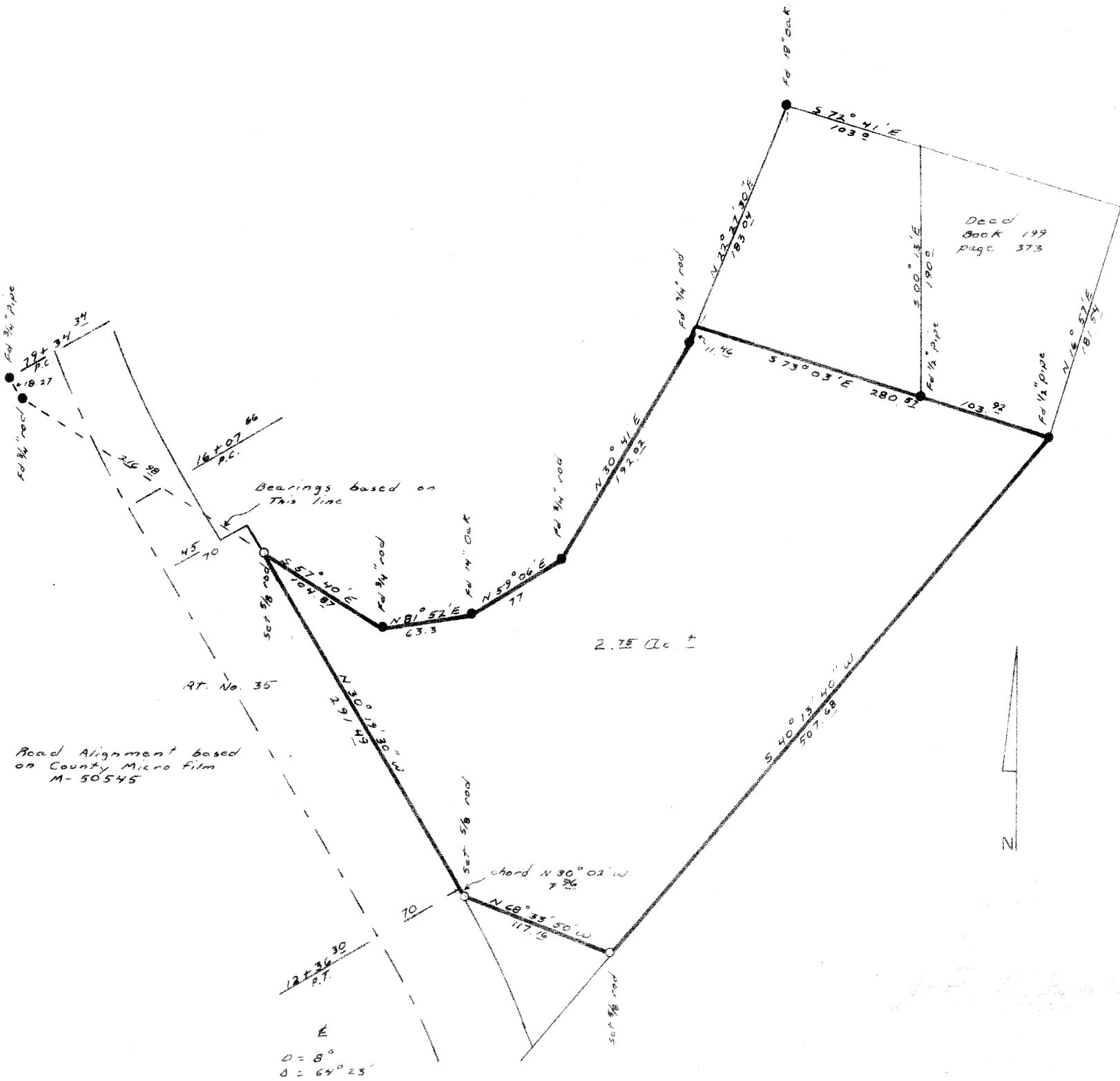


SURVEY FOR
 HARMAN LAND CORPORATION
 in
 West 1/2, Herman C. Lewis D.L.C. No. 47
 T. 11 S., R. 5 W., W.M. Benton County, Oregon
 Nov. 4 1974 Scale; 1" = 100'

THIS IS A COPY
 OF A PAPER COPY
 GIVEN TO BENTON
 COUNTY, OR
 ORIGINAL
 MYLAR IN FILE



100021

11/15/74