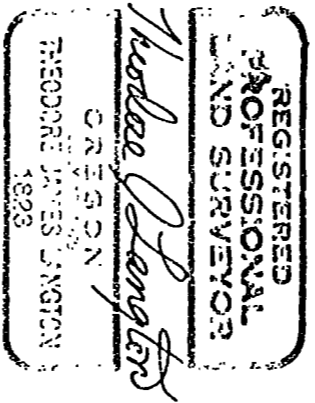


8001

8001

15 - 1 5 1987

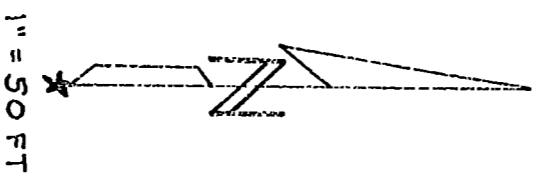
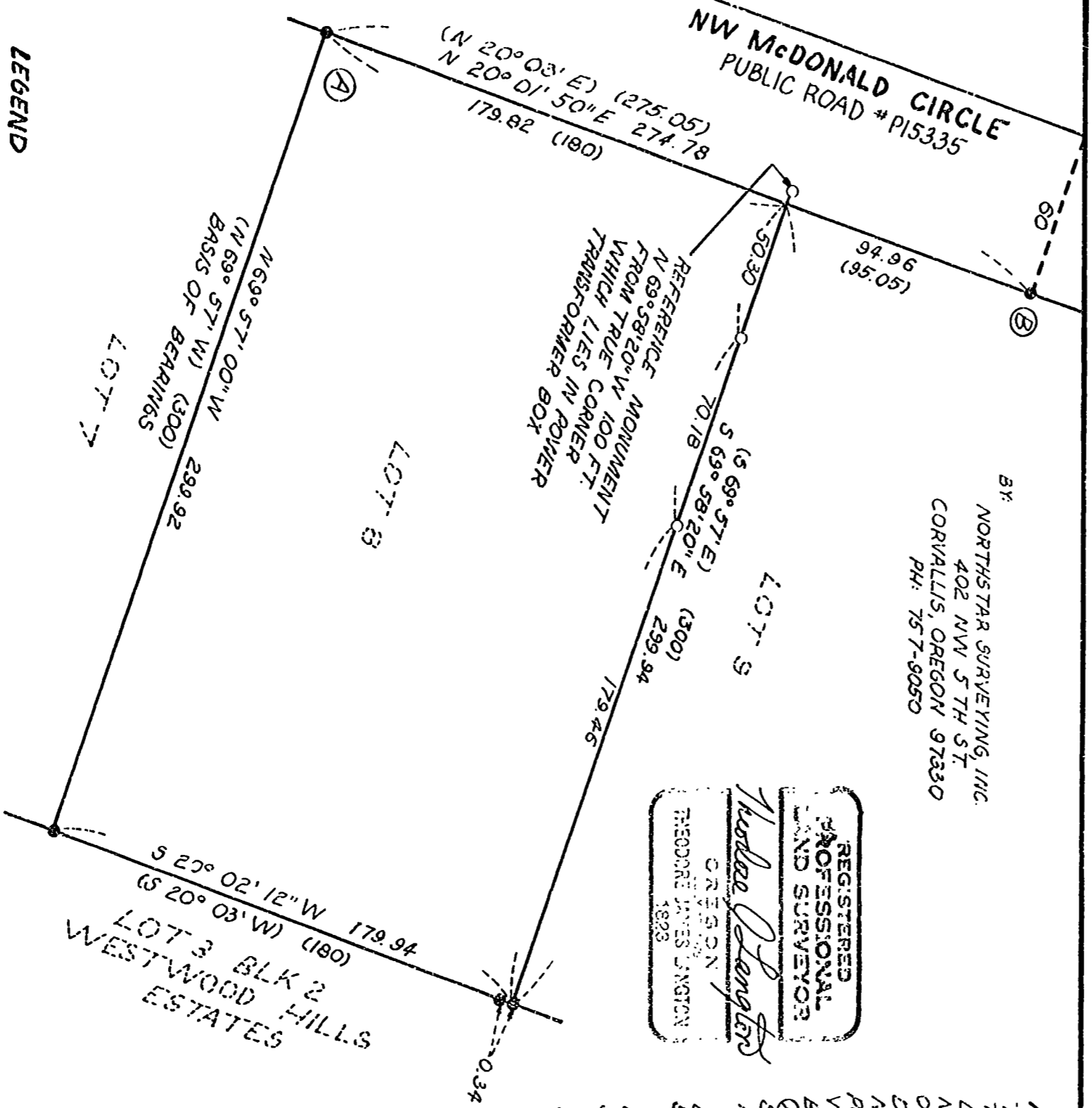
BY: NORTHSTAR SURVEYING, INC.
402 NW 5TH ST
CORVALLIS, OREGON 97330
PH: 757-8050



NARRATIVE
THE PURPOSE OF THIS SURVEY WAS TO SET THE NW CORNER OF LOT 8 AND SET 2 POINTS ON THE NORTH LINE OF THE LOT. THE ORIGINAL NW CORNER WAS DESTROYED WHEN A TRANSFORMER BOX WAS INSTALLED BY THE POWER COMPANY. THE POSITION WAS RE-ESTABLISHED BY PROPORTION BETWEEN THE SW CORNER, POINT (1) AND THE CURVE POINT, POINT (2). AN "X" WAS SCRATCHED ON THE TOP OF THE TRANSFORMER BOX AT THE TRUE CORNER AND A REFERENCE MONUMENT WAS SET ON THE PROJECTION OF THE NORTH PROPERTY LINE 100 FT FROM THE TRUE CORNER. A SECOND 5/8" ROD WAS FOUND NEAR THE NE CORNER. THE POSITION OF THE NORTHERLY ROD FIT THE PLAT BETTER RELATIVE TO THE SE AND NW CORNERS SO I USED IT. THE SOUTHERLY ROD WAS APPARENTLY THE NW CORNER OF LOT 3, BLK 2, WESTWOOD HILLS ESTATES.

Surveyed by
Theodore James Johnson
5-19-1987
11" x 17"

LEGEND
○ FOUND MONUMENT: 5/8" IRON ROD
○ SET MONUMENT: 5/8" X 30" REBAR WITH RED PLASTIC CAP
STAMPED "NORTHSTAR PLS 1823"
() PARENTHESES INDICATE RECORD DATA FROM THE PLAT OF "FIRST ADDITION TO WESTWOOD HILLS ESTATES"



RECORD OF SURVEY

FOR
MATT AMANO

ON

LOT 8, BLK 2

FIRST ADDITION TO WESTWOOD HILLS ESTATES
IN PRICE FULLER DLC NO. 37
NE 1/4 SEC 1, T11S, R3W, W.M.,
BENTON COUNTY, OREGON
MAY 7, 1987

1 2 3 4 5 6 7 8 9 10 11 12