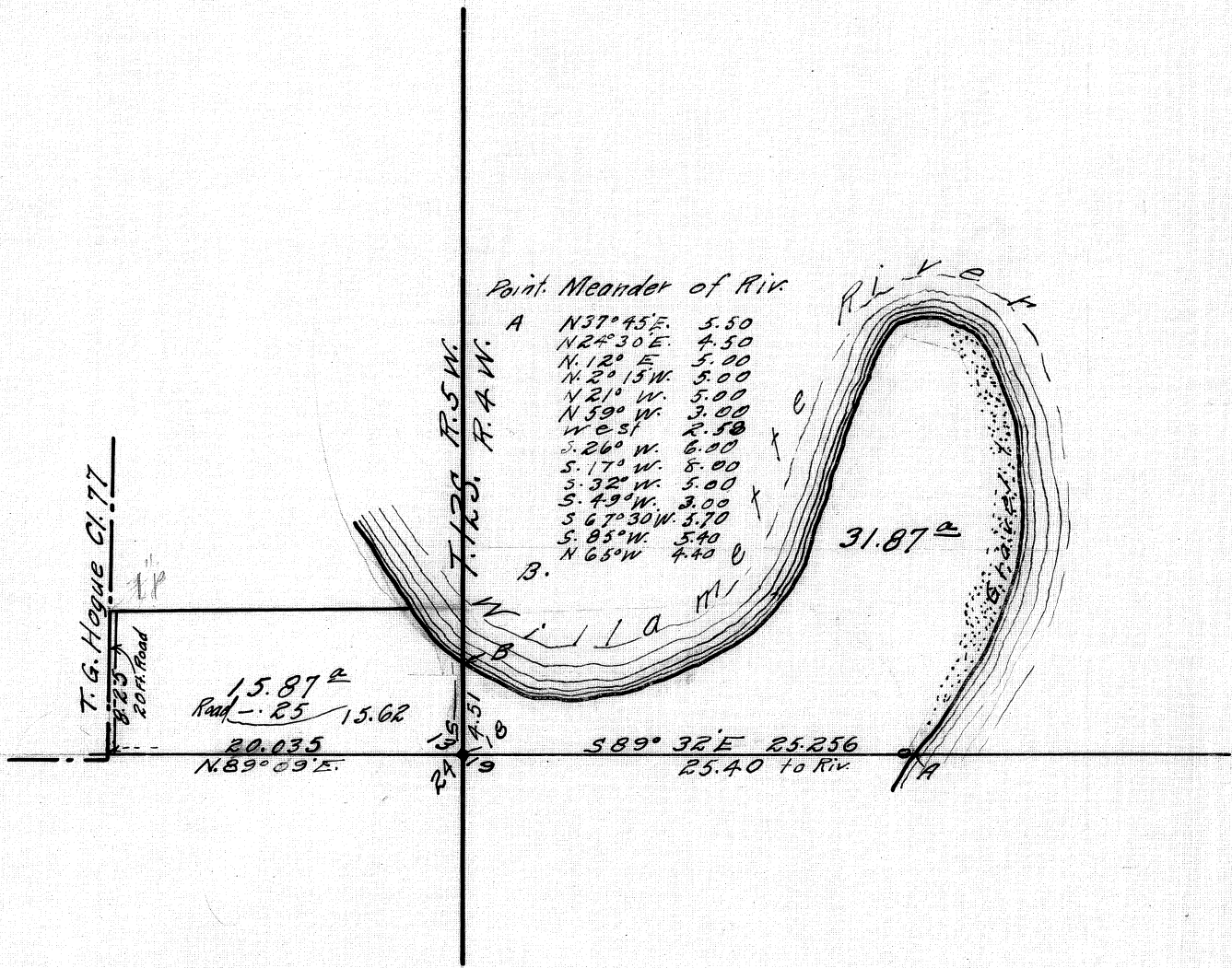


186  
 P. G. Hogue  
 Surveyor  
 Admitted

801  
 C.S. No. 186  
 Secs. 13 & 18, T. 12S, R. 4E5W.  
 Scale: - 1" = 1000s Oct. 28, 1921



Point Meander of Riv.

A	N 37° 45' E.	5.50
	N 22° 30' E.	4.50
	N. 12° E.	5.00
	N. 20° 15' W.	5.00
	N 21° W.	5.00
	N 59° W.	3.00
	West	2.50
	S. 26° W.	6.00
	S. 17° W.	8.00
	S. 32° W.	5.00
	S. 49° W.	3.00
	S 67° 30' W.	3.70
	S. 85° W.	5.40
B.	N 65° W.	4.40

T. G. Hogue Cl. 77  
 8.25  
 20 Ft. Road

15.87  
 Road - .25 15.62  
 20.035  
 N 89° 09' E.

S 89° 32' E 25.256  
 25.40 to Riv.

31.87