

C.S. 8010

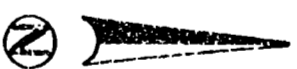
MAP OF SURVEY
FOR:
LOREN AND LINDA COLLINS
JUNE 9, 1987

() = INFORMATION OF/OR CALCULATED FROM
THE PLAT OF WESTERN VIEW SECOND ADDITION

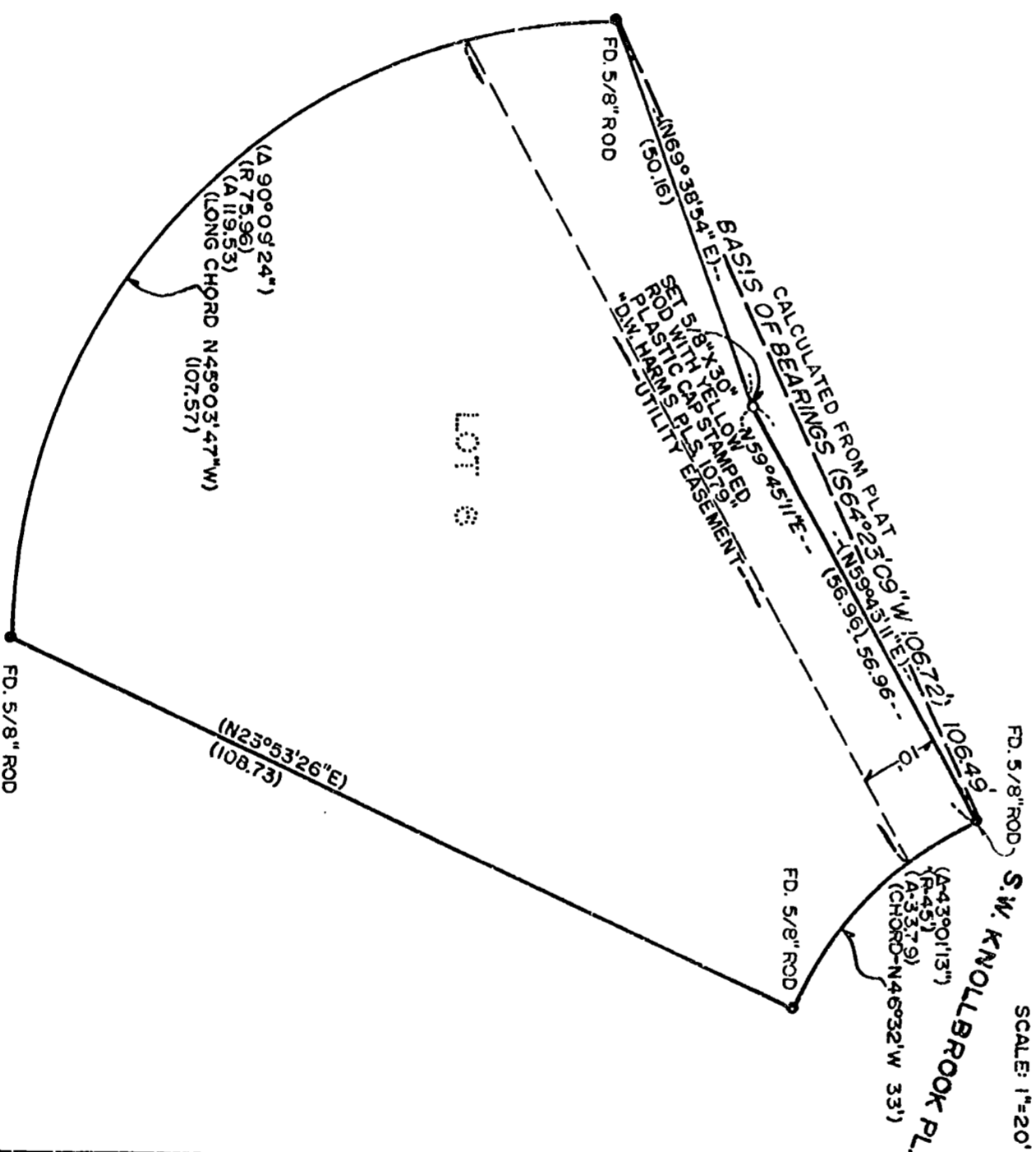
LOCATION:
LOT 6, WESTERN VIEW 2ND ADDITION
S.W. 1/4 SECTION 3
JAMES A BENNETT, D.L.C. NO. 45
TOWNSHIP 12 SOUTH, RANGE 5 WEST, WM.
BENTON COUNTY, OREGON.

NARRATIVE:

THE PURPOSE OF THIS SURVEY IS TO FIND EXISTING AND REPLACE MISSING CORNER MONUMENTS. TO REPLACE THE ANGLE POINT MONUMENT ON THE NORTH LINE OF LOT 6; OCCUPIED NORTH CORNER, SIGHTED WEST CORNER, FIELD PLAT BEARING AND DISTANCE TO ANGLE POINT FROM THE NORTH CORNER.



SCALE: 1"=20'



Benton County
Surveyor's Office

C.S. FILE NO. 8010

FILING DATE 6-10-1987

FILE SIZE 8 1/2" x 14"
P.M.E.S.

DARRYL W. HARMS, P.L.S.
P.O. BOX 109
CORVALLIS, OREGON 97339
PHONE (503) 758-5579

REGISTERED
PROFESSIONAL
LAND SURVEYOR

OREGON
JULY 20, 1978
DARRYL W. HARMS
1079