

BOUNDARY SURVEY FOR:  
**ARNOLD WEBBER**

Benton County  
Surveyor's Office

IN  
NE 1/4 SEC 33 T 14 S, R 5 W W.M.  
BENTON CO., OREGON

C. S. FILE NO. 8015

FILE DATE 6-24-1987

APRIL 30, 1987

SCALE 1" = 100'

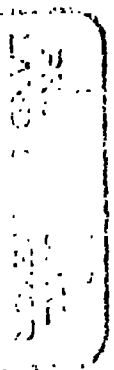
FILE SIZE 8 1/2" X 14"  
R. S. C.

OR.S. REQUIRED STATEMENTS

BY: R.S. CASTLEBERRY  
ASSOCIATED SURVEYORS  
P.O. BOX 394  
HARRISBURG, OR 97446  
995-6002

ARNOLD WEBBER WANTED TO LOCATE THE TWO SHOWN BOUNDARIES ON THE GROUND CAUSING THE REASON FOR THE SURVEY.

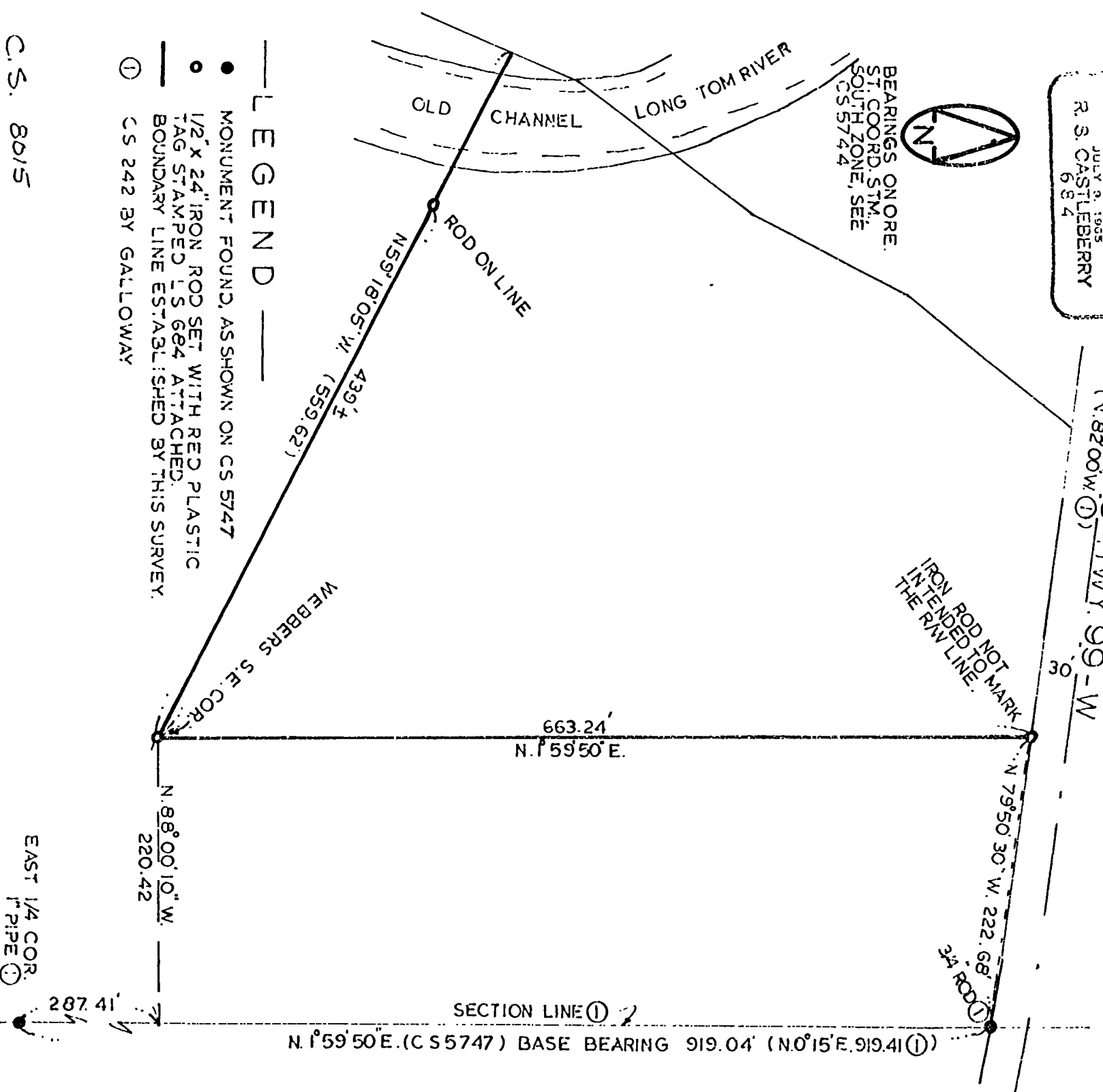
THE SURVEY PROCEDURE: LOCATE THE EAST 1/4 CORNER OF SEC. 33 & THE 3/4" ROD NEAR THE SOUTH R/W LINE OF HWY. 99-W, RUN DEED COURSE & DISTANCE TO WEBBER'S S.E. CORNER, THEN FROM THE S.E. CORNER RUN THE DEED BEARINGS N 1/2" E. W. L.V. THERE- FROM.



*R.S. Castleberry*  
OREGON  
JULY 2, 1985  
R. S. CASTLEBERRY  
6834



BEARINGS ONORE.  
S.T. COORD. STM.  
SOUTH ZONE, SEE  
CS 5744



LEGEND

- MONUMENT FOUND, AS SHOWN ON CS 5747
- 1/2" X 24" IRON ROD SET WITH RED PLASTIC TAG STAMPED LS 684 ATTACHED.
- BOUNDARY LINE ESTABLISHED BY THIS SURVEY.
- ① CS 242 BY GALLOWAY

C.S. 8015

1 2 3 4 5 6 7 8 9 10 11 12