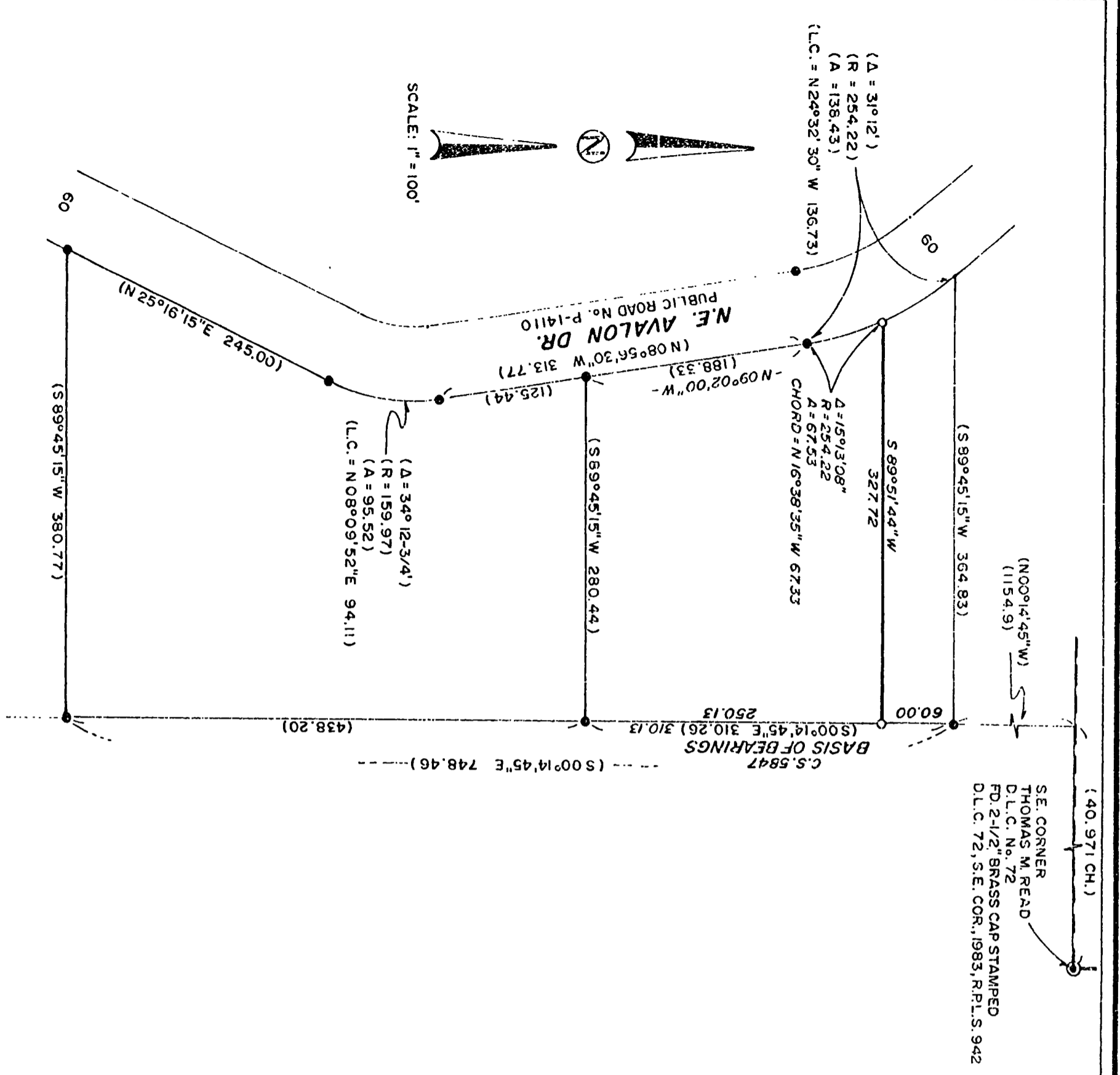


8033

8033



SE. CORNER
THOMAS M. READ
D.L.C. No. 72
FD-2-1/2" BRASS CAP STAMPED
D.L.C. 72, S.E. COR., 1983, R.P.L.S. 942

MAP OF SURVEY

FOR:

ALDRIDGE and MARGARET WEST

JULY 6, 1987

LOCATION

N.W. 1/4 & S.W. 1/4 SECTION 6
T.11S., R.4W., W.M.
BENTON COUNTY, OREGON

LEGEND

- 5/8" IRON ROD FOUND
- SET 5/8" X 30" IRON ROD WITH YELLOW PLASTIC CAP STAMPED "D.W. HARMS, P.L.S. 1079".
- () INFORMATION OF/OR CALCULATED FROM C.S. 5847

NARRATIVE

THE PURPOSE OF THIS SURVEY IS TO MONUMENT THE NORTHEAST AND NORTHWEST CORNERS OF PARCEL 1 AS DESCRIBED ON M-26441-81, BENTON COUNTY DEED RECORDS. I SET THE NORTHEAST CORNER ON LINE BETWEEN FOUND 5/8" RODS AS SHOWN. SINCE THE CURVE MONUMENTS ARE CALLED FOR IN THE DEED I SET THE NORTHWEST CORNER USING DATA CALCULATED FROM C.S. 5847 FROM THE POINT OF CURVE.

DARRYL W. HARMS, P.L.S.
P.O. BOX 1051
CORVALLIS, OR. 97339
PHONE: (503) 758-5579

REGISTERED
PROFESSIONAL
LAND SURVEYOR

OREGON
JULY 24, 1979
DARRYL W. HARMS
1079

Benton County
Surveyor's Office

C.S. FILE NO. 9033
HEARING DATE 8-24-1987
FILE SIZE 11x17"