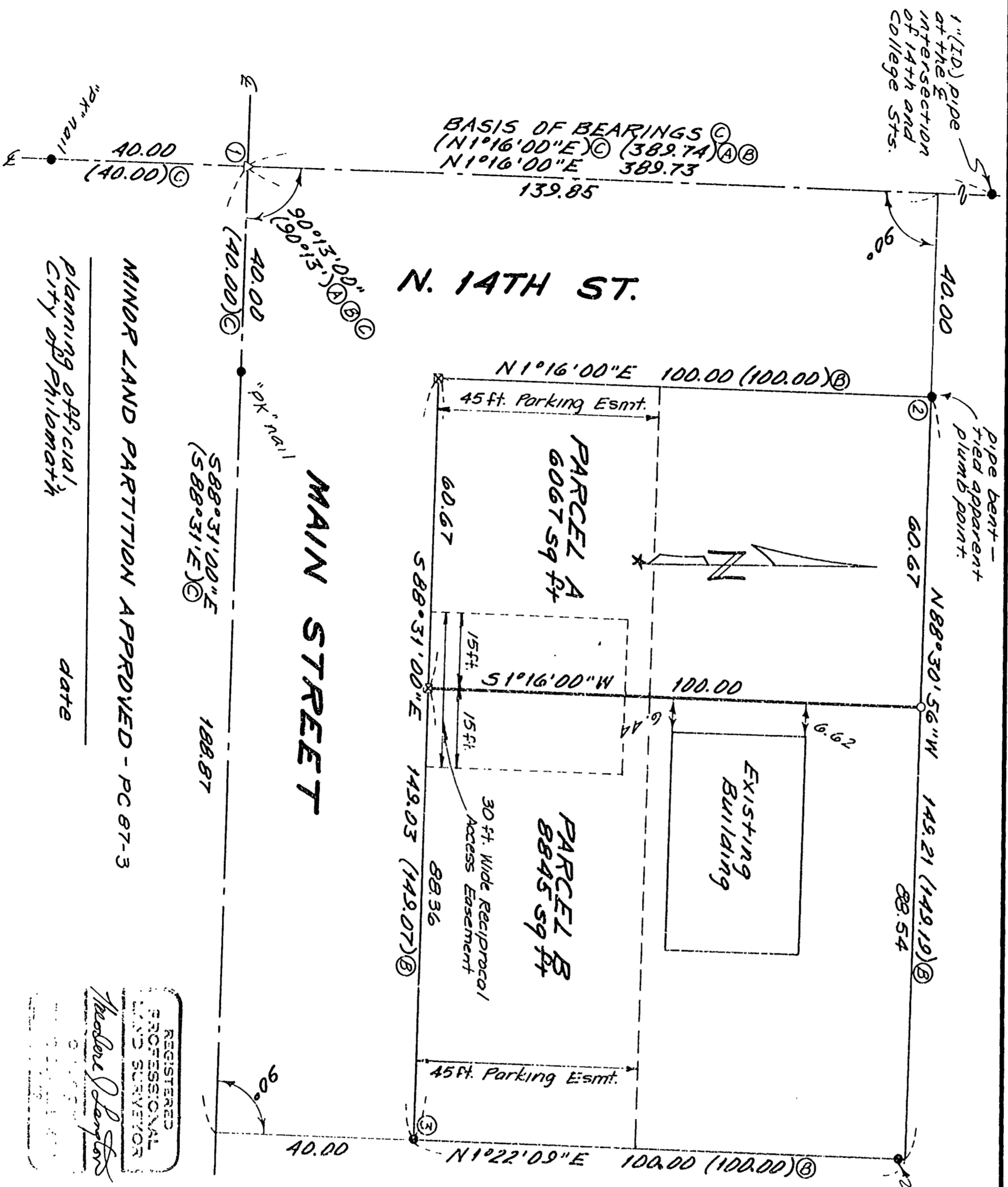


8045

8045



MINOR LAND PARTITION APPROVED - PC 87-3

Planning official,
City of Philomath

date

REGISTERED PROFESSIONAL LAND SURVEYOR

Madison Longton

Northstar Surveying Inc.
402 NW 5th St.
Corvallis, Oregon 97330
PH: 757-9050

PC-87-3

MINOR LAND PARTITION SURVEY

for

RALPH GASTON

IN

LOT 91 BLOCK 17 CITY OF PHILOMATH
SW 1/4 SECTION 12, T12S, R6W, W.M.
BENTON COUNTY, OREGON

SEPTEMBER 11, 1987

1" = 20 ft

NARRATIVE

This map represents the required survey for City of Philomath Minor Land Partition PC 87-3. The parent parcel was originally surveyed on CS 3027. I was replaced using the 2 found "PK" nails per CS 4553. I computed the NE corner rather than held the found pipe because the deed calls "the south 100 ft of lot 91". The found monuments at ② and ③ fit record angle and distance so nicely that I felt the most logical point to be out of position was the NE corner. I held the pipe for line and went 100 ft from ③. The new partition line was calculated per the client's request relative to a proposed building.

8045
9-15-1987
18" x 15"