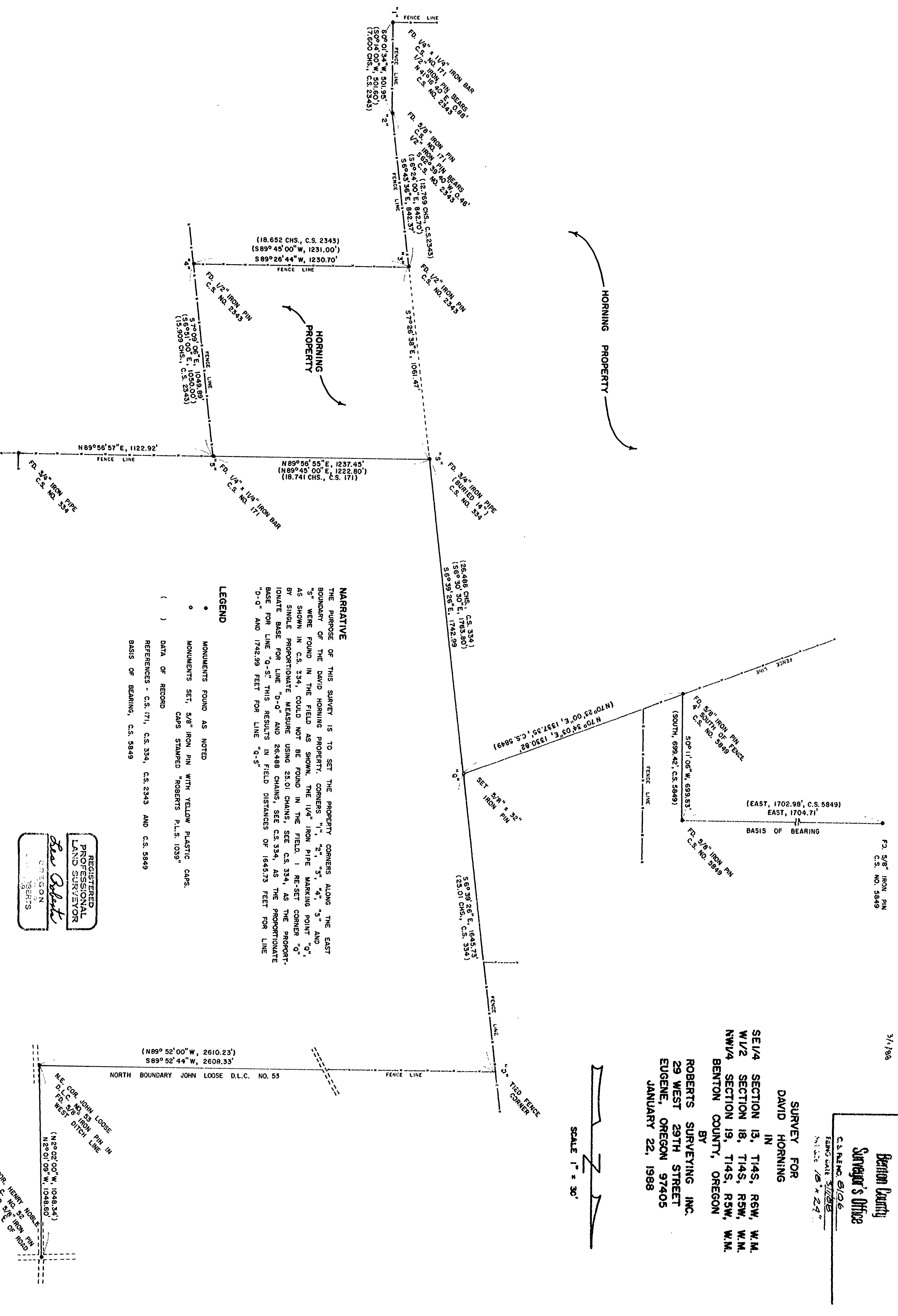


S106
3/1/88

Benton County
Surveyor's Office
C.S. FILE NO. 8106
FIELD DATE 3/1/88
FILE NO. 18-24

SURVEY FOR
DAVID HORNING
IN
SE1/4 SECTION 13, T14S, R6W, W.M.
W1/2 SECTION 18, T14S, R5W, W.M.
NW1/4 SECTION 19, T14S, R5W, W.M.
BENTON COUNTY, OREGON
BY
ROBERTS SURVEYING INC.
29 WEST 29TH STREET
EUGENE, OREGON 97405
JANUARY 22, 1988

SCALE 1" = 30'



NARRATIVE

THE PURPOSE OF THIS SURVEY IS TO SET THE PROPERTY CORNERS ALONG THE EAST BOUNDARY OF THE DAVID HORNING PROPERTY. CORNERS "1", "2", "3", "4", "5" AND "6" WERE FOUND IN THE FIELD AS SHOWN. THE 1/4" IRON PIPE MARKING POINT "Q", AS SHOWN IN C.S. 334, COULD NOT BE FOUND IN THE FIELD. I RE-SET CORNER "Q" BY SINGLE PROPORTIONATE MEASURE USING 25.01 CHAINS. SEE C.S. 334, AS THE PROPORTIONATE BASE FOR LINE "D-Q" AND 26.488 CHAINS, SEE C.S. 334, AS THE PROPORTIONATE BASE FOR LINE "Q-S". THIS RESULTS IN FIELD DISTANCES OF 1645.73 FEET FOR LINE "D-Q" AND 1742.99 FEET FOR LINE "Q-S"

LEGEND

- MONUMENTS FOUND AS NOTED
 - MONUMENTS SET, 5/8" IRON PIN WITH YELLOW PLASTIC CAPS. CAPS STAMPED "ROBERTS P.L.S. 1039"
 - () DATA OF RECORD
- REFERENCES - C.S. 171, C.S. 334, C.S. 2343 AND C.S. 5849
BASIS OF BEARING, C.S. 5849

REGISTERED
PROFESSIONAL
LAND SURVEYOR
OREGON
DAVID HORNING
See Report

