

MINOR LAND PARTITION SURVEY FOR GERALD AND LILLIAN STEPHENS

IN
SILAS BELKNAP DLC NO. 40
SE 1/4 SEC. 14, T.14S., R.6W., W.M.
BENTON COUNTY, OREGON
JULY 21, 1988

LEGEND

- ... FOUND MONUMENT: 1/2" ROD UNLESS OTHERWISE NOTED
- ... SET MONUMENT: 5/8" X 3/4" REBAR WITH RED PLASTIC CAP STAMPED "NORTHSTAR PLS 1823"
- ... APPROXIMATE FENCE LINE
- ()... RECORD DATA FROM THE REFERENCES SHOWN BELOW:
- ①... CS 364
- ②... CS 5620
- ③... M-19368, BENTON COUNTY DEED RECORDS
- ④... M-33029, BENTON COUNTY DEED RECORDS

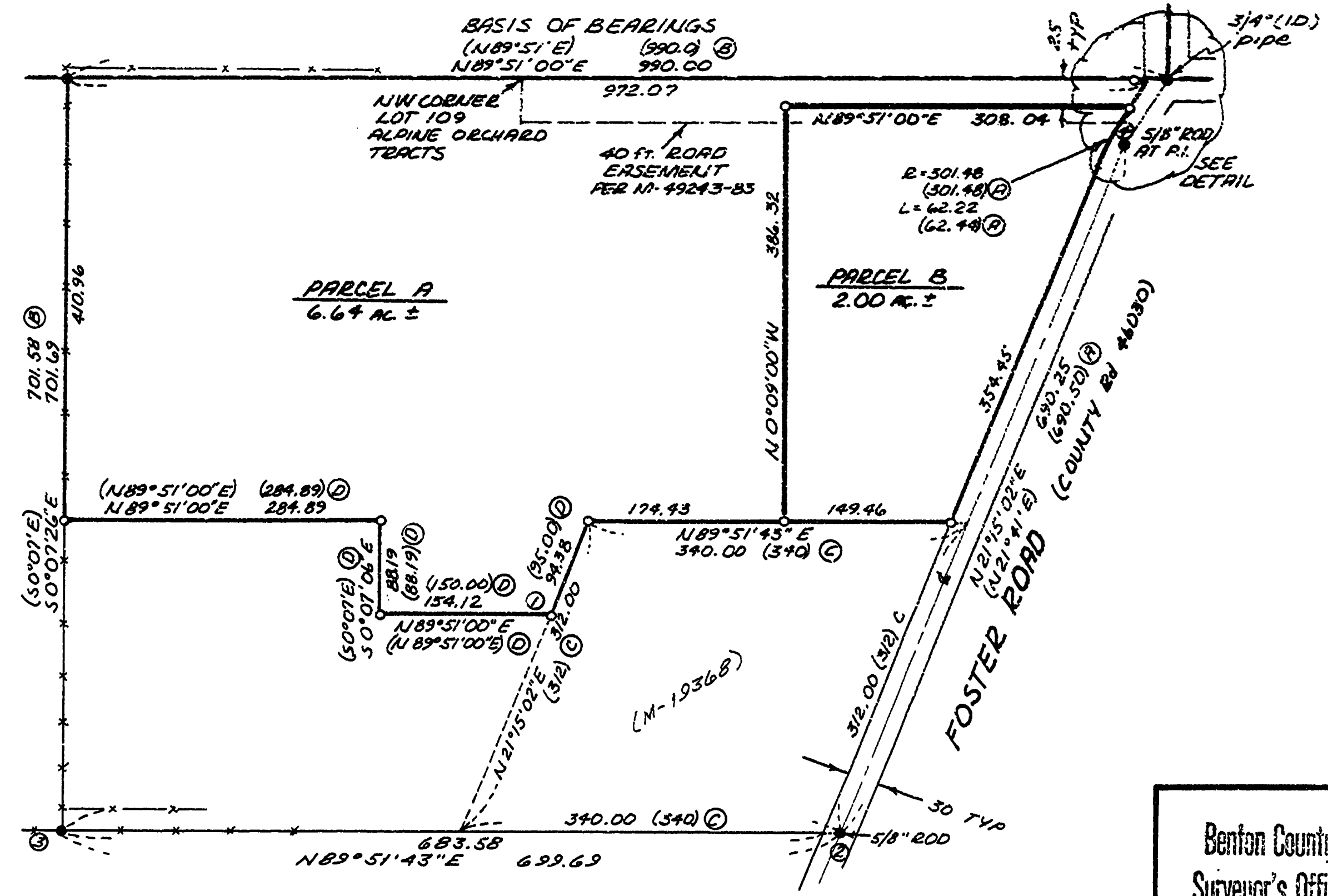
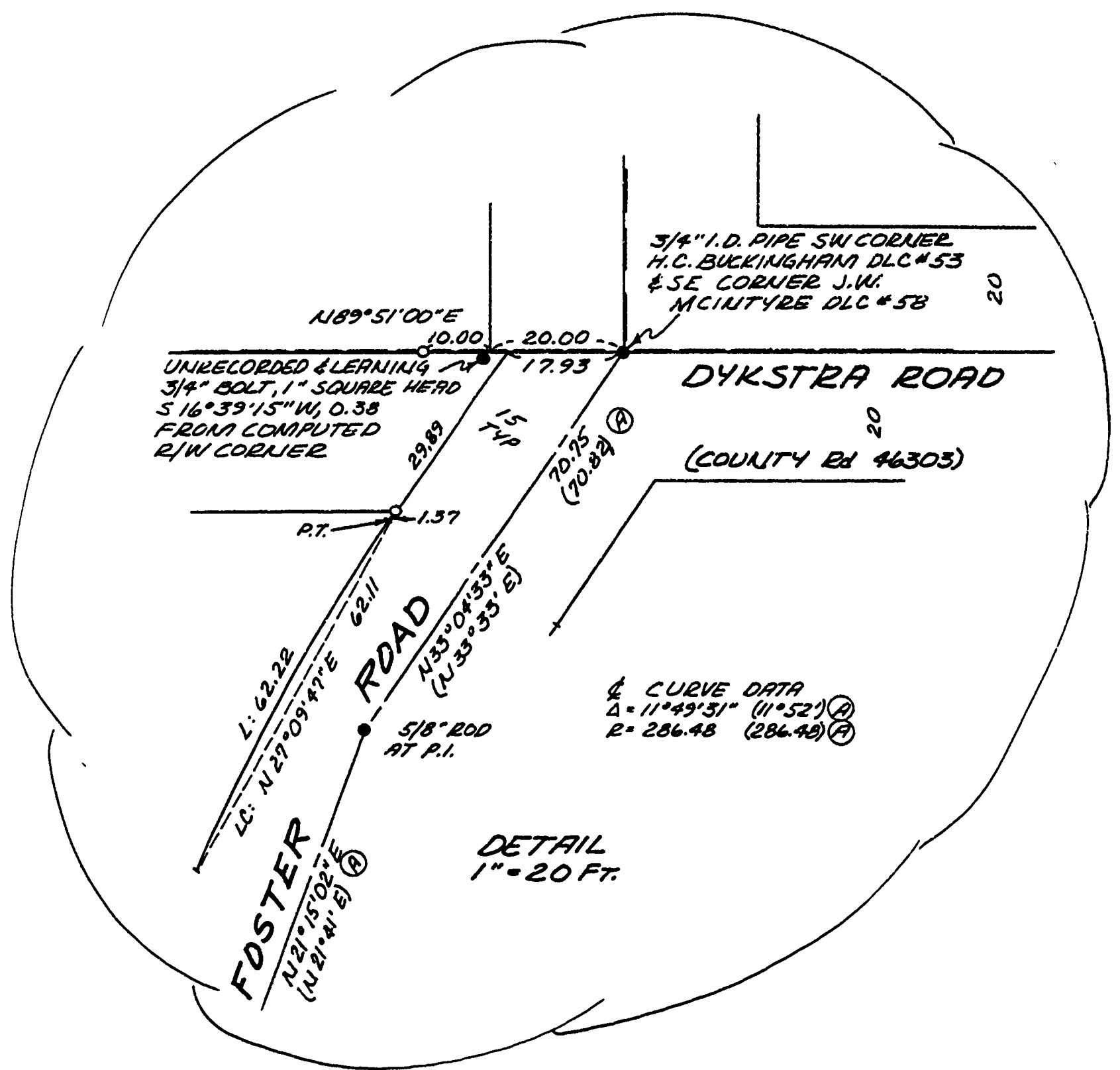
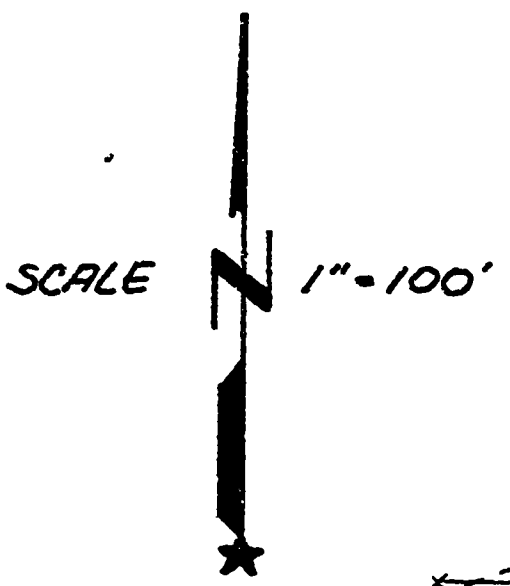
NARRATIVE

THE PURPOSE OF THIS SURVEY IS TO CREATE THE 2 ACRE PARCEL AS SHOWN. THE PARENT PARCEL WAS ORIGINALLY DESCRIBED IN M-33029. I ESTABLISHED THE CORNERS OF SAID PARCEL PARALLEL TO COURSES ESTABLISHED BY FOUND MONUMENTATION, AND HOLDING THE DEED RECORD DISTANCES. THIS WAS TRUE UP TO CORNER ①. THIS POSITION, PER SAID DESCRIPTION, WAS CALLED TO LIE ON THE WESTERLY BOUNDARY OF M-19368. I ESTABLISHED M-19368 RELATIVE TO MONUMENTS 2, 3, AND 4, HOLDING THE RECORD DISTANCES.



NORTHSTAR SURVEYING INC.
402 NW 5TH STREET
CORVALLIS, OREGON 97330
PH. 757-9050

MINOR LAND PARTITION LD-88-26
APPROVED
John M. ... 9-30-88
PLANNING OFFICIAL DATE



Benton County
Surveyor's Office
C.S. FILE NO. 8163
FILING DATE 8-26-1988
FILE SIZE 183.24"

DRAWING NUMBER
8163

DRAWING NUMBER
8163