

DRAWING NUMBER
8168

PLAN HOLD CORPORATION • IRVINE, CALIFORNIA
REORDER BY NUMBER 075AP

DRAWING NUMBER
8168

PLAN HOLD CORPORATION • IRVINE, CALIFORNIA
REORDER BY NUMBER 075AR

25 3167
9/13/88

RECORD OF SURVEY
for SHARON HASTINGS WELTY
of LOT 39 of EDGEWOOD PARK ESTATES
in the NW1/4 of SECTION 27, T11S, R5W, W.M.
in the J. D. MULKEY D.L.C. NO. 54
BENTON COUNTY, OREGON
AUGUST 19, 1988

Benton County
Surveyor's Office

C.S. FILE NO. 8168
FILING DATE 9/13/1988
FILE SIZE 15" x 18"
RJR

- Found 5/8" iron rod, except as noted
 - Set 5/8" X 30" iron rod with plastic cap (LSIOB4)
 - () Data of record as per the plat of EDGEWOOD PARK ESTATES
- Iron pipe diameters are inside measurement

NARRATIVE

The purpose of this survey is to monument the South and West lines of Tax Lot 5101 (Lot 39, except a small parcel along the South line of Lot 39) as per M-52028-83.

The basis of bearings is the computed bearing from the NE corner of Lot 34 to the SW corner of Lot 41 (Point A). Said bearing is S19°47'47"W. The computed distance is 458.37. The actual distance is 458.28.

The SE corner of Lot 37 was reestablished by a distance-distance intersection (using record Plat distances) from the NE and SW corners of Lot 37. The NW corner of Lot 39 was then reestablished by a distance-distance intersection (using record Plat distances) from the SE corner of Lot 37 and the SW corner of Lot 39. The SW corner of Tax Lot 5101 was then set at deed distance (M-52028-83) along the West line of Lot 39.

The West line of Roosevelt Street was reestablished by holding the position of monuments found at the NE corner of Lot 34 and the SE corner of Lot 40.

The computed distance between these points is 434.84. The actual distance is 434.52. Points along the street were reestablished proportionally based on the comparison of record to actual measurements. The P.C. was reestablished so that the radius point is at right angles to the tangent and 515.00 feet from the P.C. and the SE corner of Lot 40. The SE corner of Lot 41 then computes to be 515.01 feet from the radius point.

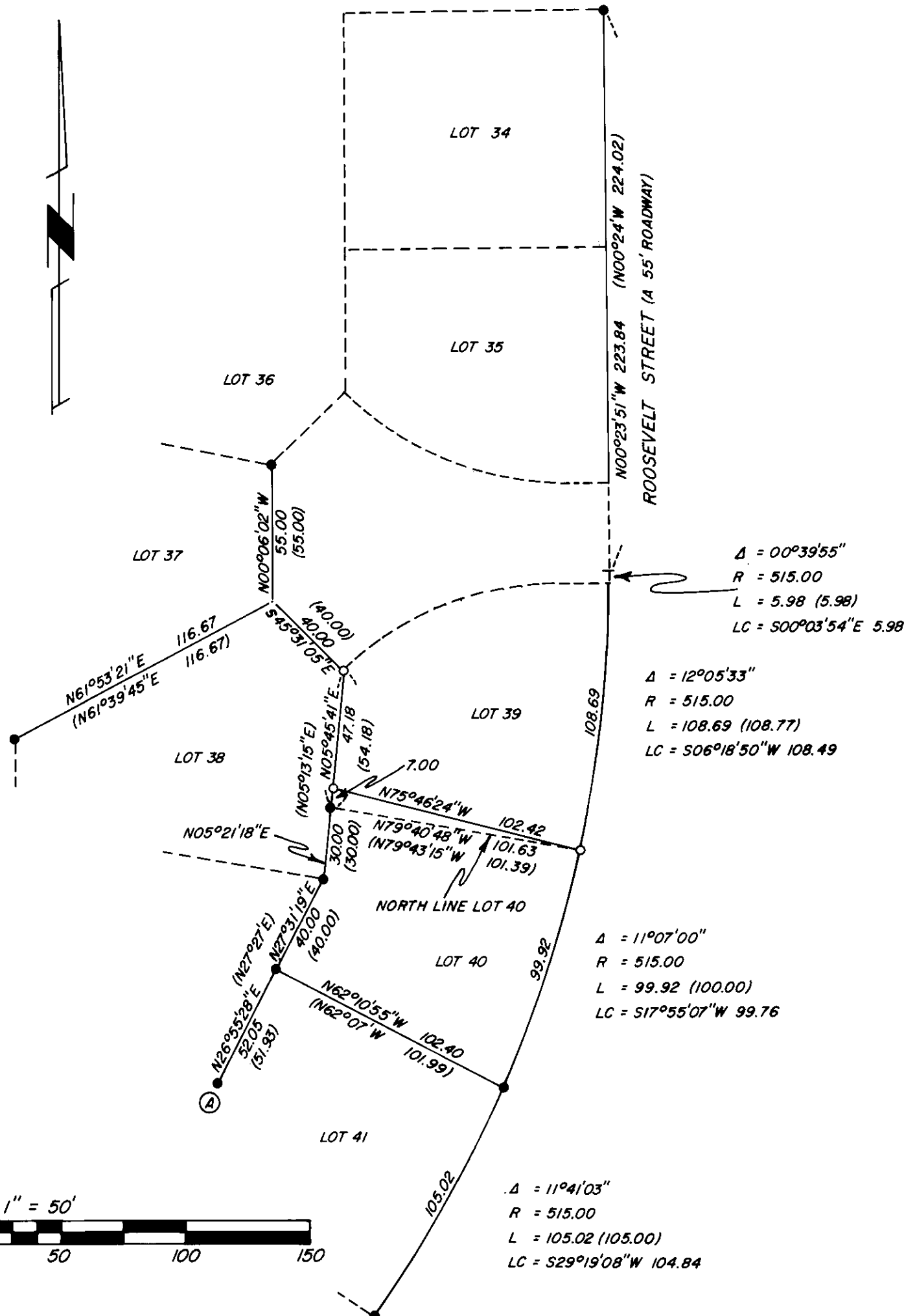
The monuments at the NE and SE corners of Lot 41 were found bent. Both monuments were straightened and then reset.

A 3/4" iron pipe (unknown origin) was found N23°45'W, 5.90 of the SE corner of Lot 39. A 3/4" iron pipe (unknown origin) was found in correct position for the SW corner of Lot 39.

Surveyed by: Peterson & Associates
8155 NW Mitchell Drive
Corvallis, Oregon 97330
Phone: 757-1794

REGISTERED
PROFESSIONAL
LAND SURVEYOR

OREGON
JULY 31, 1976
JIM S. PETERSON
1084



8168

8168