

8177

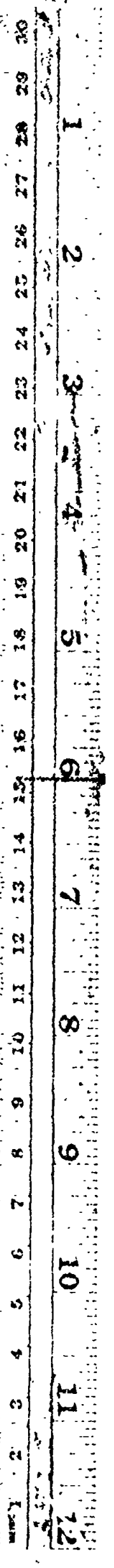
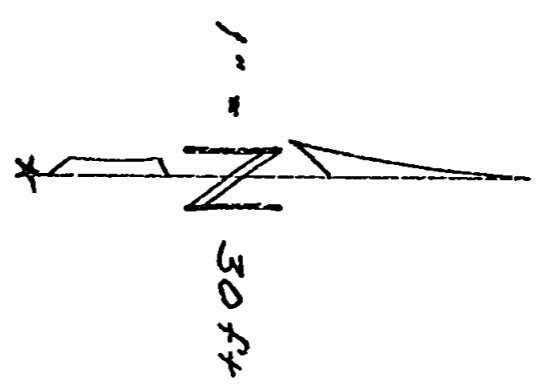
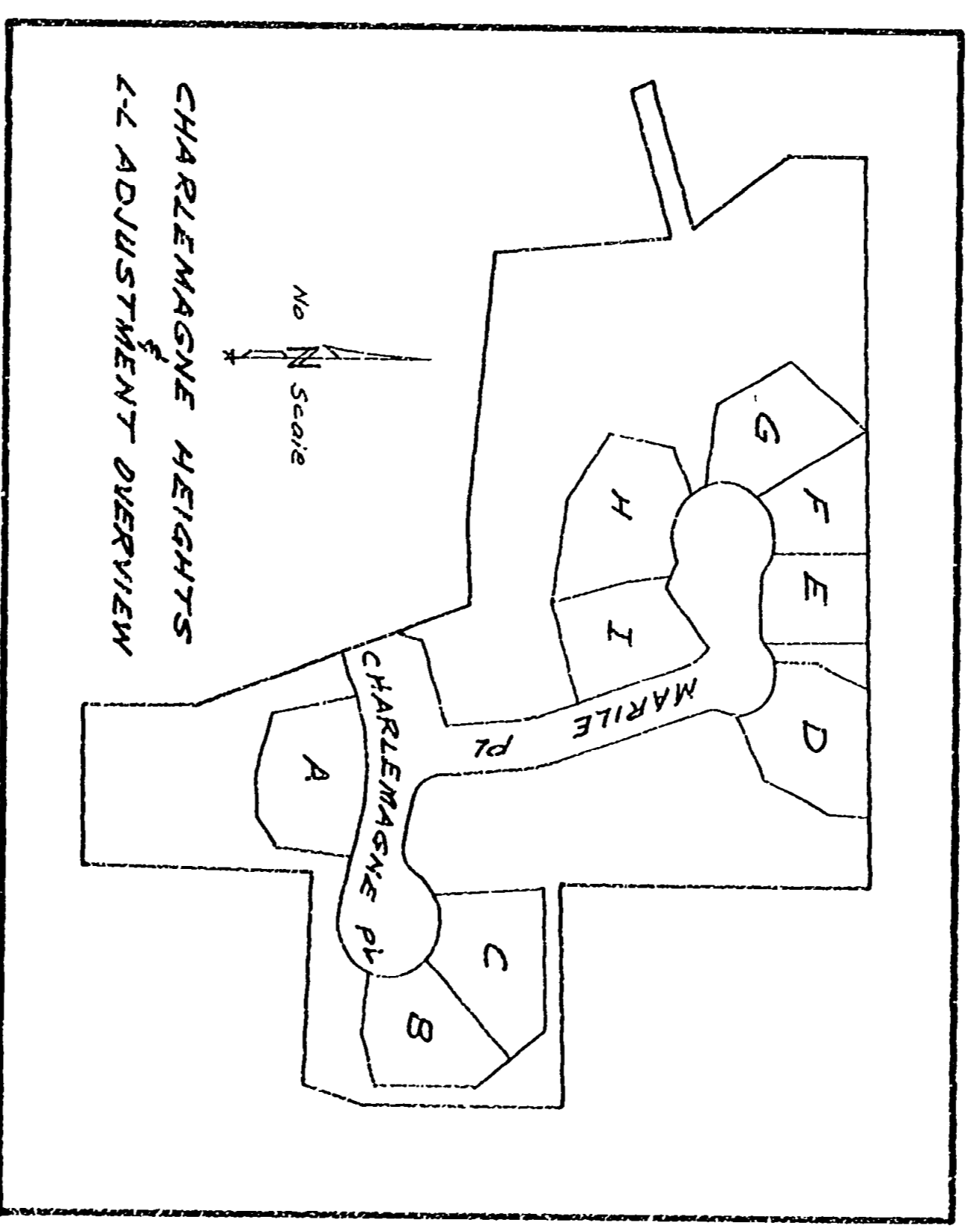
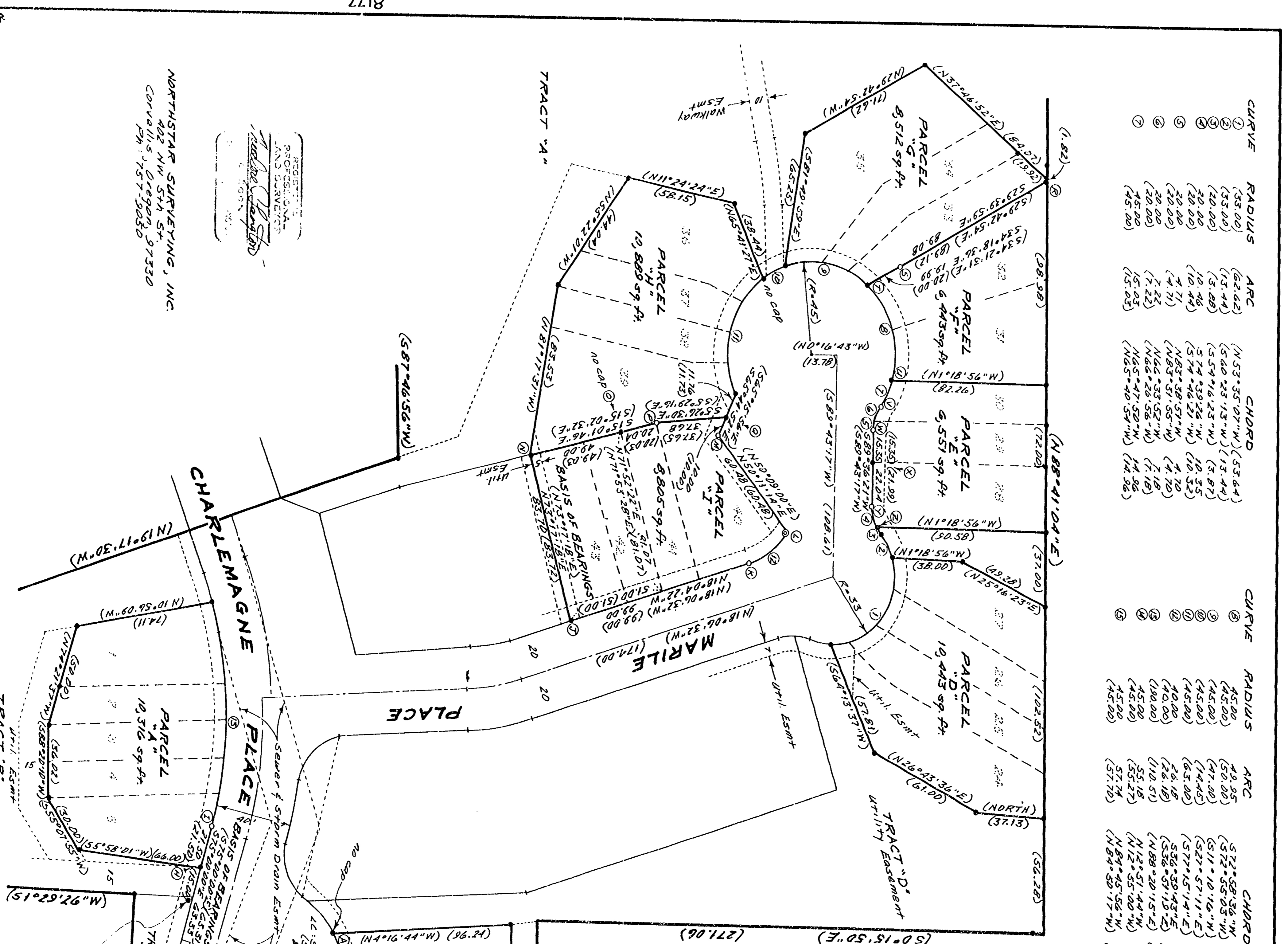
DRAWING NUMBER

DRAWING NUMBER

8177

DRAWING NUMBER

CURVE	RADIUS	ARC	CHORD	CURVE	RADIUS	ARC	CHORD
①	(53.00)	(62.42)	(153.33)	⑩	(45.00)	(53.15)	(52.58)
②	(53.00)	(62.42)	(153.33)	⑪	(45.00)	(53.15)	(52.58)
③	(53.00)	(62.42)	(153.33)	⑫	(45.00)	(53.15)	(52.58)
④	(53.00)	(62.42)	(153.33)	⑬	(45.00)	(53.15)	(52.58)
⑤	(53.00)	(62.42)	(153.33)	⑭	(45.00)	(53.15)	(52.58)
⑥	(53.00)	(62.42)	(153.33)	⑮	(45.00)	(53.15)	(52.58)
⑦	(53.00)	(62.42)	(153.33)	⑯	(45.00)	(53.15)	(52.58)
⑧	(53.00)	(62.42)	(153.33)	⑰	(45.00)	(53.15)	(52.58)
⑨	(53.00)	(62.42)	(153.33)	⑱	(45.00)	(53.15)	(52.58)



JAN 20 1989

30

**NARRATIVE**

This survey was done to comply with 114-400-5 and 114-400-9. The purpose of the consolidation was to place the parcels into a single parcel as shown. Said parcels were held to platted by the original survey. Missing monuments were replaced by monuments. The survey also required finding or setting all right-of-way breaks. City of Portland (Lots 1-15 and Lots 24-43) was a recorded survey line for this block and have a record distance of 200 feet. CALCULATION NOTES

① was re-established by projecting the line ②-③ the record distance from monument ④ is out of position.

② and ③ were re-established from the radius from of the old monument ④. The record distance ②-③ was corrected by holding the record radius ②-④. Monument ⑤ was set by distance ⑤-④ and ⑤-③. Monument ⑥ was set by distance ⑥-④ and ⑥-③. Monument ⑦ was set by distance ⑦-④ and ⑦-③. Monument ⑧ was set by distance ⑧-④ and ⑧-③. Monument ⑨ was set by distance ⑨-④ and ⑨-③. Monument ⑩ was set by distance ⑩-④ and ⑩-③. Monument ⑪ was set by distance ⑪-④ and ⑪-③. Monument ⑫ was set by distance ⑫-④ and ⑫-③. Monument ⑬ was set by distance ⑬-④ and ⑬-③. Monument ⑭ was set by distance ⑭-④ and ⑭-③. Monument ⑮ was set by distance ⑮-④ and ⑮-③. Monument ⑯ was set by distance ⑯-④ and ⑯-③. Monument ⑰ was set by distance ⑰-④ and ⑰-③. Monument ⑱ was set by distance ⑱-④ and ⑱-③. Monument ⑲ was set by distance ⑲-④ and ⑲-③. Monument ⑳ was set by distance ⑳-④ and ⑳-③. Monument ㉑ was set by distance ㉑-④ and ㉑-③. Monument ㉒ was set by distance ㉒-④ and ㉒-③. Monument ㉓ was set by distance ㉓-④ and ㉓-③. Monument ㉔ was set by distance ㉔-④ and ㉔-③. Monument ㉕ was set by distance ㉕-④ and ㉕-③. Monument ㉖ was set by distance ㉖-④ and ㉖-③. Monument ㉗ was set by distance ㉗-④ and ㉗-③. Monument ㉘ was set by distance ㉘-④ and ㉘-③. Monument ㉙ was set by distance ㉙-④ and ㉙-③. Monument ㉚ was set by distance ㉚-④ and ㉚-③. Monument ㉛ was set by distance ㉛-④ and ㉛-③. Monument ㉜ was set by distance ㉜-④ and ㉜-③. Monument ㉝ was set by distance ㉝-④ and ㉝-③. Monument ㉞ was set by distance ㉞-④ and ㉞-③. Monument ㉟ was set by distance ㉟-④ and ㉟-③. Monument ㊱ was set by distance ㊱-④ and ㊱-③. Monument ㊲ was set by distance ㊲-④ and ㊲-③. Monument ㊳ was set by distance ㊳-④ and ㊳-③. Monument ㊴ was set by distance ㊴-④ and ㊴-③. Monument ㊵ was set by distance ㊵-④ and ㊵-③. Monument ㊶ was set by distance ㊶-④ and ㊶-③. Monument ㊷ was set by distance ㊷-④ and ㊷-③. Monument ㊸ was set by distance ㊸-④ and ㊸-③. Monument ㊹ was set by distance ㊹-④ and ㊹-③. Monument ㊺ was set by distance ㊺-④ and ㊺-③. Monument ㊻ was set by distance ㊻-④ and ㊻-③. Monument ㊼ was set by distance ㊼-④ and ㊼-③. Monument ㊽ was set by distance ㊽-④ and ㊽-③. Monument ㊾ was set by distance ㊾-④ and ㊾-③. Monument ㊿ was set by distance ㊿-④ and ㊿-③.

**LEGEND**

Found monument: 5/8" iron rod, 1/2" hole, 3/4" height, 1/2" cap stamped "Surrell 1915" unless otherwise noted.

Set monument: 5/8" x 30" rebar with red plastic cap.

Set monument: 1/2" x 30" rebar with red plastic cap.

Set monument: 1/2" x 30" rebar with red plastic cap.

Record data from plot of Charlemagne Heights.

LOT CONSOLIDATION APPROVED

*Cynthia Spina* 10/18/88  
Planning Director date

*Neil Mann* 10/18/88  
City Engineer date

Benton County  
Surveyor's Office  
CS FILE NO. 8177  
PLAT DATE 10/18/88  
RE SIZE 20' x 30'

MINOR LAND PARTITION &  
LOT LINE ADJUSTMENT  
(114-98-5) (PDM-88-9)

for  
**RANDY and MELISSA BOYD et al.**

LOTS 1-5, 6-13 and 24-43  
CHARLEMAGNE HEIGHTS  
HERMAN LEWIS, D.L.C. NO. 47  
SW 1/4 SEC. 23, T15S, R5W, W4M  
CITY OF CORVALLIS,  
BENTON COUNTY, OREGON  
SEPTEMBER 5, 1988

NOTARIAL STATEMENT  
I, *Neil Mann*,  
City Engineer,  
do hereby certify that  
this is a true and correct  
copy of the original  
survey and plat.  
NORTHSTAR SURVEYING, INC.  
Corvallis, Oregon 97330  
PH: 325-9880