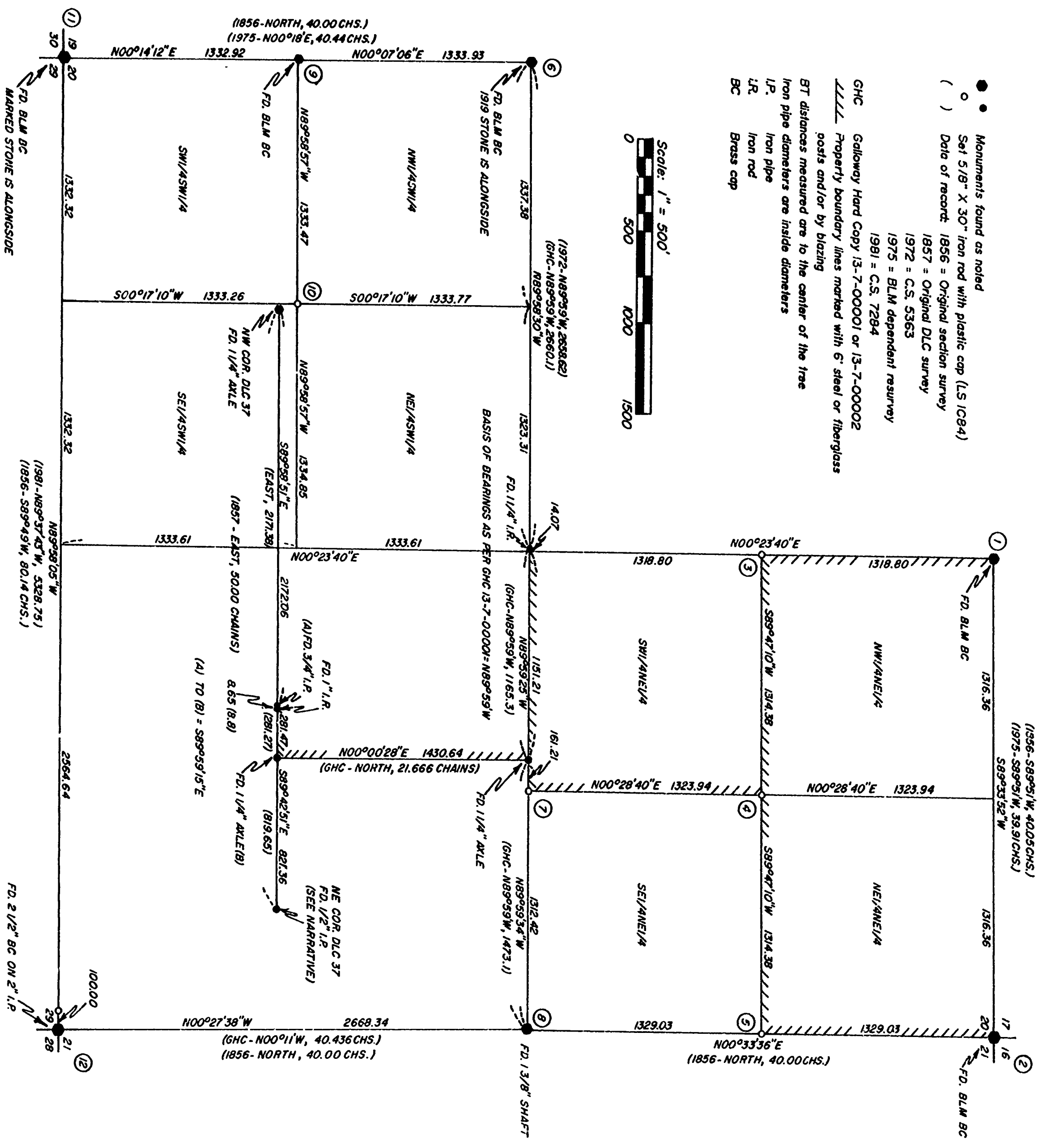
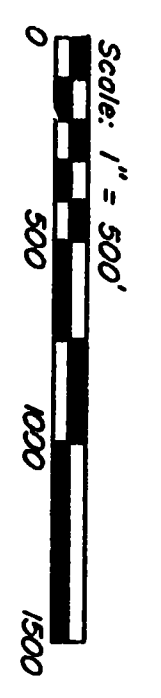


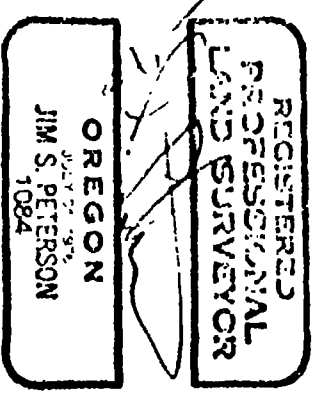
**RECORD OF SURVEY  
for SWANSON-SUPERIOR STARKER FORESTS, INC. & WILLAMETTE INDUSTRIES  
in SECTION 20, T13S, R7W, W1M,  
in the ALLEN HAYDON D.L.C. NO. 37  
BENTON COUNTY, OREGON  
OCTOBER 20, 1988**



- Monuments found as noted
- Set 5/8" X 30" iron rod with plastic cap (LS 1084)
- ( ) Date of record: 1856 = Original section survey  
1857 = Original DLC survey  
1972 = C.S. 5363  
1975 = BLM dependent resurvey  
1991 = C.S. 7284
- GHC Galloway Hard Copy 13-7-00001 or 13-7-00002  
Property boundary lines marked with 6" steel or fiberglass posts and/or by blazing
- BT distances measured are to the center of the tree  
Iron pipe diameters are inside diameters
- LP Iron pipe
- LR Iron rod
- BC Brass cap

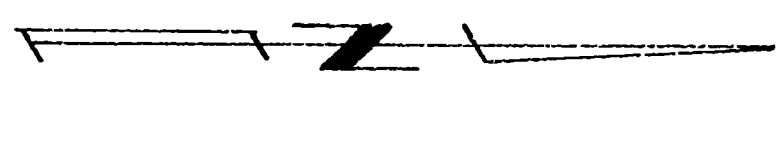


Surveyed by: Peterson & Associates  
8155 NW Mitchell Drive  
Corvallis, Oregon 97330  
Phone: 757-1794



- ⑫ SE Corner Section 20  
BT's found: 48" Fir Slump (N45°E, 185 Chains) Scribble visible - 1856  
24" Fir Slump (N45°44'E, 12.7 ft.) Scribble visible - 1976  
24" Fir (S45°50'E, 43.4 ft.) Healed face - 1976  
24" Fir (S42°22'W, 146.2 ft.) Healed face - 1976  
30" Fir (N70°04'W, 19.8 ft.) Healed face - 1976

- NARRATIVE**
- The purpose of this survey is to subdivide Section 20 in order to mark the property boundary lines and set the property corners as shown on this map. The original N1/4 corner, NW corner and S1/4 corners of Section 20 were searched for but not found. The N1/4 corner monument, as set by proportion by the BLM, was therefore occupied as the true corner position. The S1/4 corner position was computed at mid-point between the found original Section corners, but was not set.
- The East-West centerline is controlled by the 1/4 corners and by monument set along said centerline by GHC 13-7-00001. The North-South centerline is controlled only by the 1/4 corners. (GHC 13-7-00001 set a monument near the C1/4 corner position, but since that survey did not tie to the North or South 1/4 corners said monument was treated only as a point along the East-West centerline.
- The Basis of Bearings for this survey is from the W1/4 corner to the E1/4 corner as per GHC 13-7-00001.
- In 1911 W.C. Galloway reestablished the NE corner of DLC 37 from the original NW BT (he set a stone). He also marked a new BT to the SW. GHC 13-7-00001 then retraced the North line of DLC 37 and set monuments along said line. In 1955 a 1/2" iron pipe was set for the NE corner of DLC 37 from the windthrown stumps of both BT's (did not find stone). We have recovered the 1/2" iron pipe as shown on this plat. It appears from ties to monuments to the West that this 1/2" iron pipe is somewhat out of position. This is probably due to the difficulty in accurately reestablishing the corner from the large windthrown stumps. We searched the area for Galloway's stone, but did not find it. I feel that the monuments to the West still control the North line of the DLC, and that the NE corner of the DLC should be repositioned to fit its record position in relation to said monuments. This would put the DLC corner 4.3 feet, N23°27'W of the 1/2" iron pipe. (The record data along the DLC line is as per GHC 13-7-00001).
- This survey was performed using a system of closed traverses (with a 10" total station).
- BEARING TREE NOTES**
- ① 1/4 Corner Sections 17 & 20  
BT's found: 20" Fir, (N27°W, 35 k.s.) Healed face - 1975  
16" Fir, (S36°E, 24 k.s.) Healed face - 1975
  - ② NE Corner Section 20  
BT's found: 20" Fir Slump, (S30°E, 68 k.s.) Scribble visible - 1856  
14" Fir, (N09°E, 30 k.s.) Healed face - 1975  
12" Fir, (S58°E, 5 k.s.) Healed face - 1975  
16" Fir, (S49°W, 55 1/2 k.s.) Healed face - 1975  
26" Fir, (N40°W, 40 1/2 k.s.) Healed face - 1975
  - ③ NW Corner Section 20  
BT's set: 22" Fir, N06°E, 6.0 ft. Scribble: CN1/6 S20 BT  
24" Fir, S65°W, 18.6 ft. Scribble: CN1/6 S20 BT
  - ④ NE1/6 Corner Section 20  
BT's set: 24" Fir, S54°W, 2.3 ft. Scribble: NE1/6 S20 BT  
12" Fir, N67°E, 15.6 ft. Scribble: NE1/6 S20 BT
  - ⑤ NW1/6 Corner Sections 20 & 21  
BT's set: 25" Fir, S17°W, 6.2 ft. Scribble: NW1/6 S20 BT  
20" Fir, S46°E, 8.5 ft. Scribble: NW1/6 S21 BT
  - ⑥ 1/4 Corner Sections 19 & 20  
BT's found: 60" Fir, (N70°W, 12 k.s.) Healed face - 1856  
24" Fir, (S35 1/4°E, 31 1/2 k.s.) Healed face - 1975  
18" Fir, (N18 1/2°W, 25 1/2 k.s.) Healed face - 1975
  - ⑦ CE1/6 Corner Section 20  
BT's set: 18" Fir, S52°E, 10.4 ft. Scribble: CE1/6 S20 BT  
22" Fir, S65°W, 12.5 ft. Scribble: CE1/6 S20 BT
  - ⑧ 1/4 Corner Sections 20 & 21  
BT's found: 20" Fir, (S68°40'E, 15.2 k.s.) Healed face - 1919  
22" Fir, (S60°20'E, 17.0 k.s.) Healed face - 1919  
26" Fir, (N36°04'W, 22.9 k.s.) Healed face - 1919
  - ⑨ S1/6 Corner Sections 19 & 20  
BT's found: 12" Fir, (N80°E, 13 1/2 k.s.) Healed face - 1975  
20" Fir Uprout, (N70 1/2°W, 57 1/2 k.s.) Healed face - 1975
  - ⑩ SW1/6 Corner Section 20  
BT's set: 40" Maple Cluster, N57°W, 41.6 ft. Scribble: SW1/6 S20 BT  
NW Corner DLC 37 bears S18°44'37"E, 102.30 ft.
  - ⑪ SW Corner Section 20  
BT's found: 48" Fir Slump, (S30°W, 35 k.s.) Healed face - 1855  
36" Fir, (N50 1/2°E, 131 k.s.) Healed face - 1975  
48" Cedar, (S04°E, 107 k.s.) Healed face - 1975  
12" Maple, (S55°W, 29 1/2 k.s.) Healed face - 1975  
38" Maple Uprout, (N02 1/2°W, 57 k.s.) - 1975



Benton County  
Surveyor's Office  
8198  
S.W. Pine Hill  
12-9-1988  
18" x 24"

8198  
12/9/1988