

8233  
2-16-89

Benton County  
Surveyor's Office  
C. J. Liesenfelt  
2-16-1989  
18524

# RECORD OF SURVEY / MINOR LAND PARTITION FOR LEOLA RICHARDS

LOCATED IN NW 1/4 OF SECTION 36, TOWNSHIP  
11 SOUTH, RANGE 6 WEST, WILLAMETTE MERIDIAN  
AND IN A PORTION OF THE WILLIAM WYATT  
DLC NO. 40  
BENTON COUNTY, OREGON

FEBRUARY 13, 1989

SCALE: 1" = 300'

## NARRATIVE

### PURPOSE

THE PURPOSE OF THIS SURVEY IS TO MONUMENT PARCELS "C" AND "D" IN CONJUNCTION WITH A MINOR LAND PARTITION (FILE NUMBER PC-88-26 AND PC-88-27 OF THE BENTON COUNTY DEVELOPMENT DEPARTMENT).

### BASIS OF BEARING

THE BASIS OF BEARINGS FOR THE NEW LINES ESTABLISHED IS THE NORTHEAST LINE OF PARCEL "A" AS MONUMENTED IN COUNTY SURVEY NO. 7211 AND RECOVERED IN THIS SURVEY.

### BOUNDARY DETERMINATION

THE NEW PROPERTY LINES WERE ESTABLISHED BY CLIENT REQUEST IN CONJUNCTION WITH GUIDELINES RECOMMENDED BY THE BENTON COUNTY DEVELOPMENT DEPARTMENT. MONUMENTS RECOVERED ALONG THE NORTH, NORTHEAST AND EAST LINES OF PARCEL "A" WERE HELD AS FOUND EXCEPTING THE SOUTHEAST CORNER OF PARCEL "A" WHICH WAS BADLY BENT.

EQUIPMENT USED BUT NOT LIMITED TO INCLUDED A WILD T-16 THEODOLITE AND DIAL E.D.M.

### APPROVAL

PLANNING OFFICIAL \_\_\_\_\_

DATE \_\_\_\_\_

REGISTERED  
PROFESSIONAL  
LAND SURVEYOR

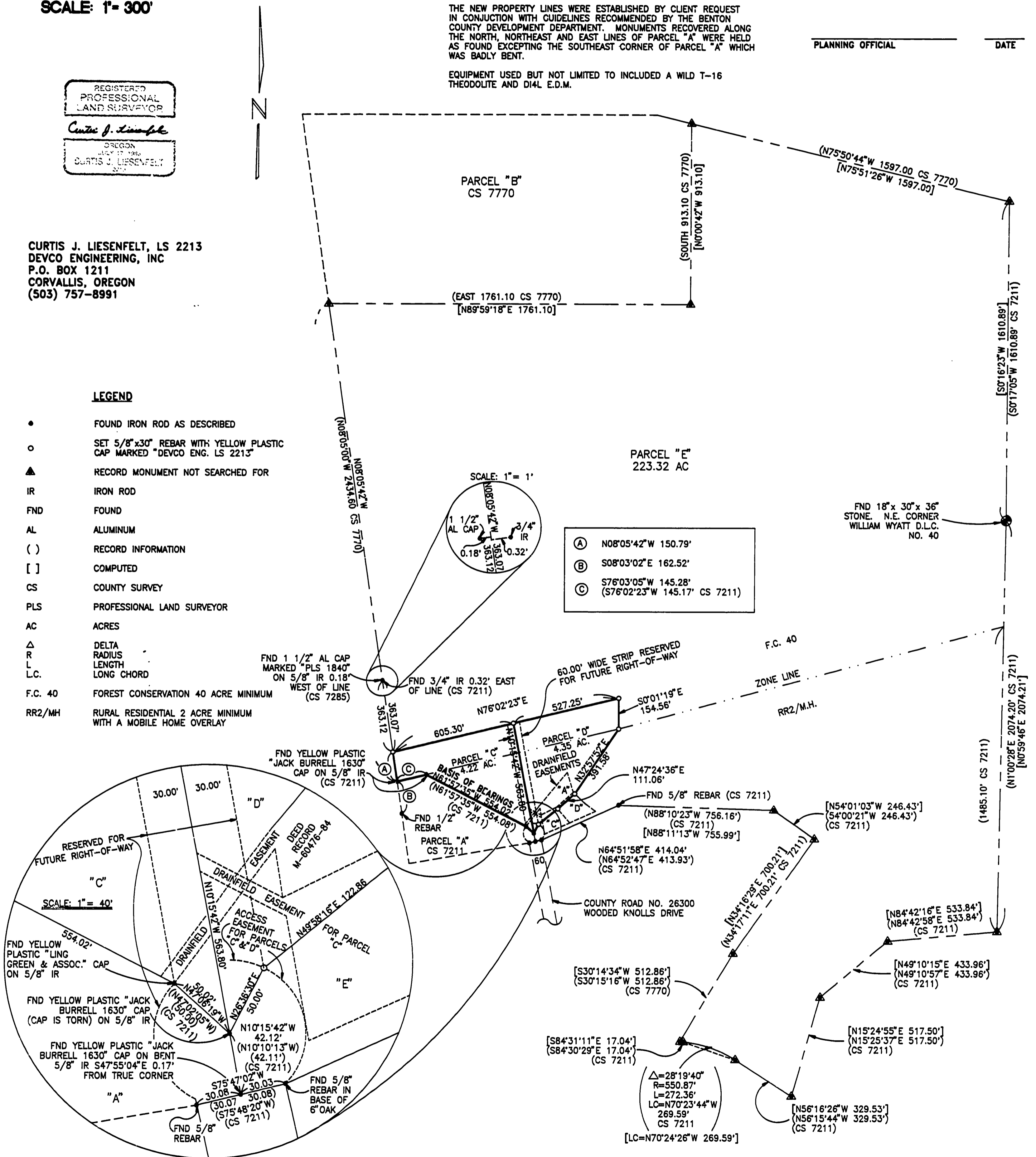
*Curtis J. Liesenfelt*

OREGON  
CURTIS J. LIESENFELT  
2011

CURTIS J. LIESENFELT, LS 2213  
DEVCO ENGINEERING, INC  
P.O. BOX 1211  
CORVALLIS, OREGON  
(503) 757-8991

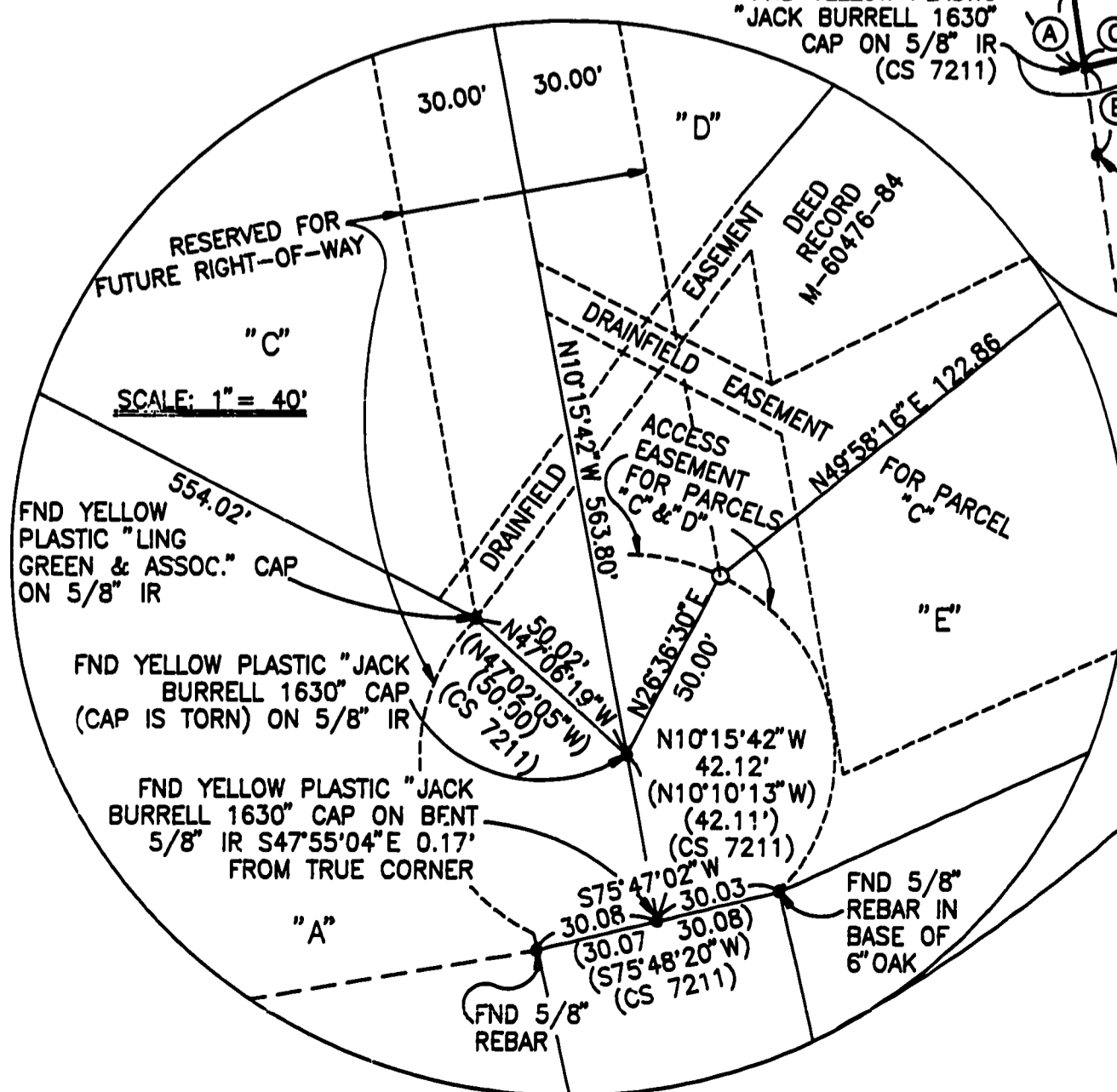
### LEGEND

- FOUND IRON ROD AS DESCRIBED
- SET 5/8" x 30" REBAR WITH YELLOW PLASTIC CAP MARKED "DEVCO ENG. LS 2213"
- ▲ RECORD MONUMENT NOT SEARCHED FOR
- IR IRON ROD
- FND FOUND
- AL ALUMINUM
- ( ) RECORD INFORMATION
- [ ] COMPUTED
- CS COUNTY SURVEY
- PLS PROFESSIONAL LAND SURVEYOR
- AC ACRES
- Δ DELTA RADIUS
- R RADIUS
- L LENGTH
- L.C. LONG CHORD
- F.C. 40 FOREST CONSERVATION 40 ACRE MINIMUM
- RR2/MH RURAL RESIDENTIAL 2 ACRE MINIMUM WITH A MOBILE HOME OVERLAY



SCALE: 1" = 1'

- (A) N08°05'42"W 150.79'
- (B) S08°03'02"E 162.52'
- (C) S76°03'05"W 145.28'  
(S76°02'23"W 145.17' CS 7211)



B233