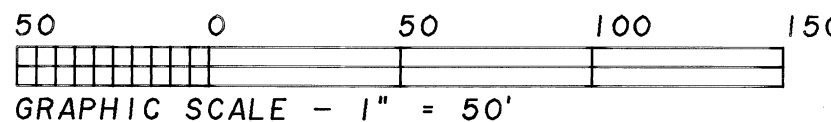


8251

8251

8251 4/5/89

CURVE	RADIUS	LENGTH	DELTA	CHORD	CH. BEARING
1	65.00'	96.08'	84°41'20"	87.57'	N 33°13'57" E
2	65.00'	58.06'	51°10'48"	56.15'	N 34°42'07" W
3	65.00'	61.81'	54°29'14"	59.51'	N 87°32'08" W
4	65.00'	11.41'	10°03'21"	11.39'	S 60°11'35" W
5	65.00'	88.85'	78°19'01"	82.09'	S 16°00'24" W



Benton County  
Surveyor's Office

C.S. FILE NO 8251  
FILING DATE 4-5-1989  
FILE SIZE 15" x 18"

North line of Price  
Fuller DLC No. 37

BASIS OF BEARINGS  
( S 88°51'50" E ) ( 441.30 ) (A) & (B)  
S 88°51'50" E 441.18'

LEGEND

- ..... Found monument: 5/8" iron rod.
- ..... Set monument: 5/8" x 30" iron rod with red plastic cap stamped "NORTHSTAR PLS 1823"
- ( ) ..... Record data from the reference shown below:
  - (A) - CS 7382
  - (B) - Plat of "Second Add'n to Westwood Hills Estates".
- (R) ..... Radial Bearing

NARRATIVE

This survey complies with LD 89-19. It monuments the adjusted Lot Line as shown. The new line exchanges equal areas of land between the two Tax Lots. The radius point of the Cul-d-Sac was created by distance-distance intersection from the found monuments at [6] and [7]. The monument at [8] also fit this radius point nicely but its origin is not known.



NORTHSTAR SURVEYING, INC.  
402 NW 5th St.  
Corvallis, Oregon, 97330  
PH: 757-9050

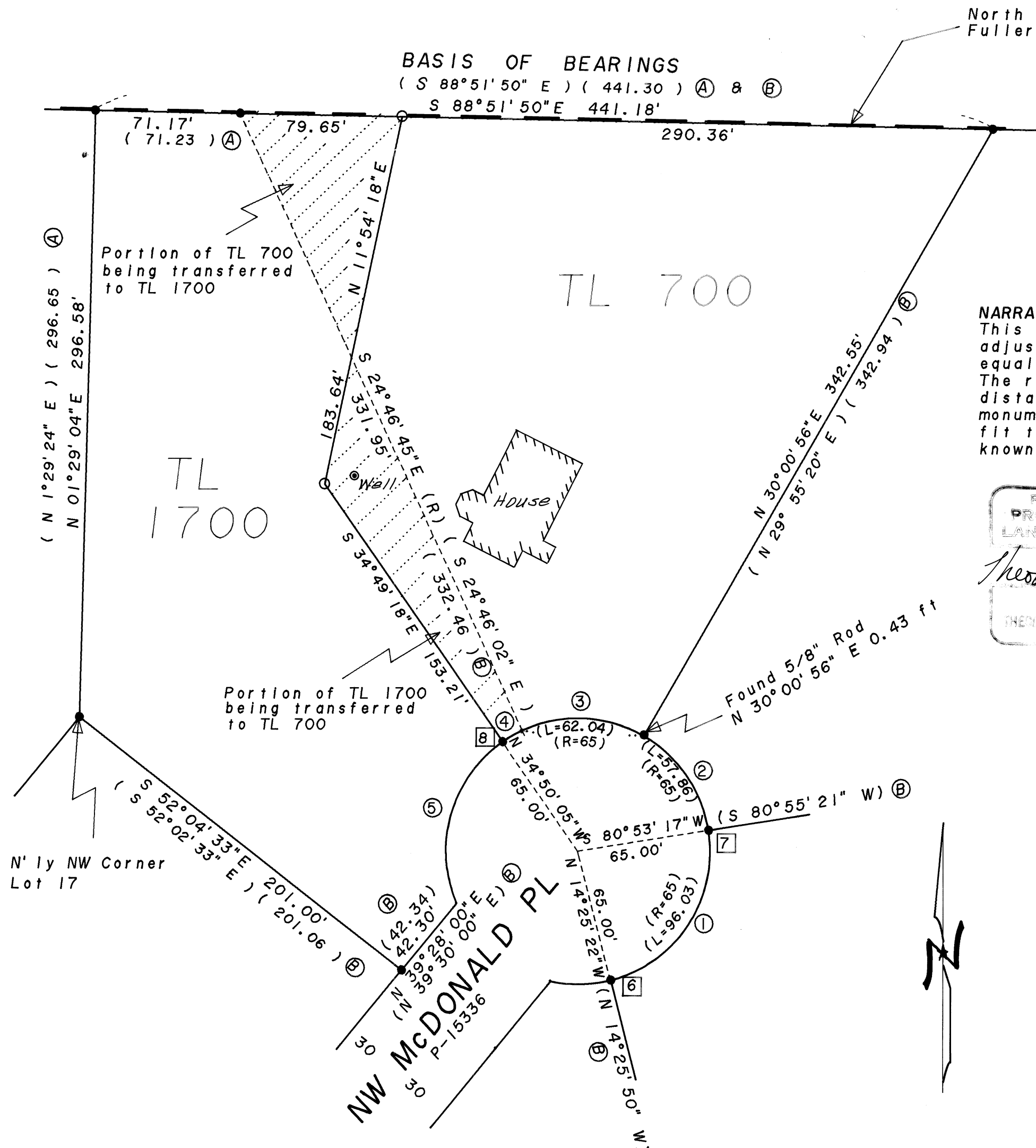
LOT LINE ADJUSTMENT APPROVED 4/5/89  
LD 89-19

*Jay Munsterman* 9/24/90  
planning official date

LOT LINE ADJUSTMENT SURVEY  
for  
PHIL FLEMMING

on  
TAX LOT 1700, MAP 10-5-36DC  
TAX LOT 700, MAP 10-5-36DD  
LOTS 15 & 16, BLOCK 2  
SECOND ADD'N TO WESTWOOD HILLS EST.  
in  
PRICE FULLER DLC NO. 37  
SE 1/4 SEC 36, T10S, R5W, W.M.  
BENTON COUNTY, OREGON

MARCH 1, 1989



8251