

RECORD OF SURVEY
FOR
BENTON COUNTY

LOCATED IN THE DAVID HENDERSON DONATION LAND CLAIM NO. 46, WYMAN ST. CLAIM NO. 47, NORRICE P. NEWTON DONATION LAND CLAIM NO. 44, ISAAC NEWTON DONATION LAND CLAIM NO. 37, HENRY PEHLAND DONATION LAND CLAIM NO. 45, AND THE WILLIAM WYAT DONATION LAND CLAIM NO. 48 IN SECTIONS 1, 12, AND 13 IN TOWNSHIP 12 SOUTH, RANGE 6 WEST AND THE NORRICE P. NEWTON DONATION LAND CLAIM NO. 72, ISAAC NEWTON DONATION LAND CLAIM NO. 70, AND THE LUKE MULKEY DONATION LAND CLAIM NO. 37 IN SECTION 6, TOWNSHIP 12 SOUTH, RANGE 5 WEST AND THE LUKE MULKEY DONATION LAND CLAIM NO. 37 IN SECTION 6, TOWNSHIP 12 SOUTH, RANGE 5 WEST AND THE LUKE MULKEY DONATION LAND CLAIM NO. 58 AND THE JOHNSON MULKEY DONATION LAND CLAIM NO. 57 IN SECTIONS 31 AND 32, TOWNSHIP 11 SOUTH, RANGE 5 WEST, WILLAMETTE MERIDIAN, BENTON COUNTY, OREGON.

MARCH 10, 1989

NARRATIVE

BACKGROUND AND PURPOSE

BENTON COUNTY IS IN THE PROCESS OF DEVELOPING A COUNTY WIDE GEOGRAPHIC INFORMATION SYSTEM (GIS). ONE OF THE ESSENTIAL PARTS OF A GIS IS A COORDINATE GRID SYSTEM TO BE USED AS THE BASE LAYER FOR THE ENTIRE GIS.

BENTON COUNTY AND THE UNITED STATES DEPARTMENT OF THE INTERIOR, BUREAU OF LAND MANAGEMENT (BLM) ARE WORKING JOINTLY IN DEVELOPING STATE PLANE COORDINATES FOR ALL GOVERNMENT CORNERS IN BENTON COUNTY. BENTON COUNTY CONTRACTED DAVID EVANS AND ASSOCIATES, INC. TO ESTABLISH ELEVEN FIRST ORDER CONTROL POINTS. THESE POINTS WERE ESTABLISHED BY USING THE STATE-OF-THE-ART CONTROL SURVEYING TECHNOLOGY CALLED GLOBAL POSITIONING SYSTEM (GPS). THESE POINTS ARE IDENTIFIED AS GPS CONTROL POINTS AS SHOWN.

THE OREGON STATE PLANE COORDINATE VALUES GENERATED BY BLM ARE COMPUTED COORDINATES ESTABLISHED FROM THE BEST AVAILABLE EVIDENCE ON FILE IN THE RECORDS OF THE COUNTY SURVEYOR, SUCH AS SURVEYS, GOVERNMENT NOTES, ETC. THE PURPOSE OF THIS SURVEY IS TO TIE THE GOVERNMENT CORNERS AND ESTABLISH ACCURATE STATE PLANE COORDINATE VALUES. ON THESE GOVERNMENT CORNERS, USING THE ESTABLISHED GPS CONTROL POINTS, THE STATE PLANE COORDINATE VALUES WILL BE INCORPORATED INTO THE BENTON COUNTY COORDINATE GRID SYSTEM.

COORDINATE SYSTEM

THE COORDINATE SYSTEM USED FOR THIS SURVEY IS THE LAMBERT CONFORMAL CONIC PROJECTION OREGON NORTH ZONE (NAD 27). ALL BEARINGS AND DISTANCES SHOWN ON THIS SURVEY ARE GRID BEARINGS AND GRID DISTANCES UNLESS OTHERWISE NOTED. THE COMBINED FACTOR SHOWN FOR EACH LINE IS THE COMBINED SEA LEVEL FACTOR AND SCALE FACTOR.

EQUIPMENT USED AND FIELD PROCEDURE

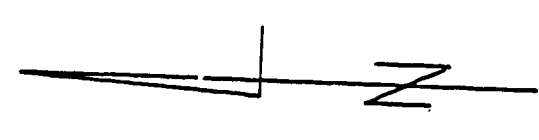
THE EQUIPMENT USED FOR THIS SURVEY WAS A WILD T-2002 AND DISS. ALL TRAVERSE POINTS ARE BRASS CAPS. 1/2" IRON RODS UNLESS OTHERWISE SHOWN. ALL TRAVERSE POINTS WERE RIN FROM TRIPPOD TO TRIPPOD.

BASIS OF BEARINGS

THE BASIS OF BEARINGS FOR THIS SURVEY WAS DETERMINED FROM THE BRASS CAP AT GPS STATION "CHAP", CONTROL POINT NO. 1, ALONG THE EAST SIDE OF FERN ROAD, COUNTY ROAD NO. 26250, AND THE BRASS CAP AT GPS STATION "BALD", CONTROL POINT NO. 17 ON TOP OF BALD HILL.

No.	Direction	Length	Combined Factor
1	N 31°14.5'E	848.72	0.99994320
2	N 32°6'39.7"E	853.36	0.99994320
3	N 134°31.7"E	800.53	0.99994321
4	N 6°05'39.7"E	603.72	0.99994326
5	S84°54'26.4"E	761.62	0.99994343
6	N 331°12.5"E	1159.74	0.99994312
7	S86°14'43.1"E	780.07	0.99994343
8	S86°20'50.9"E	780.91	0.99994343
9	N35°51'51.2"E	1033.52	0.99994320
10	N 73°9'16.3"E	743.30	0.99994323
11	N01°52'00.9"E	1012.87	0.99994316
12	N 143°53.2"E	1363.17	0.99994308
13	N34°15'14.3"E	695.76	0.99994327
14	N47°10'25.7"E	2957.44	0.99994287
15	N58°32'55.2"E	3316.71	0.99994294
16	N78°28'41.3"E	363.79	0.99994340
17			

Benton County
Surveyor's Office
CS File # 8274
PLUMB DATE 6-19-1989
FILE SIZE 24 X 36



GPS STATION "BALD"
FOUND 3 1/2" BRASS CAP ON 3" IP 3" ABOVE GROUND
LATITUDE : N 43°35'56.0065"
LONGITUDE : W 123°20'01.5160"
ELEVATION : 755.40
COMBINED FACTOR : 0.99991345
NORTHING : 340721.0228
EASTING : 1281665.6986

SW COR. JOHNSON MULKEY DLC 67
FD 1" IRON PIPE
PER CORNER RESTORATION # 3445
NORTHING : 240899.1045
EASTING : 1281036.8605

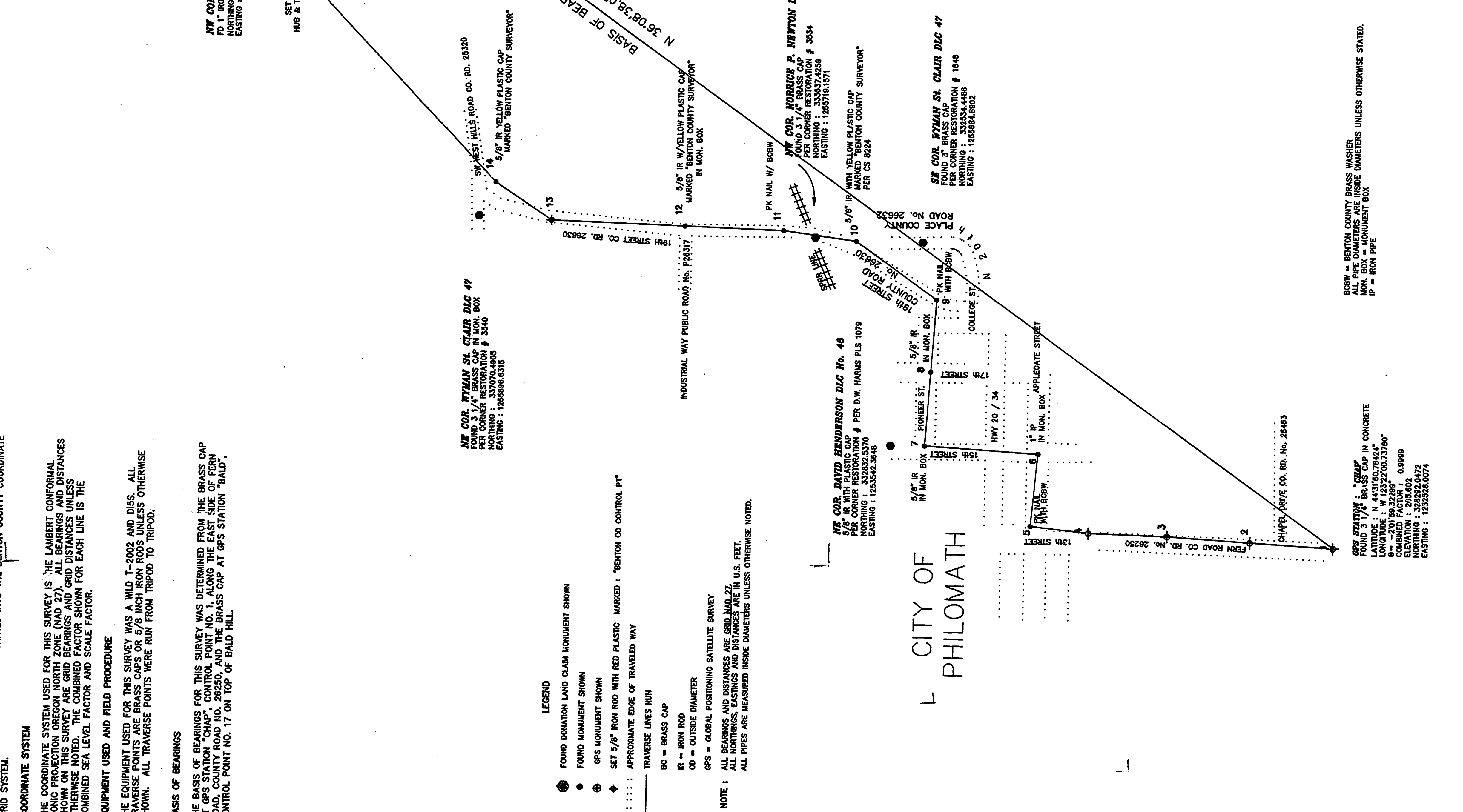
NW COR. ABIAATHER NEWTON DLC No. 48
FD 1" IRON PIPE
NORTHING : 1258689.2887
EASTING : 339131.6320

NW COR. ISAAC NEWTON DLC No. 70
FD 1" IRON PIPE
NORTHING : 1258689.2887
EASTING : 339868.2156

NW COR. STILAS NEWCOMB DLC 51
FOUND 3" BRASS CAP
PER CORNER RESTORATION # 3548
NORTHING : 333451.8182
EASTING : 1261022.1534

REGISTERED
PROFESSIONAL
LAND SURVEYOR
DANNA L. INGRAM-FEHRBACH
JULY 16, 1982
DANNA L. INGRAM-FEHRBACH
1985

BENTON COUNTY PUBLIC WORKS 360 S.W. ALBERT AVENUE CORVALLIS, OREGON 97333	
"CHAP" TO "BALD" CONTROL SURVEY	
COUNTY SURVEYOR : DANNA INGRAM-FEHRBACH	PROJECT MANAGER : RAY WILSON
SCALE : 1" = 600'	DRAWN BY : R J ZIMMER
DATE : MARCH 25, 1989	FILE NAME : CHAPBALD
REVISED : 5-15-89	SHEET 1 OF 1



- LEGEND**
- FOUND DONATION LAND CLAIM MONUMENT SHOWN
 - FOUND MONUMENT SHOWN
 - ⊕ GPS MONUMENT SHOWN
 - ⊕ SET 5/8" IRON ROD WITH RED PLASTIC MARKED : "BENTON CO CONTROL PT"
 - ⋯ APPROXIMATE EDGE OF TRAVELED WAY
 - TRAVERSE LINES RUN
 - BC = BRASS CAP
 - IR = IRON ROD
 - OB = OUTSIDE DIAMETER
 - GPS = GLOBAL POSITIONING SATELLITE SURVEY
- NOTE :** ALL BEARINGS AND DISTANCES ARE GRID NAD 27. ALL NORTHINGS, LONGITUDES AND DISTANCES ARE IN U.S. FEET. ALL PIPES ARE MEASURED INSIDE DIAMETERS UNLESS OTHERWISE NOTED.

GPS STATION "CHAP"
FOUND 3 1/2" BRASS CAP IN CONCRETE
LATITUDE : N 43°35'56.0065"
LONGITUDE : W 123°20'01.5160"
ELEVATION : 755.40
COMBINED FACTOR : 0.9999
NORTHING : 340721.0228
EASTING : 1281665.6986

BCBW = BENTON COUNTY BRASS WASHER
ALL PIPE DIAMETERS ARE INSIDE DIAMETERS UNLESS OTHERWISE STATED.
IP = IRON PIPE