

DRAWING NUMBER  
**8286**

PLAN HOLD CORPORATION • IRVINE, CALIFORNIA  
RECORDER BY NUMBER 075AR  
POSITION EDGE OF PRINT ON THIS LINE

DRAWING NUMBER

PLAN HOLD CORPORATION • IRVINE, CALIFORNIA  
RECORDER BY NUMBER 075AR  
POSITION EDGE OF PRINT ON THIS LINE

DRAWING NUMBER

PLAN HOLD CORPORATION • IRVINE, CALIFORNIA  
RECORDER BY NUMBER 075AR  
POSITION EDGE OF PRINT ON THIS LINE

DRAWING NUMBER  
**8286**

PLAN HOLD CORPORATION • IRVINE, CALIFORNIA  
RECORDER BY NUMBER 075AR  
POSITION EDGE OF PRINT ON THIS LINE

8286 6/20

# RECORD OF SURVEY

for KOCHIS LAND COMPANY

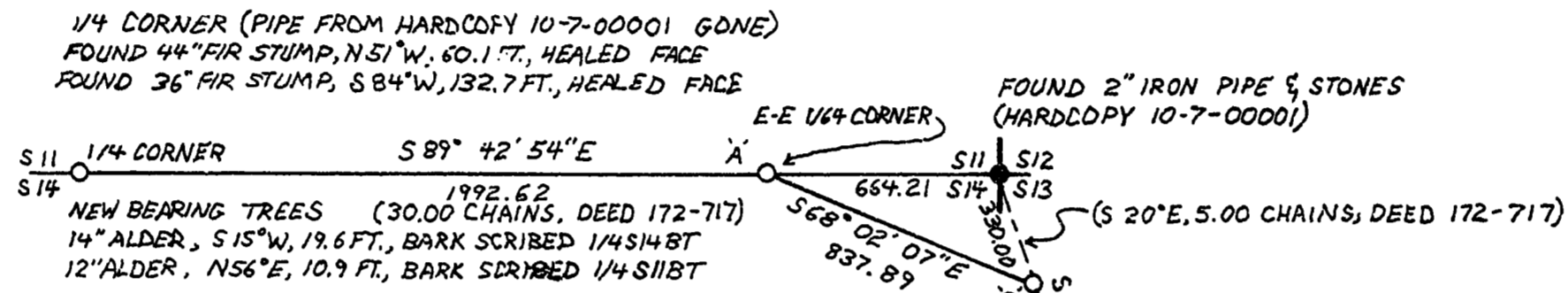
in the NE 1/4 Section 14 and the W 1/2 Section 13,

T.10S., R.7W., W.M., Benton County, Oregon

June 12, 1989

**Benton County  
Surveyor's Office**

C.A. FILE NO. 8286  
FILING DATE 6/20/1989  
FILE SIZE 18" x 24"



### LEGEND

- SET 5/8" X 30" IRON ROD WITH YELLOW PLASTIC CAP MARKED "SPRINGER LS 1102"
- FOUND MONUMENT AS NOTED
- ( ) DATA OF RECORD

### NARRATIVE

THIS SURVEY WAS DONE TO MONUMENT THE CORNERS AS SHOWN HEREON, BASED ON DEEDS RECORDED AS BOOK 187, PAGE 33, BOOK 172, PAGE 717 AND BOOK 172, PAGE 719, BENTON COUNTY DEED RECORDS. THE 1/4 CORNER OF SECTIONS 11 AND 14 WAS SET AT RECORD BEARING AND DISTANCE FROM THE BEARING TREES SHOWN ON HARDCOPY 10-7-00001. POINT 'A' IS SET AT PROPORTIONATE POSITION ON THE SECTION LINE. DEEDS CALL POINT 'A' 10 CHAINS WEST OF THE SECTION CORNER, 30 CHAINS EAST OF THE 1/4 CORNER, AND THE CORNER OF THE E 1/2 OF THE E 1/2 OF THE SE 1/4 OF SECTION 11. POINTS 'B' AND 'C' ARE AT DEED RECORD BEARING AND DISTANCE FROM THE SECTION CORNER. POINT 'D' IS WEST OF THE SW CORNER OF D.L.C. NO. 49 AND ON THE WEST LINE OF LOT 4 AS DESCRIBED BY CORRECTION DEED BOOK 187, PAGE 33. BASIS OF BEARINGS IS A SOLAR OBSERVATION. THE SURVEY WAS PERFORMED WITH A 10-SECOND READING MANUAL TOTAL STATION. CORNERS WERE TIED FROM CLOSED TRAVERSES. PIPE DIAMETERS ARE INSIDE MEASUREMENT.

