

DRAWING NUMBER
8300

PLAN HOLD CORPORATION • IRVINE, CALIFORNIA
REORDER BY NUMBER 075AR
POSITION CODE OF PRINT ON THIS DATE

DRAWING NUMBER
8300

PLAN HOLD CORPORATION • IRVINE, CALIFORNIA
REORDER BY NUMBER 075AR
POSITION CODE OF PRINT ON THIS DATE

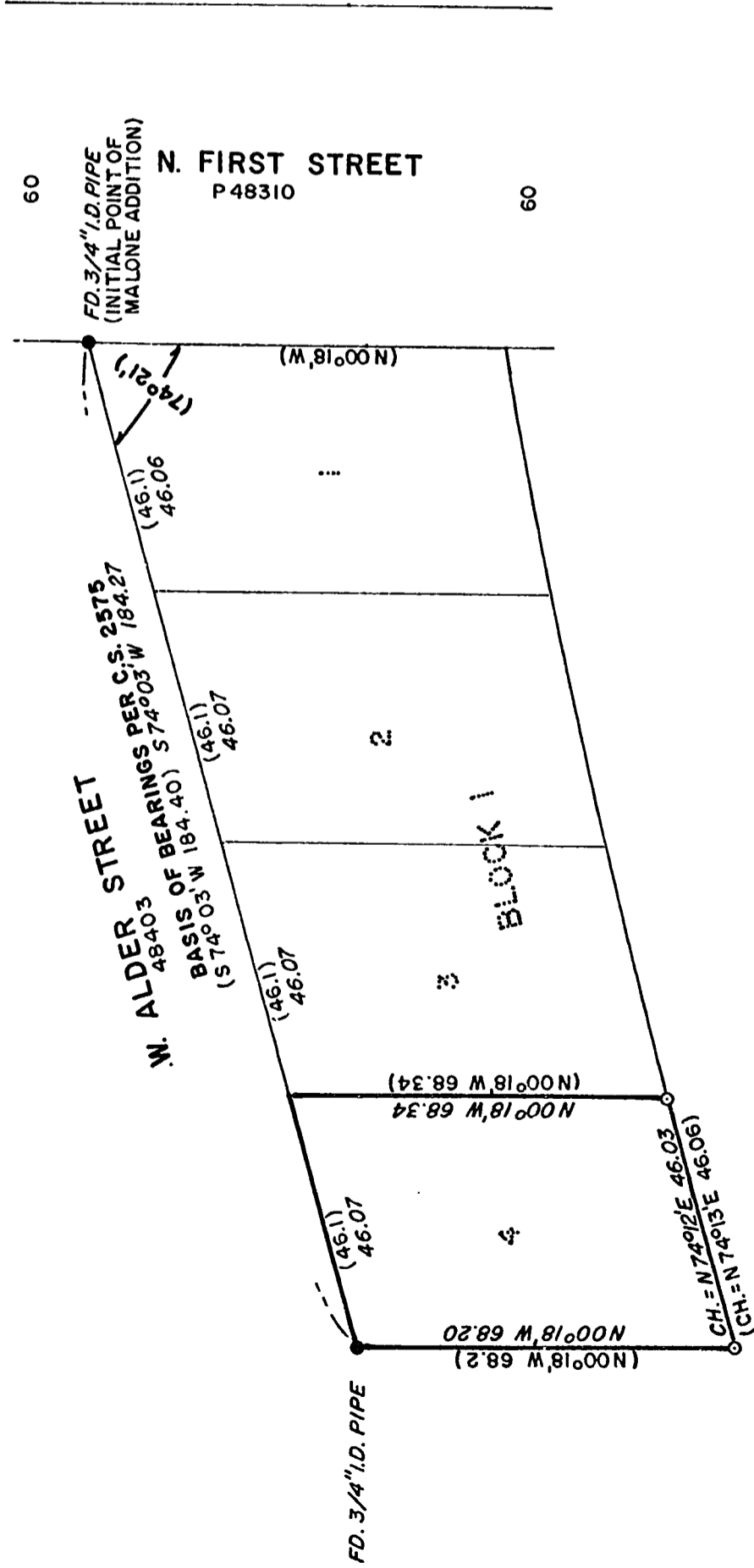
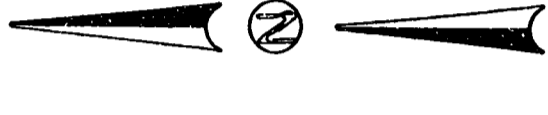
8300
7-20-1989

MAP OF SURVEY
for
ROLF HAGEN
JULY 14, 1989

BLOCK 1, MALONE ADDITION TO ALSEA
S.E. 1/4 SECTION 1, T.14S., R.8W., W.M.
BENTON COUNTY, OREGON.

LEGEND

- MONUMENT FOUND, TYPE NOTED
- SET 5/8" X 30" IRON ROD WITH YELLOW PLASTIC CAP STAMPED "D.W. HARMS, P.L.S. 1079"
- () INFORMATION OF/OR CALCULATED FROM C.S. 2575 I.D. INNER DIAMETER



NARRATIVE

THE PURPOSE OF THIS SURVEY IS TO LOCATE THE N.W., S.W. & S.E. CORNERS OF LOT 4, BLOCK 1, MALONE ADDITION TO ALSEA.

I HELD THE FOUND N.E. & N.W. BLOCK CORNER MONUMENTS IN POSITION FOR CONTROL THEN HELD C.S. 2575 DATA FOR LOT 4 TO REPLACE THE S.E. & S.W. CORNERS OF LOT 4.

DARRYL W. HARMS, P.L.S.
P.O. BOX 1051
CORVALLIS, OR. 97339
PHONE: (503) 758-5579

REGISTERED
PROFESSIONAL
LAND SURVEYOR

Darryl W. Harms

OREGON
JULY 30, 1976
DARRYL W. HARMS
1079

Benton County
Surveyor's Office

C.S. FILE NO. **8300**
FILING DATE **7-20-1989**
FILE SIZE **11" x 17"**