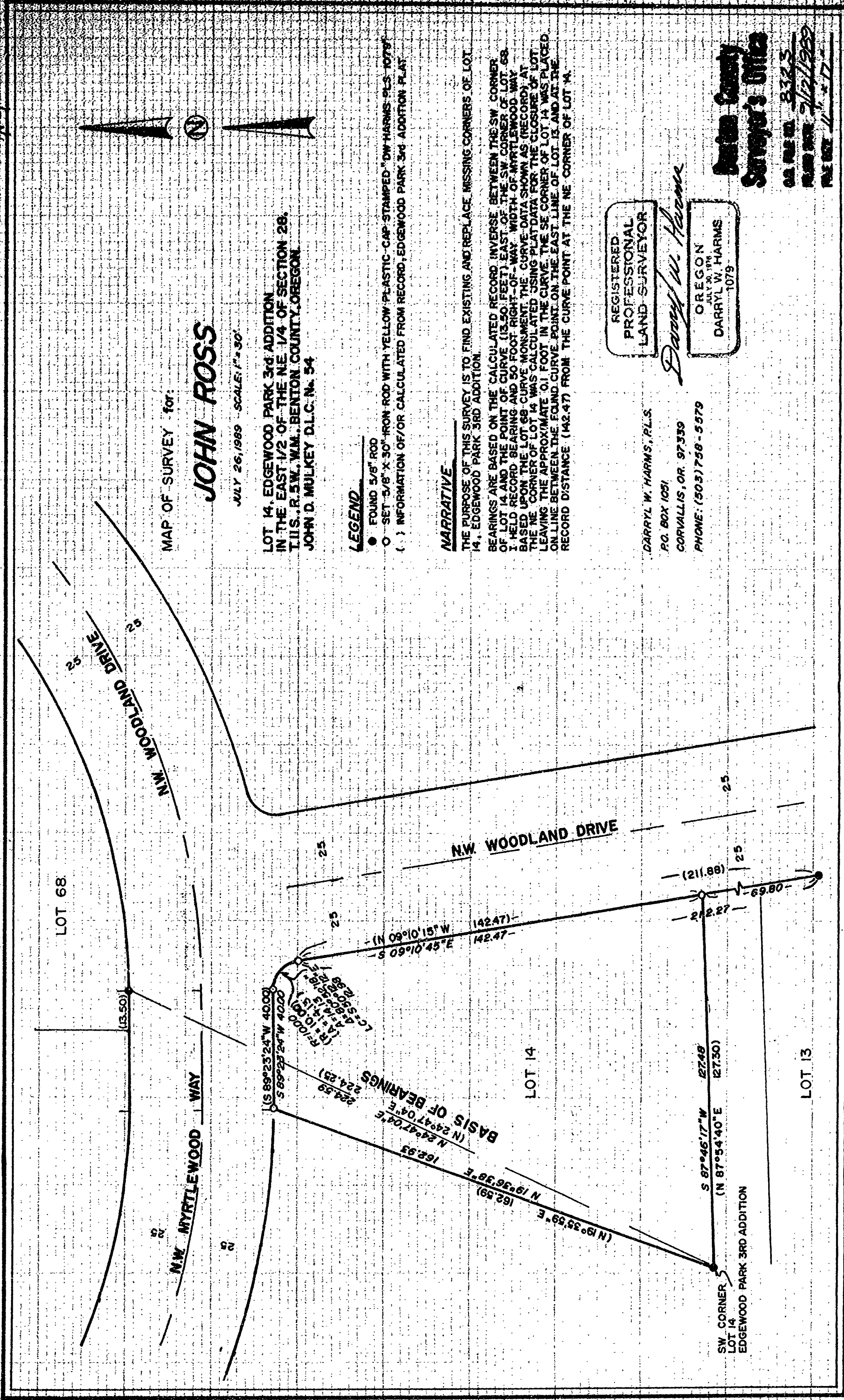


DRAWING NUMBER
8323

PLAN HOLD CORPORATION • IRVINE, CALIFORNIA
REORDER BY NUMBER 0754R

DRAWING NUMBER
8323

PLAN HOLD CORPORATION • IRVINE, CALIFORNIA
REORDER BY NUMBER 0754R



MAP OF SURVEY for:

JOHN ROSS

JULY 26, 1989 SCALE: 1" = 30'

LOT 14, EDGEWOOD PARK 3RD ADDITION
IN THE EAST 1/2 OF THE NE 1/4 OF SECTION 28,
T.11S., R.5W., W.M., BENSON COUNTY, OREGON.
JOHN D. MULKEY D.L.C. No. 54

LEGEND

- FOUND 5/8" ROD
- SET 5/8" X 30" IRON ROD WITH YELLOW PLASTIC CAP STAMPED "DW HARMIS PLS 1079"
- () INFORMATION OF/OR CALCULATED FROM RECORD, EDGEWOOD PARK 3RD ADDITION PLAT

NARRATIVE

THE PURPOSE OF THIS SURVEY IS TO FIND EXISTING AND REPLACE MISSING CORNERS OF LOT 14, EDGEWOOD PARK 3RD ADDITION.

BEARINGS ARE BASED ON THE CALCULATED RECORD INVERSE BETWEEN THE SW CORNER OF LOT 14 AND THE POINT OF CURVE (13.50 FEET) EAST OF THE SW CORNER OF LOT 68. HELD RECORD BEARING AND 50 FOOT RIGHT-OF-WAY WIDTH OF MYRTLEWOOD WAY BASED UPON THE LOT 68 CURVE MONUMENT. THE CURVE DATA SHOWN AS (RECORD) AT THE NE CORNER OF LOT 14 WAS CALCULATED USING PLAT DATA FOR THE CLOSURE OF LOT LEAVING THE APPROXIMATE .01 FOOT IN THE CURVE. THE SE CORNER OF LOT 14 WAS PLACED ON LINE BETWEEN THE FOUND CURVE POINT ON THE EAST LINE OF LOT 13 AND AT THE RECORD DISTANCE (142.47) FROM THE CURVE POINT AT THE NE CORNER OF LOT 14.

REGISTERED
PROFESSIONAL
LAND SURVEYOR

Darryl W. Harms

OREGON
JULY 30, 1978
DARRYL W. HARMIS
1079

DARRYL W. HARMIS, P.L.S.
P.O. BOX 1051
CORVALLIS, OR. 97339
PHONE: (503) 758-5579

Benton County
Surveyor's Office

OL FILE NO. 8323
RECORD DATE 7/27/1989
FILE NO. 11-17