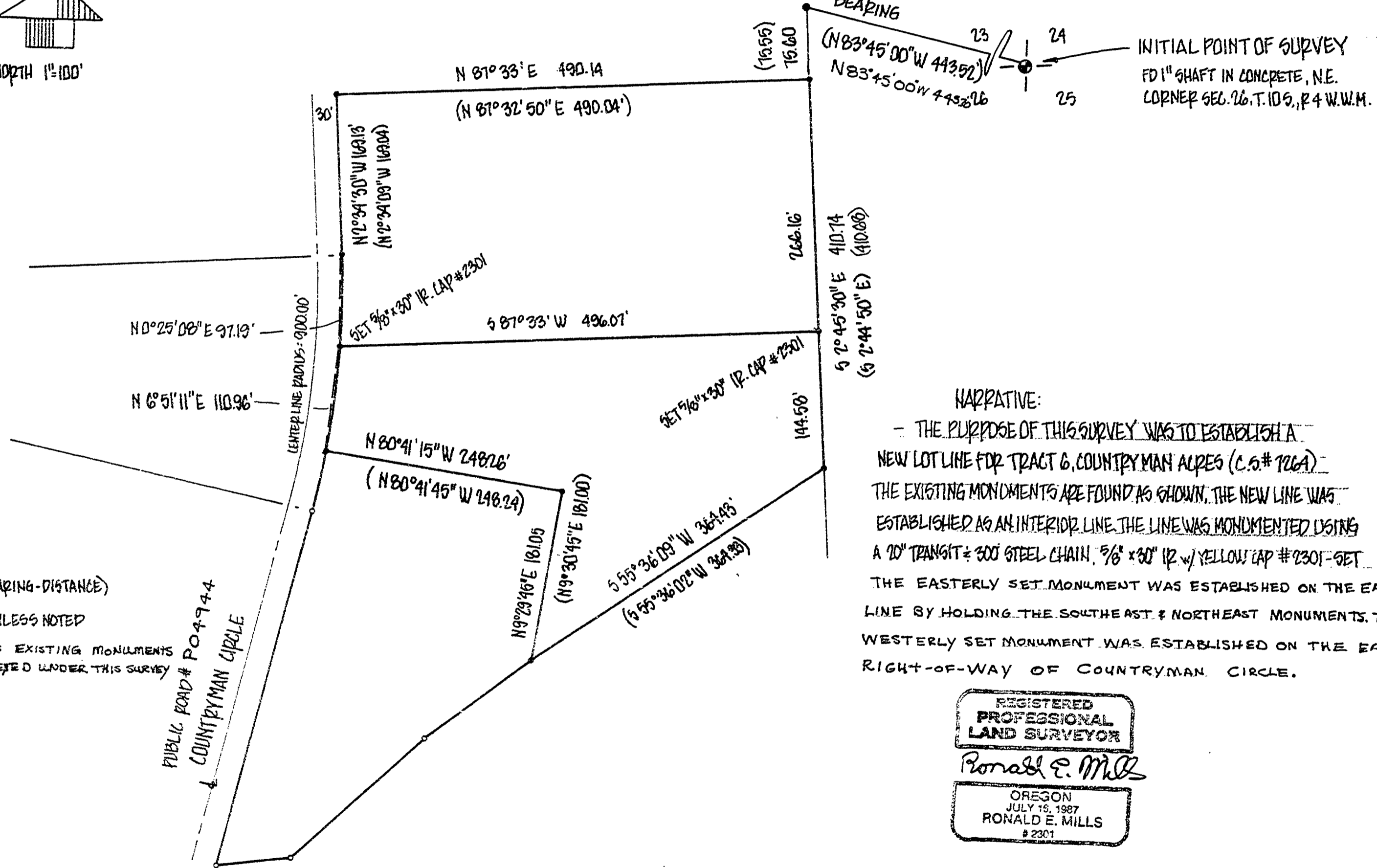
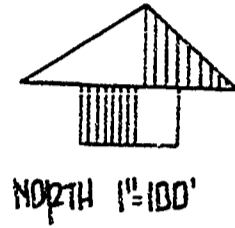


RECORD - OF - SURVEY

FOR CARL E. NYGREN OF TRACT 5 & 6 OF
COUNTRYMAN ACRES 1H, N.E. 1/4, SECTION 26,
TOWNSHIP 10 SOUTH, RANGE 4 WEST OF THE
WILLAMETTE MERIDIAN, BENTON COUNTY,
AUG. 7TH 1989

**Benton County
Surveyor's Office**

C.A. FILE NO. **8329**
FILE DATE **9/19/1989**
FILE SIZE **18" x 18"**



- (RECORD BEARING-DISTANCE)
 - FD. 5/8" IR. UNLESS NOTED
 - INDICATES EXISTING MONUMENTS NOT SURVEYED UNDER THIS SURVEY
- REFERENCE
CS. NO. 726A

NARRATIVE:
- THE PURPOSE OF THIS SURVEY WAS TO ESTABLISH A NEW LOT LINE FOR TRACT 6, COUNTRYMAN ACRES (C.S.# 726A). THE EXISTING MONUMENTS ARE FOUND AS SHOWN. THE NEW LINE WAS ESTABLISHED AS AN INTERIOR LINE. THE LINE WAS MONUMENTED USING A 20" TRANSIT & 300' STEEL CHAIN, 5/8" x 30" IR. w/ YELLOW CAP #2301-SET. THE EASTERLY SET MONUMENT WAS ESTABLISHED ON THE EASTERLY LINE BY HOLDING THE SOUTHEAST & NORTHEAST MONUMENTS. THE WESTERLY SET MONUMENT WAS ESTABLISHED ON THE EASTERLY RIGHT-OF-WAY OF COUNTRYMAN CIRCLE.

REGISTERED
PROFESSIONAL
LAND SURVEYOR
Ronald E. Mills
OREGON
JULY 16, 1987
RONALD E. MILLS
#2301

Lot line adjustment File No: CD 89-66
MINOR LAND PARTITION APPROVED 1/15/90
Rene Munsterman 9/24/90
PLANNING OFFICIAL DATE

BY: RON MILLS P.L.S.
10620 S.W. 95TH
TIGARD, OREGON 97223
2456131