

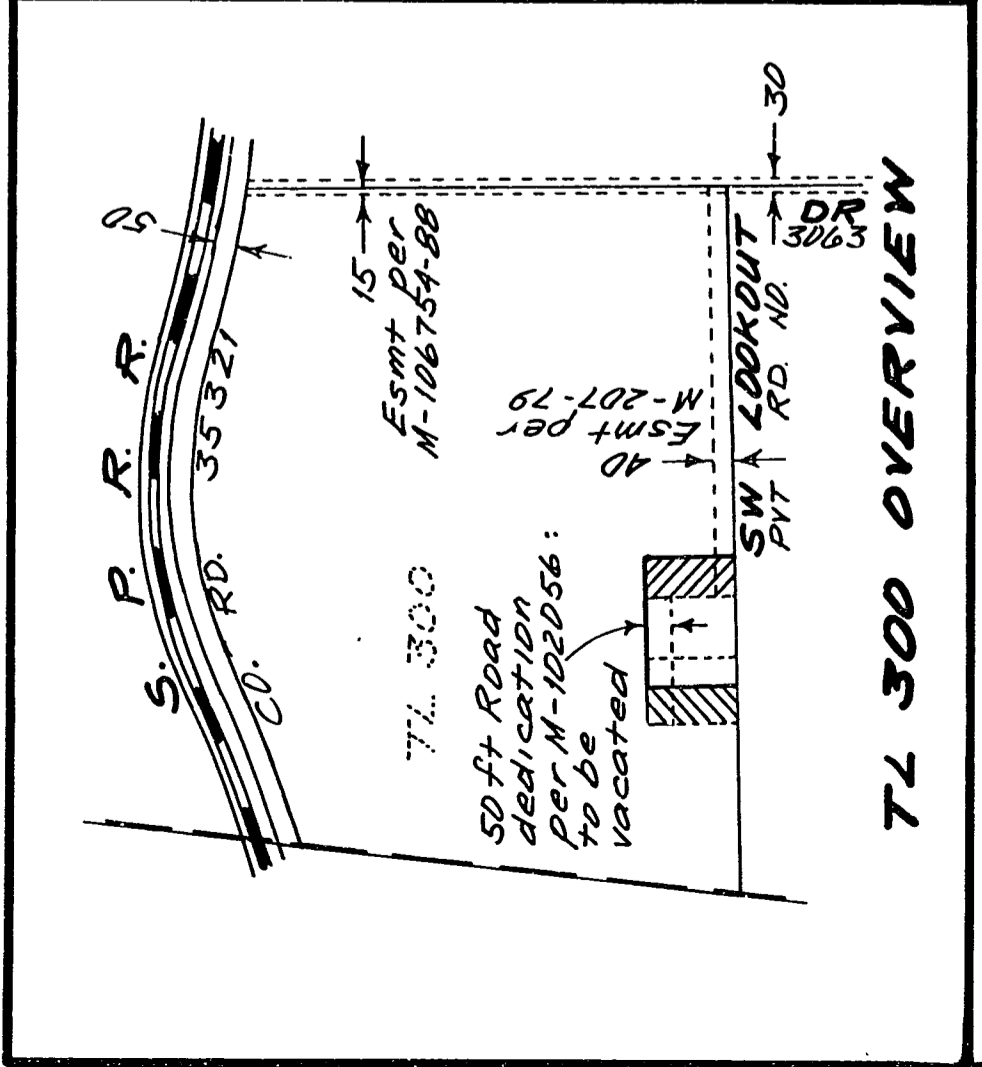
DRAWING NUMBER  
**8332**

PLAN HOLD CORPORATION • IRVINE, CALIFORNIA  
RECORDER BY NUMBER 075AR  
POSITION EDGE OF PRINT ON THIS LINE

DRAWING NUMBER  
**8332**

PLAN HOLD CORPORATION • IRVINE, CALIFORNIA  
RECORDER BY NUMBER 075AR  
POSITION EDGE OF PRINT ON THIS LINE

8332 9/28/89



REGISTERED PROFESSIONAL LAND SURVEYOR

*Theodore James Langton*

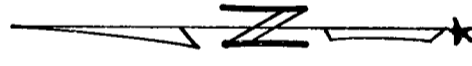
OREGON  
JULY 13, 1979  
THEODORE JAMES LANGTON  
1823

NORTHSTAR SURVEYING, INC.  
402 NW 5th St  
Corvallis, Oregon 97330  
PH: 757-9050

LD-89-46  
**LOT LINE ADJUSTMENT SURVEY**  
for  
**GERALD DUMONT**  
TAX LOTS 300, 301 & 302  
MAP 12-5-4

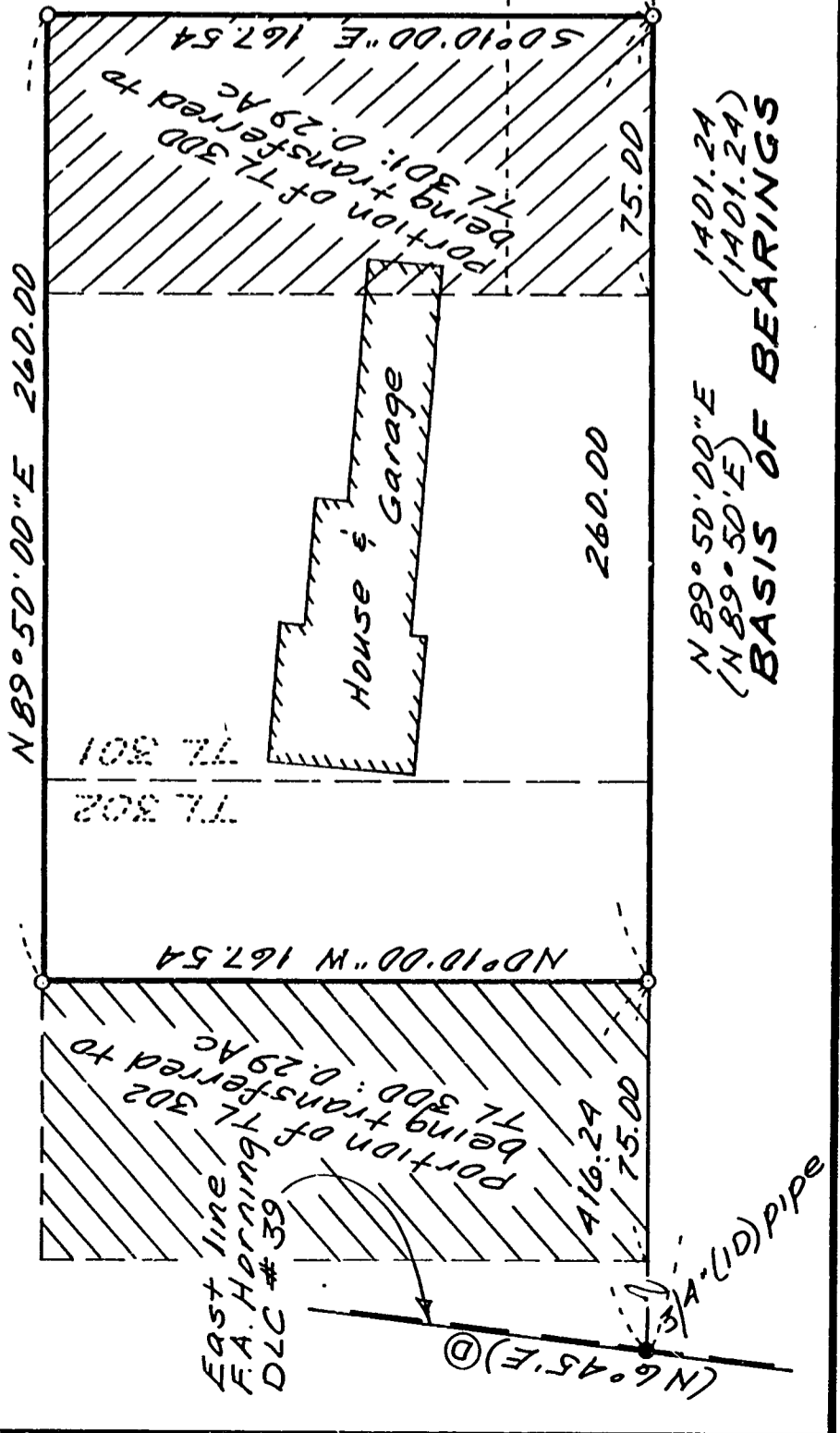
F.A. HORNING DLC NO. 39  
NE 1/4 SEC. 4 T12S, R5W, W.M.  
BENTON COUNTY, OREGON  
JULY 11, 1989

**LOT LINE ADJUSTMENT APPROVED 10/6/89**  
*Jay Munsterman* 9/24/90  
Planning official date



**NARRATIVE**

This survey monuments an adjustment of the lines between Tax Lots 300, 301 & 302, Map 12-5-4. In the process of determining the east line of T1 301, I discovered that part of an existing garage encroached onto T1 300. The affected parties agreed to shift the parcel containing T1s 301 & 302 75ft east-erly to solve the problem. This original parcel is described in M-106754-88.



**LEGEND**

- Found monument as noted.
- Set monument: 5/8"x30" rebar with red plastic cap stamped "Northstar PLS 1823"
- ( ) Record data from C56774 or ① - M-106754-88, deed records of Benton County.

Benton County  
Surveyor's Office

GA FILE NO. 8332  
PLANS DATE 9/28/1989  
FILE SIZE 11" x 17"