

DRAWING NUMBER

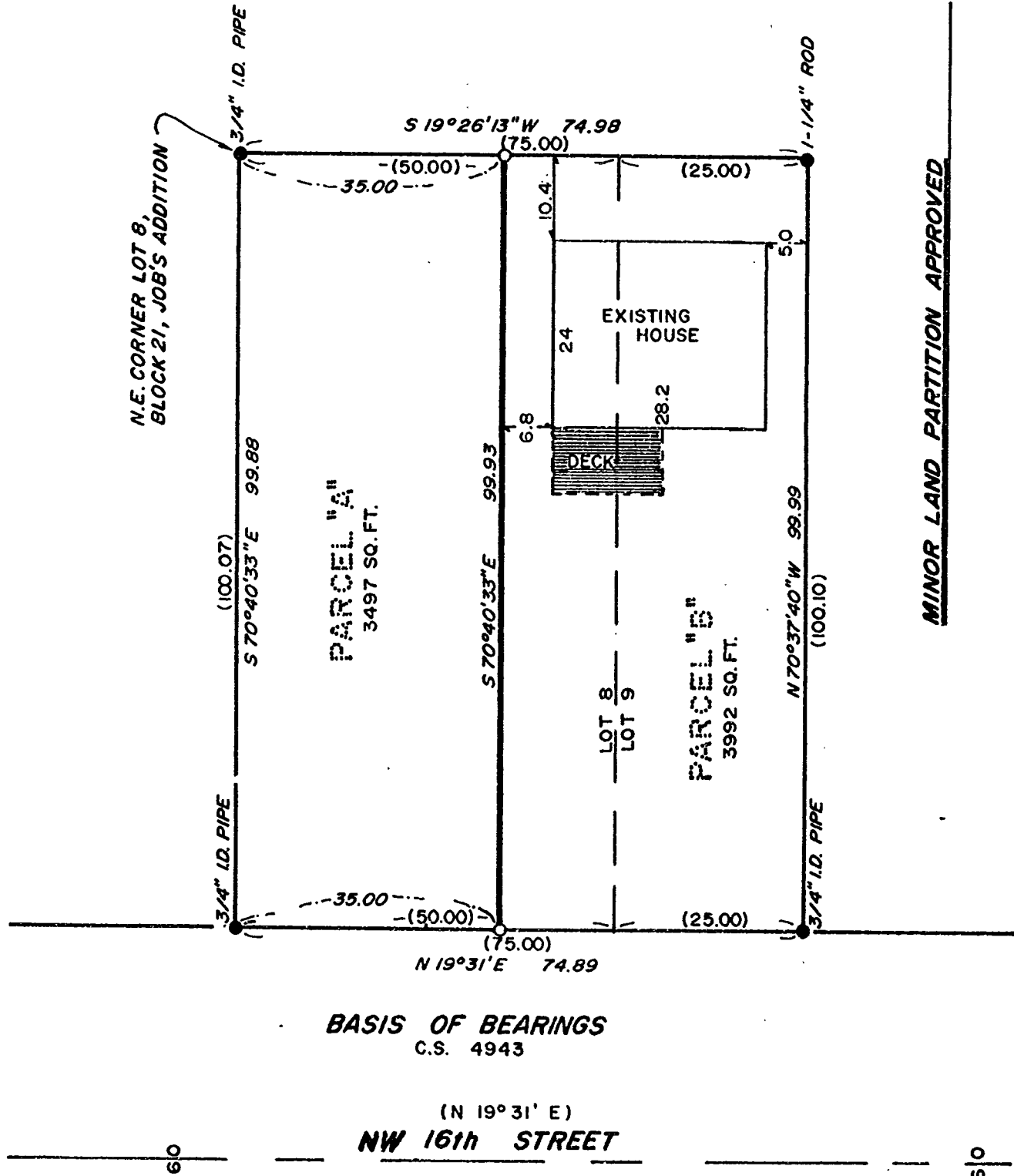
8344

PLAN HOLD CORPORATION • IRVINE, CALIFORNIA  
REORDER BY NUMBER 075AR  
POSITION EDGE OF PRINT ON THIS LINE

DRAWING NUMBER

8344

PLAN HOLD CORPORATION • IRVINE, CALIFORNIA  
REORDER BY NUMBER 075AR  
POSITION EDGE OF PRINT ON THIS LINE



MAP OF  
MINOR LAND PARTITION for:

# DAVID FOSTER

SEPTEMBER 19, 1989 SCALE: 1" = 20'

WILLIAM F. DIXON D.L.C. No. 50  
NW 1/4 SEC. 35, T.11S., R.5W., W.M.  
LOTS 8 & 9, BLOCK 21,  
JOBS ADDITION,  
CORVALLIS, BENTON COUNTY, OREGON.

### LEGEND

- MONUMENT FOUND, TYPE NOTED
- SET 5/8"x30" IRON ROD WITH YELLOW PLASTIC CAP STAMPED "DW HARMS LS 1079"
- ( ) INFORMATION OF RECORD, C.S. 1987 (EXCEPT AS NOTED).
- I.D. INNER DIAMETER

### NARRATIVE

THIS MAP REPRESENTS THE SURVEY REQUIRED TO SATISFY LDO-89-30, THE PARENT PARCEL BEING DESCRIBED ON BENTON COUNTY MICROFILM DEED No. M-91461-87. I HELD FOUND MONUMENTS IN POSITION FOR CONTROL AND PLACED NEW MONUMENTS ON THE EAST AND WEST LINES 35.00 FEET FROM THE N.W. AND N.E. CORNERS OF THE PARENT PARCEL.

REGISTERED  
PROFESSIONAL  
LAND SURVEYOR

DARRYL W. HARMS, P.L.S.  
P.O. BOX 1051  
CORVALLIS, OR 97339  
PHONE: (503) 758-5579

*Darryl W. Harms*

OREGON  
JULY 30, 1976  
DARRYL W. HARMS  
1079

MINOR LAND PARTITION APPROVED

COMMUNITY DEVELOPMENT SERVICES DIRECTOR

DATE

CITY ENGINEER

DATE

Benton County  
Surveyor's Office

C.S. FILE NO. 8344  
FILING DATE 11-6-89  
FILE SIZE 11X17