

PLAN NUMBER
8362

IRVINE, CALIFORNIA

DRAWING NUMBER
8362

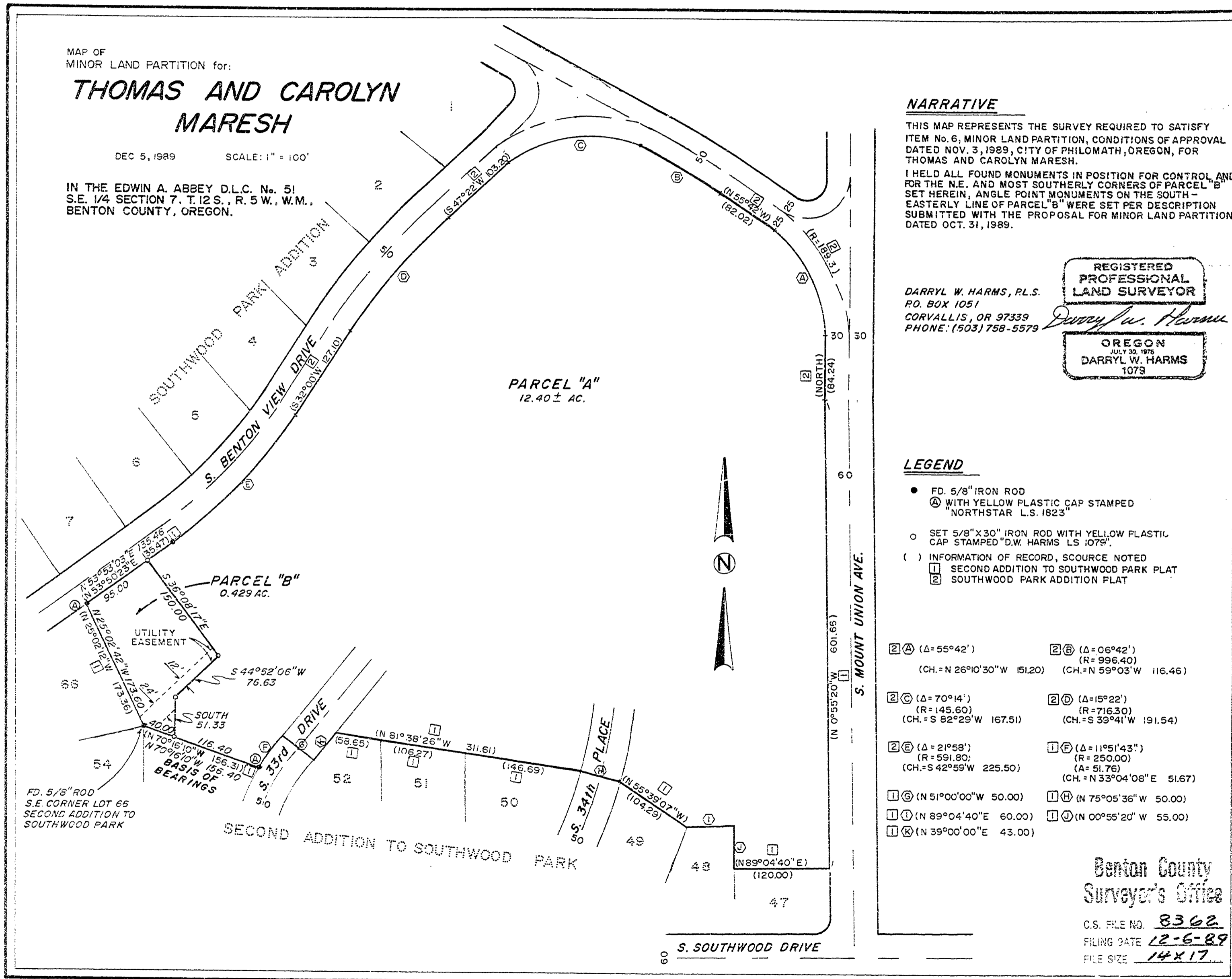
IRVINE, CALIFORNIA

MAP OF
MINOR LAND PARTITION for:

**THOMAS AND CAROLYN
MARESH**

DEC 5, 1989 SCALE: 1" = 100'

IN THE EDWIN A. ABBEY D.L.C. No. 51
S.E. 1/4 SECTION 7, T.12 S., R. 5 W., W.M.,
BENTON COUNTY, OREGON.



NARRATIVE

THIS MAP REPRESENTS THE SURVEY REQUIRED TO SATISFY
ITEM No. 6, MINOR LAND PARTITION, CONDITIONS OF APPROVAL
DATED NOV. 3, 1989, CITY OF PHILOMATH, OREGON, FOR
THOMAS AND CAROLYN MARESH.

I HELD ALL FOUND MONUMENTS IN POSITION FOR CONTROL AND
FOR THE N.E. AND MOST SOUTHERLY CORNERS OF PARCEL "B"
SET HEREIN. ANGLE POINT MONUMENTS ON THE SOUTH -
EASTERLY LINE OF PARCEL "B" WERE SET PER DESCRIPTION
SUBMITTED WITH THE PROPOSAL FOR MINOR LAND PARTITION
DATED OCT. 31, 1989.

REGISTERED
PROFESSIONAL
LAND SURVEYOR

DARRYL W. HARMS, P.L.S.
P.O. BOX 1051
CORVALLIS, OR 97339
PHONE: (503) 758-5579

Darryl W. Harms

OREGON
JULY 30, 1978
DARRYL W. HARMS
1079

LEGEND

- FD. 5/8" IRON ROD
- Ⓐ WITH YELLOW PLASTIC CAP STAMPED "NORTHSTAR L.S. 1823"
- SET 5/8" X 30" IRON ROD WITH YELLOW PLASTIC CAP STAMPED "D.W. HARMS L.S. 1079"
- () INFORMATION OF RECORD, SOURCE NOTED
- ① SECOND ADDITION TO SOUTHWOOD PARK PLAT
- ② SOUTHWOOD PARK ADDITION PLAT

②Ⓐ (Δ=55°42') (CH.=N 26°10'30"W 151.20)	②Ⓑ (Δ=06°42') (R=996.40) (CH.=N 59°03'W 116.46)
②Ⓒ (Δ=70°14') (R=145.60) (CH.=S 82°29'W 167.51)	②Ⓓ (Δ=15°22') (R=716.30) (CH.=S 39°41'W 191.54)
②Ⓔ (Δ=21°58') (R=591.80) (CH.=S 42°59'W 225.50)	①Ⓕ (Δ=11°51'43") (R=250.00) (A=51.76) (CH.=N 33°04'08"E 51.67)
①Ⓖ (N 51°00'00"W 50.00)	①Ⓗ (N 75°05'36"W 50.00)
①Ⓙ (N 89°04'40"E 60.00)	①Ⓚ (N 00°55'20"W 55.00)
①Ⓚ (N 39°00'00"E 43.00)	

Benton County
Surveyor's Office

C.S. FILE NO. **8362**
FILING DATE **12-6-89**
FILE SIZE **14 X 17**