

DRAWING NUMBER  
**8367**

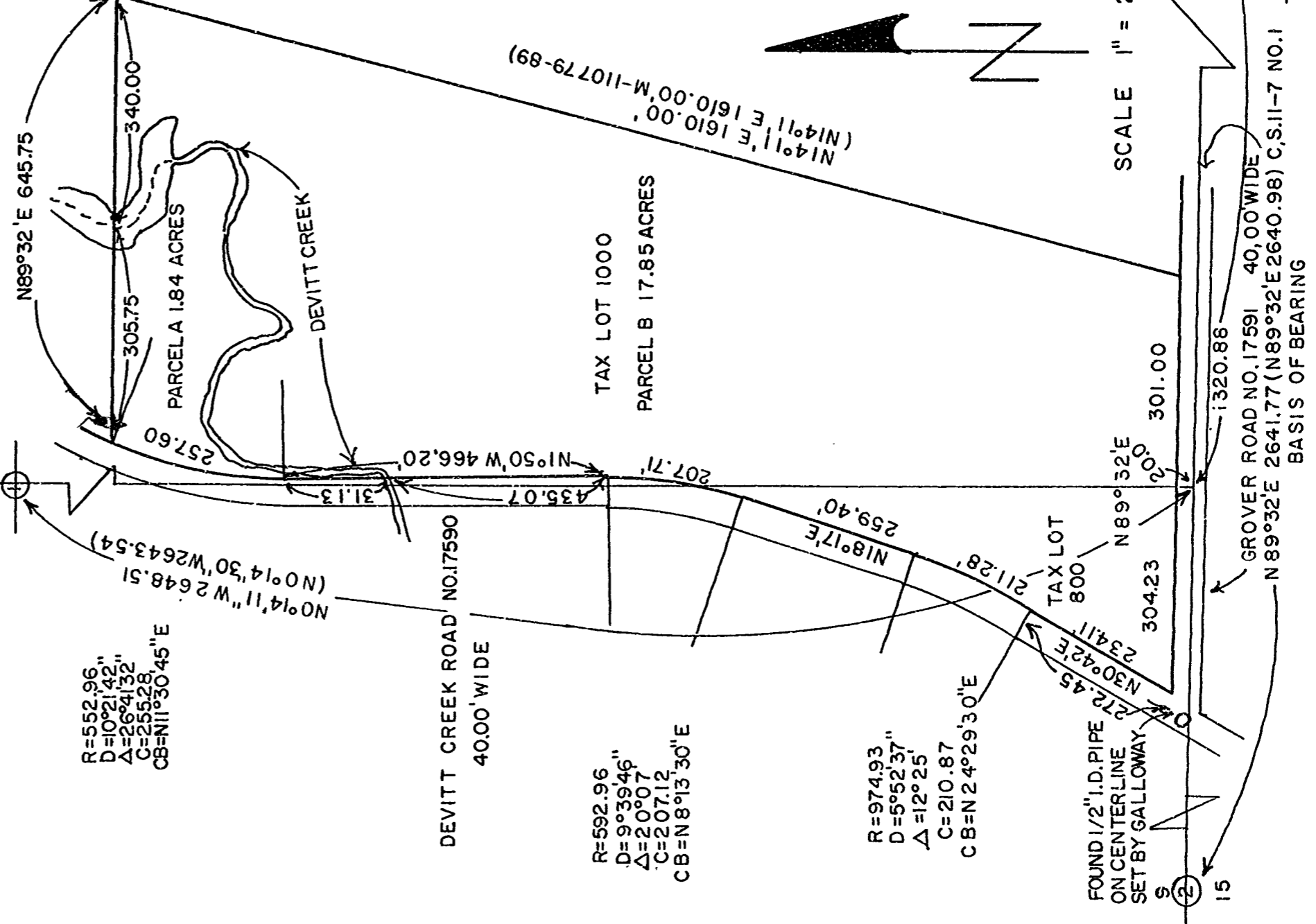
PLAN HOLD CORPORATION • IRVINE, CALIFORNIA  
REORDER BY NUMBER 075AR  
POSITION LINE OF PRINT ON THIS LINE

DRAWING NUMBER  
**8367**

PLAN HOLD CORPORATION • IRVINE, CALIFORNIA  
REORDER BY NUMBER 075AR  
POSITION LINE OF PRINT ON THIS LINE

**MINOR LAND PARTITION FOR CHARLES HIXON  
IN THE S.E. 1/4 SEC. 9, T.11S., R.7W., W.M. BENTON COUNTY, OREGON**  
SCALE 1" = 200'

DECEMBER 15, 1989  
WESTERN SURVEYING 1334 MAIN ST., PHILOMATH, OREGON  
PHONE (503) 929-3355



R=552.96  
D=10°21'42"  
Δ=26°41'32"  
C=255.28  
CB=N11°30'45"E

R=592.96  
D=9°39'46"  
Δ=20°07'  
C=207.12  
CB=N 8°15'30"E

R=974.93  
D=5°52'37"  
Δ=12°25'  
C=210.87  
CB=N 2°42'29"30"E

FOUND 1/2" I.D. PIPE  
ON CENTERLINE  
SET BY GALLOWAY.

**NARRATIVE**

THE PURPOSE OF THIS MAP IS TO SHOW THE LOCATION AND SIZE OF PARCEL A FOR CHARLES HIXON AND TRAMAP COMPANY, THE CURRENT OWNER OF TAX LOT 1000, BOTH INDICATED THEY DID NOT NEED MONUMENTS SET AT THE CORNERS OF THE PARCELS. THE LOCATION OF THE PARCEL WAS SURVEYED USING WARRANTY DEEDS M-110779-89 AND M-27796-81, BENTON COUNTY RECORDS, W.C. GALLOWAY COUNTY SURVEY NO. 11-7-1 AND HIS SURVEY OF ROAD NO. 579, NOW ROAD NO. 17590. TAX LOT 800, CURRENTLY OWNED BY KENNEY HAZELTON, RICHARD DAVIS AND JACK JOYCE, WAS INCLUDED IN THE PARENT PARCEL AS INSTRUCTED BY THE BENTON COUNTY PLANNING DEPARTMENT.

File No: PC 89-23  
MINOR LAND PARTITION APPROVED 12/10/89  
*Shary Plummer DeGruen* 9/25/89  
PLANNING OFFICIAL DATE

REGISTERED  
PROFESSIONAL  
LAND SURVEYOR  
*John D. Howell*  
OREGON  
JAN 17, 1980  
JOHN D. HOWELL  
1901

Benton County  
Surveyor's Office

C.S. FILE NO 8367  
FILING DATE 12-18-89  
FILE SIZE 11x17

- (SEE CORNER CARDS FOR MORE DETAIL ON CORNERS)
- 1 FOUND 1/2" I.D. PIPE INSIDE 1" I.D. PIPE AND 2 BEARING TREES
  - 2 FOUND 3" BRASS CAPSET BY OREGON STATE BOARD OF FORESTRY IN 1957
  - 3 FOUND 3" OCTAGON BOLT AT CORNER AND 4 BEARING TREES AS PER CORNER CARD 3330
- R = RADIUS  
D = DEGREE OF CURVATURE  
Δ = CENTRAL ANGLE  
C = CHORD DISTANCE  
CB = CHORD BEARING  
( ) = INFORMATION OF RECORD FROM GALLOWAY SURVEY NO. 11-7-1 UNLESS NOTED OTHERWISE  
DEVITT CREEK ROAD LOCATION WAS CALCULATED FROM GALLOWAY'S SURVEY OF ROAD NO. 579 NOW NO. 17590 (DEVITT CREEK ROAD) ALL ROAD INFORMATION SHOW IS FOR THE RIGHTOFWAY ADJOINING THE PARCEL