

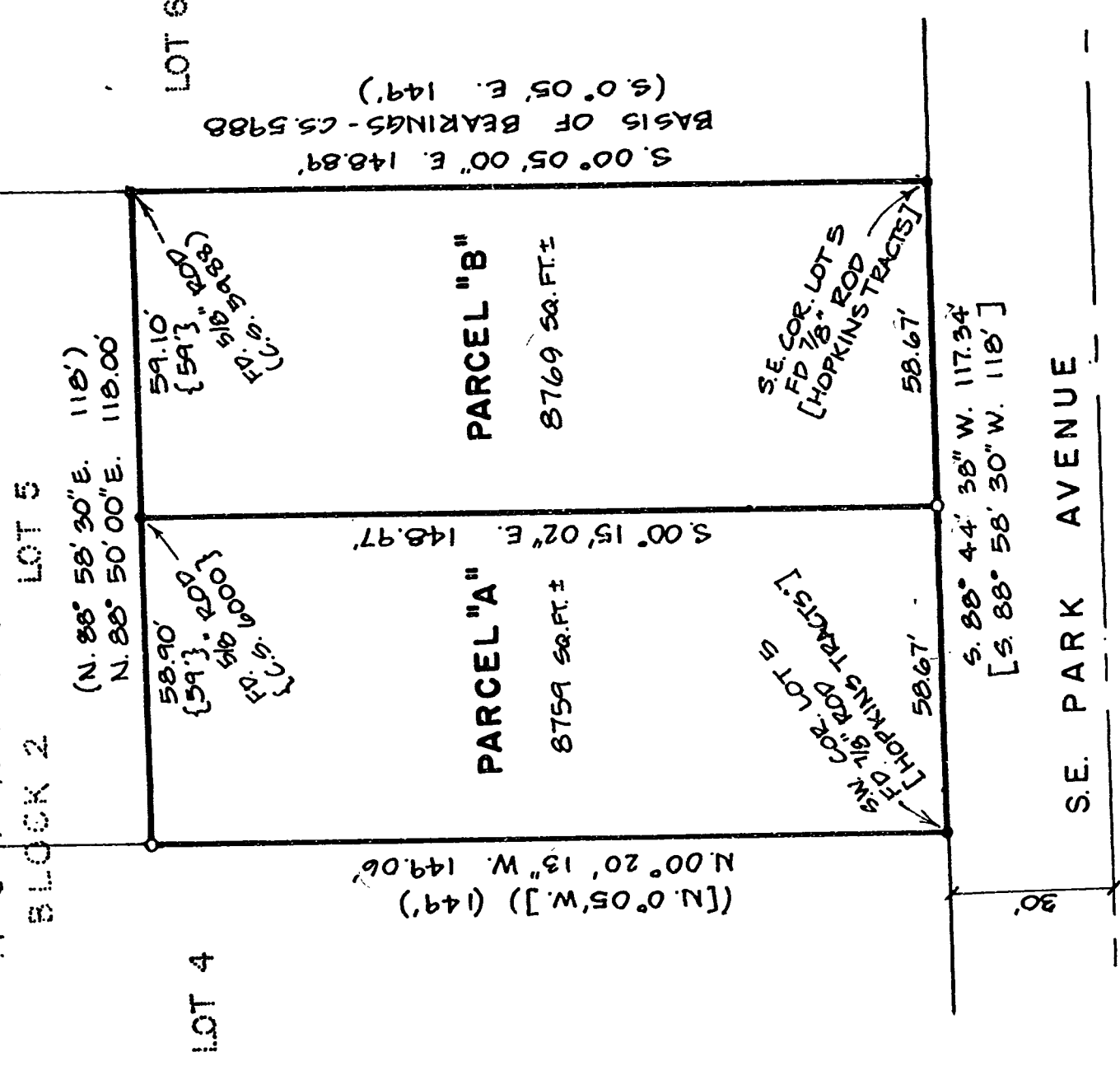
DRAWING NUMBER
8374

PLAN HOLD CORPORATION • IRVINE, CALIFORNIA
RECORDER BY NUMBER 075AR
POSITION EDGE OF PRINT ON THIS LINE

DRAWING NUMBER
8374

PLAN HOLD CORPORATION • IRVINE, CALIFORNIA
RECORDER BY NUMBER 075AR
POSITION EDGE OF PRINT ON THIS LINE

H O P K I N S T R A C T S



LEGEND:

- SET 5/8" x 30" REBAR ROD WITH RED PLASTIC CAP MARKED: "K & D ENG. L.S. 1630."
- FOUND MONUMENT AS NOTED.
- () RECORD DATA FROM C.S. 5988
- [] RECORD DATA FROM PLAT OF "HOPKINS TRACTS"
- { } RECORD DATA FROM C.S. 6000

NARRATIVE:

PURPOSE:
THE PURPOSE OF THIS SURVEY IS TO MONUMENT AN APPROVED MINOR LAND PARTITION. (CITY APPLICATION MR-89-3)

BOUNDARY DETERMINATION:
THE BASIS OF BEARING IS C.S. 5988 AND WAS ESTABLISHED BY HOLDING THE SOUTHEAST AND NORTHEAST FOUND MONUMENTS.

THE NORTH LINE OF THE BOUNDARY WAS ESTABLISHED BY HOLDING THE TWO FOUND MONUMENTS AS SHOWN. THE NORTHWEST CORNER WAS ESTABLISHED AT A RECORDED DISTANCE FROM THE MONUMENT AT THE NORTHEAST CORNER.

THE WEST LINE WAS ESTABLISHED BY HOLDING THE FOUND MONUMENT AT THE SOUTHWEST CORNER AND THE SET MONUMENT AT THE NORTHWEST CORNER.

THE SOUTH AND EAST LINES WERE ESTABLISHED BY HOLDING THE FOUND MONUMENTS AS SHOWN.

AFFIDAVIT:

I, JACK R. BURRELL, REGISTERED PROFESSIONAL LAND SURVEYOR, IN THE STATE OF OREGON HAVE SURVEYED THE LAND PARTITION SHOWN HEREON.

REGISTERED PROFESSIONAL LAND SURVEYOR

Jack R. Burrell
JACK R. BURRELL
1630

RECORD OF SURVEY FOR:

ROY L. RIDER
Located in a Portion of LOT 5, BLOCK 2 of "HOPKINS TRACTS" in DAVID BUTTERFIELD D.L.C. No. 47, SE 1/4 SEC. 11, T. 12 S., R. 5 W., WILLAMETTE MERIDIAN, CORVALLIS, BENTON CO., OREGON
DECEMBER 27, 1989

OWNER'S CONSENT:

WE, ROY L. RIDER AND SANDRA N. RIDER, ARE THE OWNERS OF THE LANDS REPRESENTED ON THE MAP SHOWN HEREON, AND WE DO HEREBY CONSENT TO THE RECORDING OF THIS PARTITION MAP.

Roy L. Rider
ROY L. RIDER

Sandra N. Rider
SANDRA N. RIDER

APPROVALS:

EXAMINED AND APPROVED THIS 3RD DAY OF JANUARY, 1989

BY *Shirley Munn*
CORVALLIS CITY ENGINEER

EXAMINED AND APPROVED THIS 3RD DAY OF JANUARY, 1989

BY *Lee Munn*
CORVALLIS DEVELOPMENT SERVICES DIRECTOR

KD ENGINEERING, INC.
276 N.W. HICKORY STREET
POST OFFICE BOX 725
ALBANY, OREGON 97321

City of Corvallis Application MR-89-3
MINOR LAND PARTITION

Desn. by: Scale: 1" = 30'
Dwg. by: M. M. SCHULTZ Date: DEC. 21, 1989
Ckd. by: J. E. B. Project no.: 89-83
Sheet no.: 1 OF 1