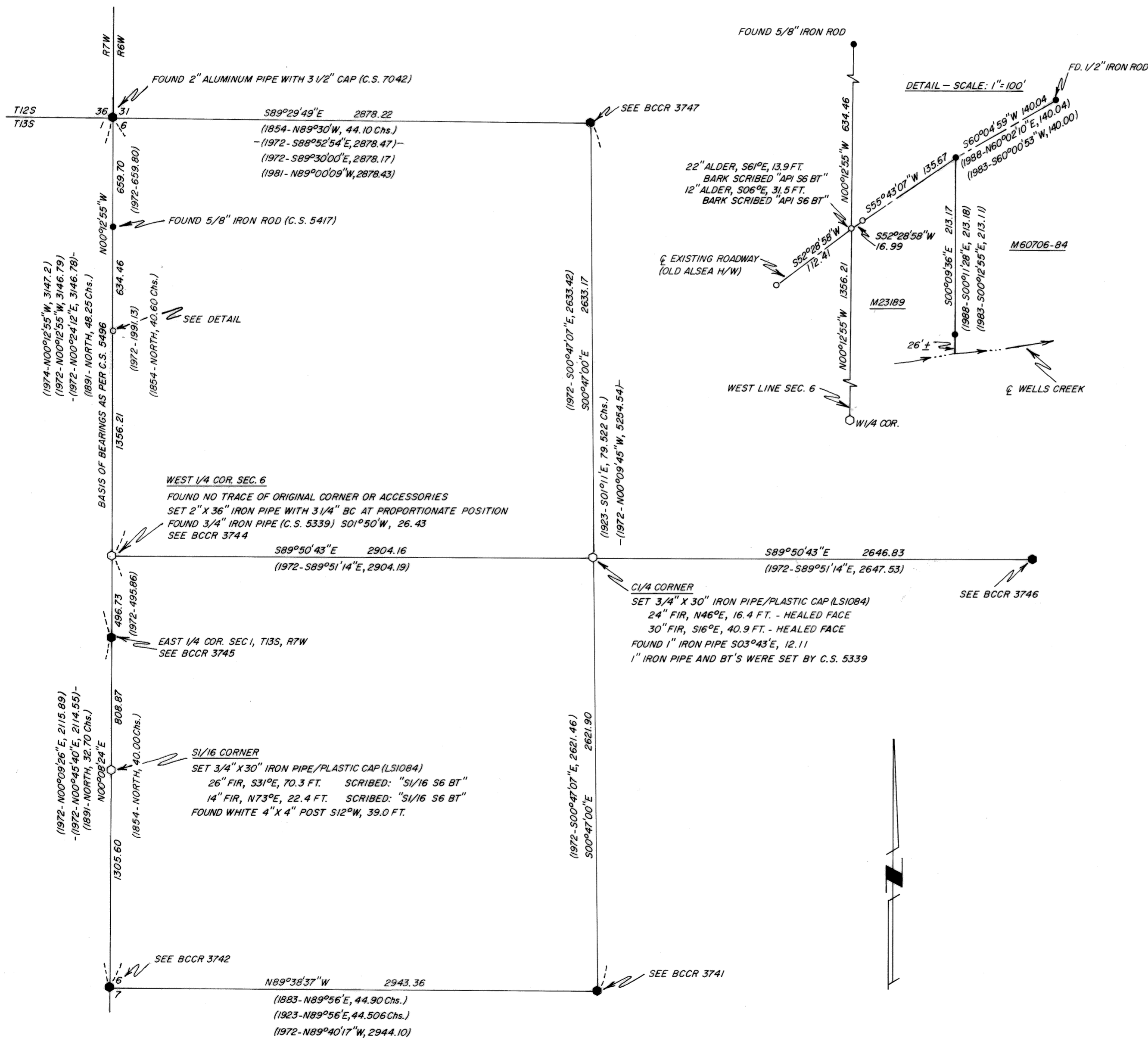


RECORD OF SURVEY
for STARKER FORESTS, INC.
in SECTION 6, T13S, R6W, W.M.
BENTON COUNTY, OREGON
MARCH 13, 1990

8392
3-30-90

Benton County
Surveyor's Office

CS file # 8392
FILING DATE 3/30/1990
FILE SIZE 18" X 24"



- Found 2" iron pipe with 3/4" brass cap, except as noted
 - Found 5/8" iron rod, except as noted
 - Set 5/8" X 30" iron rod with plastic cap (LS1084)
 - Set monument as noted
 - BC Brass Cap
- (1854) - Data of record as per original survey by Gordon & Preston
 (1883) - Data of record as per original survey by G. Mercer
 (1891) - Data of record as per retracement and original survey by R. Collier
 (1923) - Data of record as per Galloway Hard Copy 13-6-00004
 (1972) - Data of record as per C.S. 5339
 (1972) - Data of record as per C.S. 5496
 (1974) - Data of record as per C.S. 5796
 (1983) - Data of record as per C.S. 7591
 (1988) - Data of record as per C.S. 8121
 Iron pipe diameters are inside measure
 BCCR Benton County Corner Restoration
 AP Angle Point

NARRATIVE

The purpose of this survey is to reestablish the West 1/4 corner of Section 6, and to set the true center 1/4 corner of Section 6. The SI/16 corner on the West line of Section 6 was also set. Corners were also established as per a metes and bounds description in the NW1/4 of Section 6 (see DETAIL).

In 1972 C.S. 5339 and C.S. 5496 both subdivided Section 6. C.S. 5339 set a pipe for the West 1/4 corner at record distance from a creek as per the 1854 topographic calls. C.S. 5496 computed a position for the 1/4 corner by single proportion. These two positions are approximately 26 feet apart. In order to resolve this problem a letter was sent to the Cadastral Survey Department of the BLM, requesting their opinion as to the correct procedure in this situation. The BLM's response was that topographic calls are rarely used to reestablish original corners, except in cases of extreme distortion or lack of original control corners. Since there is not extreme distortion, and there are original control corners 1/2 mile North and South, we have reestablished the West 1/4 corner of Section 6 by single proportion method. (See copy of letter to the BLM, and their response, attached to this survey.)

At the SW corner of Section 6 we found a 1" iron pipe of unknown origin. C.S. 5339 and C.S. 5496 both call for a wood stake. Starker Forest files contained a reference to an iron pipe, but no mention of its origin. Since this is also a corner of BLM ownership we contacted their State office. Field notes from their administrative surveys note an iron pipe for this corner in 1974. Although no mention was made as to its origin, it is probable that it is an unofficial monument set by the BLM State office during an administrative survey. As the pipe is in correct position with reference to the BT's, and we find no evidence of a wood stake, we have accepted it as a perpetuation of the original corner position.

In 1923 W.C. Galloway did not recover the original 1/4 corner of Sections 6 and 7 (Galloway Hard Copy 13-6-00004). He therefore reestablished said 1/4 corner by proportion. For some reason he did not set the actual corner point, but instead set a witness corner. In 1965 L.J. Martin set a pipe for the 1/4 corner at supposed record bearing and distance from Galloway's recovered witness corner. The correct procedure to establish the 1/4 corner would have been to proportion between Galloway's witness corner and the SW corner of Section 6. This procedure would place the 1/4 corner approximately 18 feet from the iron pipe. But due to the decayed condition of Galloway's witness corner (a large stone) and the extensive use of Martin's pipe we have accepted the pipe as the true corner position.

In conjunction with this survey we also perpetuated several original and reestablished corner positions for the Benton County Surveyors Office. See Benton County Corner Restorations 3741 to 3747.

C.S. 5496 shows the bearing of the W1/2 of the South line of Section 6 to be N89°40'17"E. Computing around that survey shows the bearing to actually be S89°40'17"E.

Surveyed by:
Peterson & Associates
8155 NW Mitchel Drive
Corvallis, Oregon 97330
Phone: 757-1794

REGISTERED
PROFESSIONAL
LAND SURVEYOR

OREGON
JULY 31, 1978
JIM S. PETERSON
1084