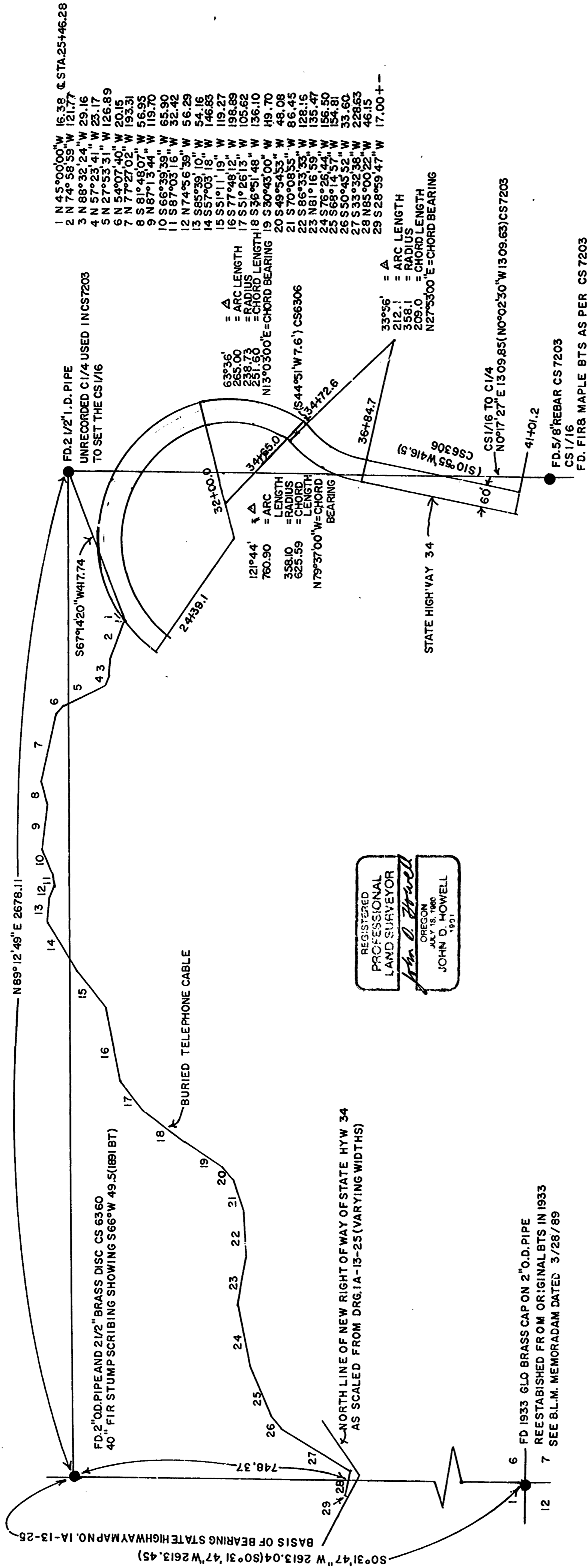


RECORD OF SURVEY FOR PIONEER TELEPHONE COOPERATIVE  
 IN THE S.W.1/4 AND THE N.W.1/4 OF SECTION 6, TOWNSHIP 14 SOUTH, RANGE 8 WEST, W.M.  
 BENTON COUNTY, OREGON MARCH 18, 1990 SCALE 1" = 200'

Benton County  
 Surveyor's Office  
 C.S. FILE NO. 2395  
 FILING DATE 4-6-79  
 FILE SIZE 18x24



1	N 45°00'00\"	W 16.38	STA. 25+46.28
2	N 74°58'59\"	W 121.77	
3	N 88°32'24\"	W 29.16	
4	N 57°23'41\"	W 23.17	
5	N 27°53'31\"	W 126.89	
6	N 54°07'40\"	W 20.15	
7	N 7°27'02\"	W 193.31	
8	S 81°48'07\"	W 56.95	
9	N 87°15'44\"	W 119.70	
10	S 66°39'39\"	W 65.90	
11	S 87°03'16\"	W 32.42	
12	N 74°56'39\"	W 56.29	
13	S 88°39'10\"	W 54.16	
14	S 57°03'18\"	W 146.88	
15	S 51°11'19\"	W 119.27	
16	S 77°48'12\"	W 198.89	
17	S 51°26'13\"	W 105.62	
18	S 36°51'48\"	W 136.10	
19	S 30°43'00\"	W 119.70	
20	S 49°54'53\"	W 86.08	
21	S 70°08'55\"	W 86.45	
22	S 86°33'33\"	W 128.15	
23	N 81°16'59\"	W 135.47	
24	S 76°26'44\"	W 156.50	
25	S 68°15'57\"	W 194.81	
26	S 30°45'52\"	W 33.60	
27	S 33°32'38\"	W 228.63	
28	N 85°00'22\"	W 46.15	
29	S 28°59'47\"	W 17.00	

REGISTERED  
 PROFESSIONAL  
 LAND SURVEYOR  
*John D. Howell*  
 OREGON  
 JULY 15, 1980  
 JOHN D. HOWELL  
 1921

NARRATIVE THIS SURVEY WAS DONE TO LOCATE THE CENTER OF A CABLE PLACED BY PIONEER TELEPHONE COOPERATIVE SO A DESCRIPTION OF A 10.00 FOOT WIDE EASEMENT CAN BE WRITTEN. THE CENTER 1/4 AND THE CENTER SOUTH 1/16 CORNERS OF SECTION 6 WERE TIED TO, TO SHOW THE RELATIVE POSITION OF THE CABLE TO THE FOUND MONUMENTS, WHICH MAY NOT BE IN THE CORRECT POSITIONS. THE WEST 1/4 CORNER AND THE SOUTHWEST SECTION CORNER OF SECTION 6 WAS USED AS CONTROL FOR THE BASIS OF BEARING ESTABLISHED BY THE STATE HIGHWAY DEPARTMENT ON DRAWING NUMBER 1A-13-25. AS OF THE TIME OF THIS SURVEY MONUMENTS FOR THE NEW RIGHT OF WAY TO REALIGN THE DIGGER CREEK CROSSING HAVE NOT BEEN ESTABLISHED. THE NORTH RIGHT OF WAY LINE AND THE CABLE INTERSECTION WAS SCALED FROM STATE HIGHWAY DRAWING NUMBER 1A-13-25. THE CENTER LINE OF HIGHWAY 34 WAS ESTABLISHED FROM INFORMATION IN CS 6306 AND STATE HIGHWAY DRAWINGS.



WESTERN SURVEYING 1334 MAIN ST. PHILOMATH OR. PHONE (503)929-3355