

8402

DRAWING NUMBER  
PLAN HOLD CORPORATION IRVINE, CALIFORNIA  
REGISTRY NUMBER 13526

DRAWING NUMBER  
PLAN HOLD CORPORATION IRVINE, CALIFORNIA  
REGISTRY NUMBER 13526

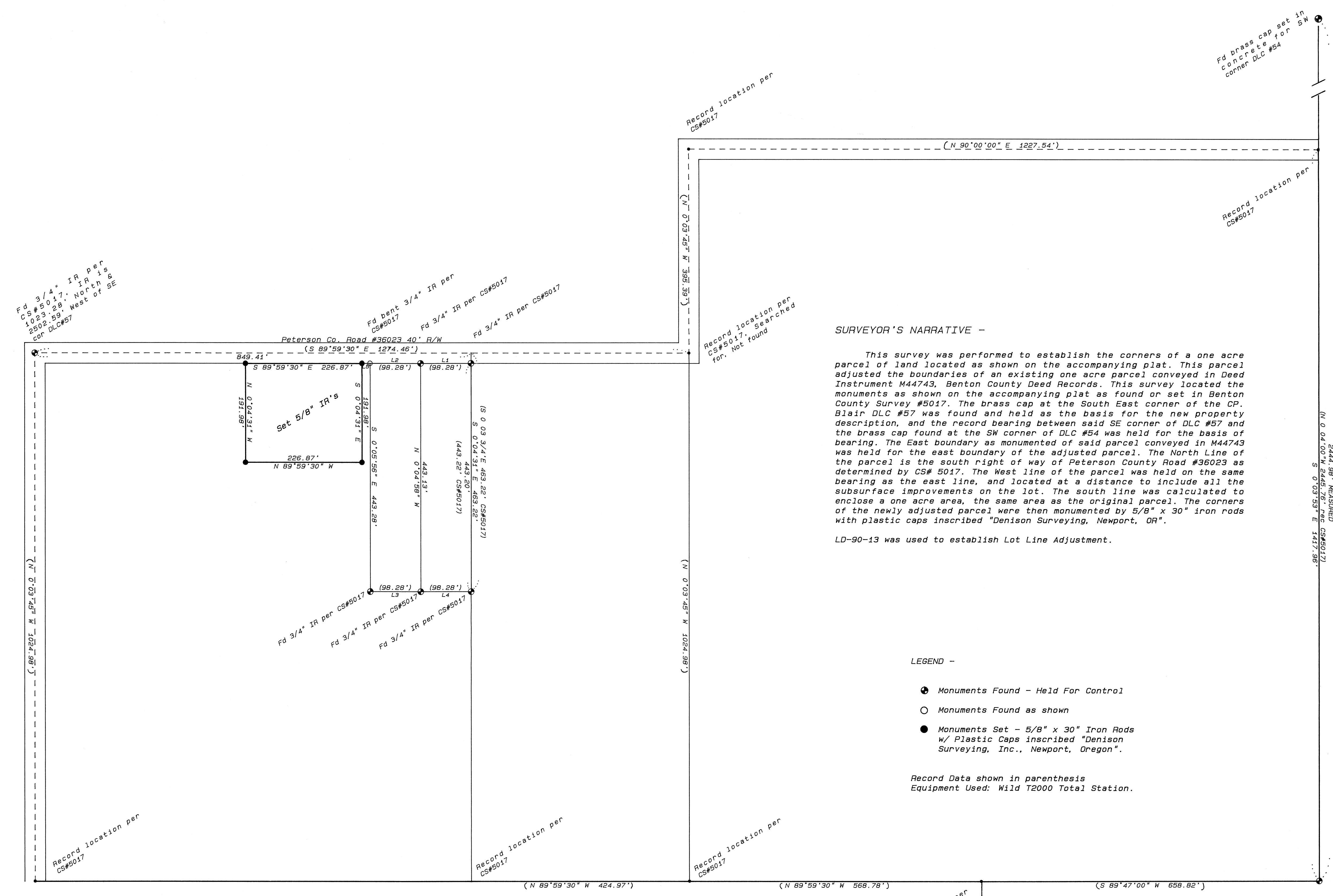
DRAWING NUMBER  
PLAN HOLD CORPORATION IRVINE, CALIFORNIA  
REGISTRY NUMBER 13526

DRAWING NUMBER  
PLAN HOLD CORPORATION IRVINE, CALIFORNIA  
REGISTRY NUMBER 13526

DRAWING NUMBER  
8402  
PLAN HOLD CORPORATION IRVINE, CALIFORNIA  
REGISTRY NUMBER 13526

Benton County  
Surveyor's Office

C.S. FILE NO. 8402  
DATE 5-4-1990  
SCALE 24 X 36



SURVEYOR'S NARRATIVE -

This survey was performed to establish the corners of a one acre parcel of land located as shown on the accompanying plat. This parcel adjusted the boundaries of an existing one acre parcel conveyed in Deed Instrument M44743, Benton County Deed Records. This survey located the monuments as shown on the accompanying plat as found or set in Benton County Survey #5017. The brass cap at the South East corner of the CP, Blair DLC #57 was found and held as the basis for the new property description, and the record bearing between said SE corner of DLC #57 and the brass cap found at the SW corner of DLC #54 was held for the basis of bearing. The East boundary as monumented of said parcel conveyed in M44743 was held for the east boundary of the adjusted parcel. The North Line of the parcel is the south right of way of Peterson County Road #36023 as determined by CS# 5017. The West line of the parcel was held on the same bearing as the east line, and located at a distance to include all the subsurface improvements on the lot. The south line was calculated to enclose a one acre area, the same area as the original parcel. The corners of the newly adjusted parcel were then monumented by 5/8" x 30" iron rods with plastic caps inscribed "Denison Surveying, Newport, OR".

LD-90-13 was used to establish Lot Line Adjustment.

LEGEND -

- Monuments Found - Held For Control
- Monuments Found as shown
- Monuments Set - 5/8" x 30" Iron Rods w/ Plastic Caps inscribed "Denison Surveying, Inc., Newport, Oregon".

Record Data shown in parenthesis  
Equipment Used: Wild T2000 Total Station.

Lot line adjustment approved 5/11/90

*Kay Munsterman* 9/29/90  
Planning Official Date

LINE	BEARING	DISTANCE
L1	S 89°59'09" W	98.26
L2	N 89°53'02" W	95.44
L3	S 89°58'19" E	98.31
L4	S 89°58'19" E	98.21
L5	N 89°58'42" E	15.66

REGISTERED  
PROFESSIONAL  
LAND SURVEYOR  
2-2  
FEBRUARY 14, 1988  
DON DENISON  
2183

SURVEY FOR - <b>AL &amp; FRAN WESTPHAL</b>	
LOCATED IN - C.P. BLAIR DLC #57, in the SE 1/4 S. 26, T12S, R6W, W.M.	
DATE	May 3, 1990
SCALE	1" = 100'
JOB NUMBER	DSI-1183
DRAWN BY	DD
CHECKED BY	JM
REVISION #	2
<b>DENISON SURVEYING, Inc.</b> 720 SW ANGLE, NEWPORT, OR 97365 (503) 265-9308	
LAND SURVEYING    TIMBERLANDS MANAGEMENT	