

DRAWING NUMBER
8405

PLAN HOLD CORPORATION • IRVINE, CALIFORNIA
REORDER BY NUMBER 075AR

DRAWING NUMBER
8405

PLAN HOLD CORPORATION • IRVINE, CALIFORNIA
REORDER BY NUMBER 075AR

8405 5-10-90

C.S. 6505
($\Delta = 32^\circ 00'$) $\Delta = 32^\circ 01' 26''$
($R = 230.00$) $R = 230.00$
($A = 128.46$) $A = 128.55$
($LC = S 74^\circ 00' W 126.79$)
 $LC = S 73^\circ 58' 37'' W 126.88$

S.W. CORNER
JESSE OWNBY
D.L.C. No. 57

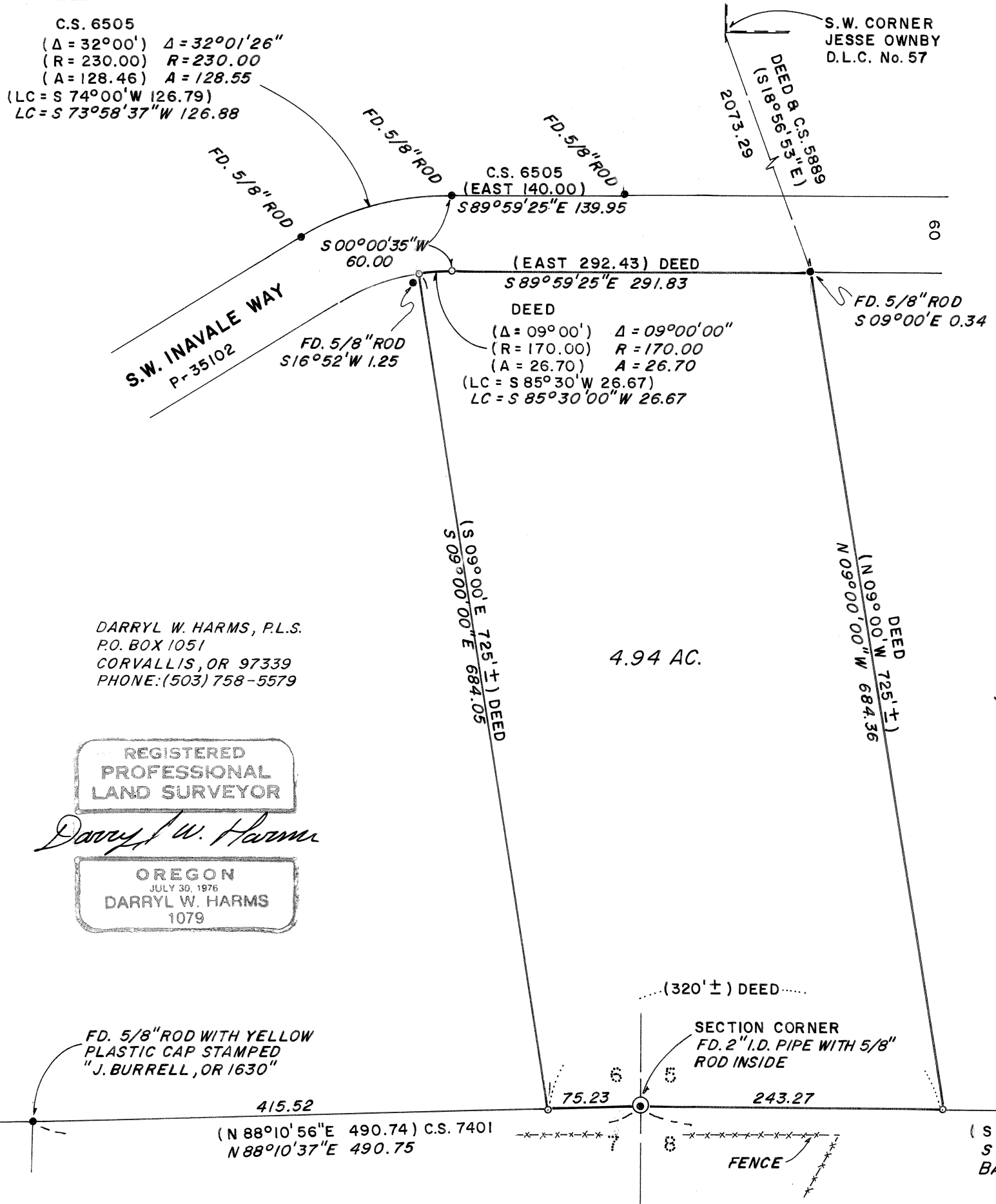
MAP OF SURVEY
for:

ANDREW COOPER
MAY 3, 1990

**Benton County
Surveyor's Office**

C.S. FILE NO. 8405
FILING DATE 5-10-90
FILE SIZE 11x17

S.W. 1/4, SECTION 5 & S.E. 1/4 SECTION 6
T. 13 S., R. 5 W., W.M., BENTON COUNTY,
OREGON



LEGEND

- MONUMENT FOUND, TYPE NOTED
 - SET 5/8" X 30" IRON ROD WITH YELLOW PLASTIC CAP STAMPED "D.W. HARMS, P.L.S. 1079"
 - () INFORMATION OF/OR CALCULATED FROM RECORD, SOURCE NOTED
- DEED M-57393-86, BENTON COUNTY DEED RECORDS
C.S. BENTON COUNTY SURVEY
I.D. INNER DIAMETER

NARRATIVE

THE PURPOSE OF THIS SURVEY IS TO MONUMENT THE CORNERS OF THE TRACT OF LAND DESCRIBED ON MICROFILM DEED No. M-57393-86.
FOR CONTROL OF THE SOUTHERLY RIGHT OF WAY OF S.W. INAVALE WAY, I HELD 60.00 FEET SOUTHERLY FROM THE MONUMENTS SET IN C.S. 6505 MARKING THE NORTH RIGHT OF WAY LINE, I HELD THE ROD SET IN C.S. 5889 (N.E. CORNER) AS BEING ON THE EAST LINE OF THIS TRACT BUT SOUTH OF THE RIGHT OF WAY AS NOTED, I HELD DEED ARC LENGTH ALONG THE SOUTH RIGHT OF WAY LINE TO POSITION THE NORTHWEST CORNER OF THIS TRACT THEN HELD DEED BEARING (S 09° 00' E) FROM THE N.E. & N.W. CORNERS TO THE NORTH LINE OF SECTIONS 5 & 6 AS MONUMENTED IN C.S. 7401.

DARRYL W. HARMS, P.L.S.
P.O. BOX 1051
CORVALLIS, OR 97339
PHONE: (503) 758-5579

REGISTERED
PROFESSIONAL
LAND SURVEYOR
Darryl W. Harms
OREGON
JULY 30, 1976
DARRYL W. HARMS
1079

