

DRAWING NUMBER
4114

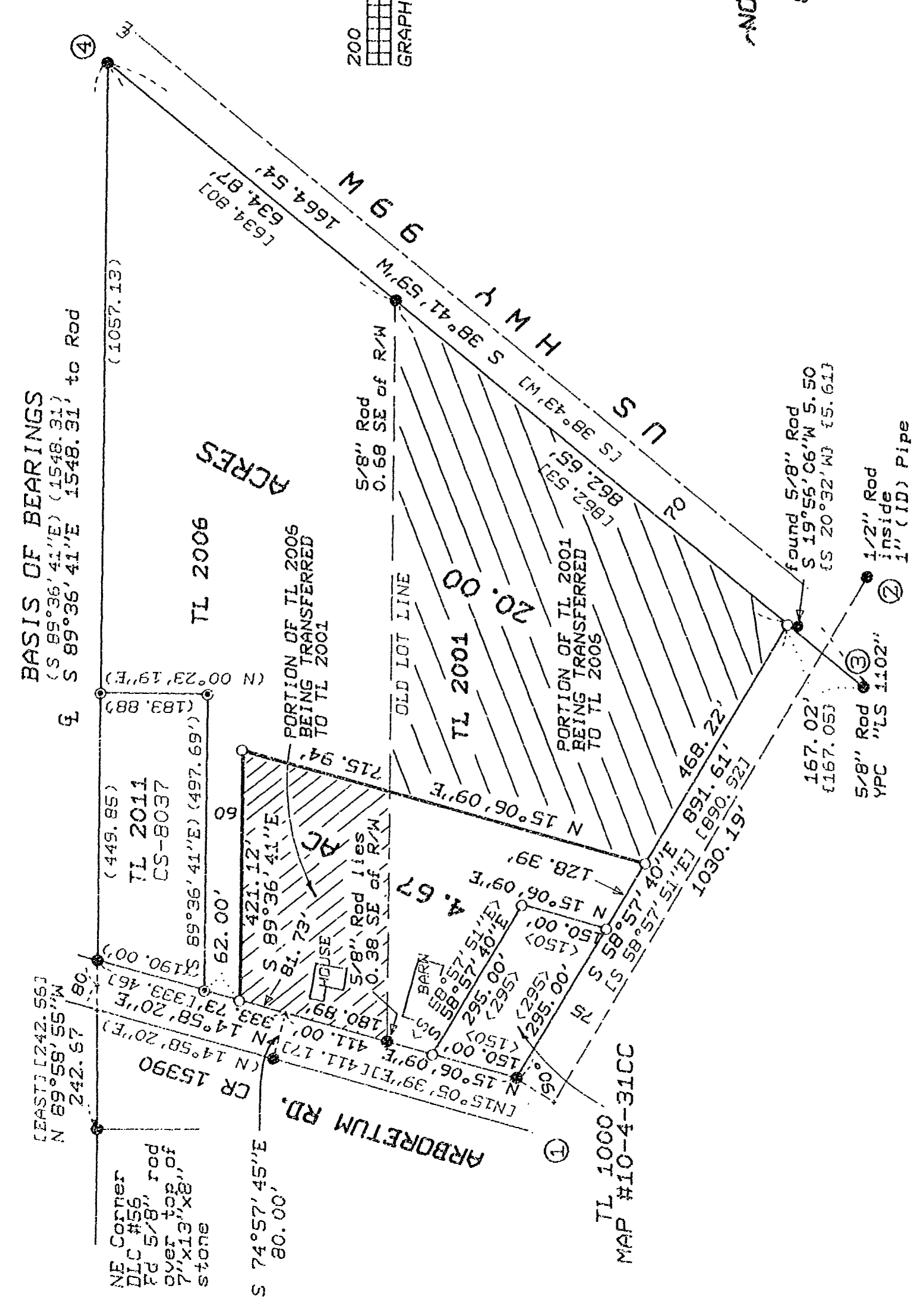
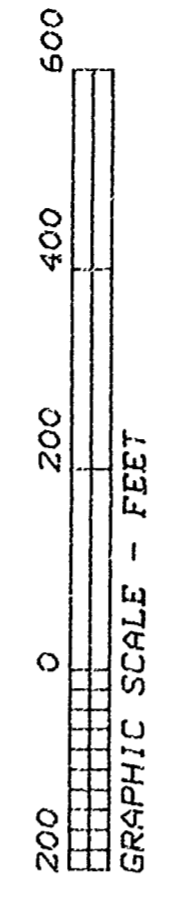
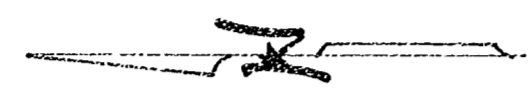
DRAWING NUMBER
8414

PLAN FIELD CORPORATION • IRVINE, CALIFORNIA
REGISTERED PROFESSIONAL LAND SURVEYOR
RECORDING NUMBER 07044
GROUP NO. 01 (MAY OR REG. 19)

PLAN FIELD CORPORATION • IRVINE, CALIFORNIA
REGISTERED PROFESSIONAL LAND SURVEYOR
RECORDING NUMBER 07044
GROUP NO. 01 (MAY OR REG. 19)

S474
5-31-1990

Benton County
Surveyor's Office
C.S. FILE NO. B444
FILING DATE 5-31-1990
FILE SIZE 15X17



REGISTERED
PROFESSIONAL
LAND SURVEYOR
Theodore James Langton
OREGON
JULY 13, 1979
THEODORE JAMES LANGTON
1923

NORTHSTAR SURVEYING, INC.
402 NW 5th St.
Corvallis, Oregon, 97330
PH: 757-9050

LOT LINE ADJUSTMENT NO. 6090-19
APPROVED 6/17/90
Gay Munnell-Mason 9/24/90
planning official date

LOT LINE ADJUSTMENT SURVEY
for

THAIYONG MAUICHIEH & DAWN MAY
in

THOMAS REED DLC NO. 57, 72 & 61
SW 1/4 SEC. 31, T10S, R4W and
NE 1/4 SEC. 1, T11S, R5W and
NW 1/4 SEC. 6, T11S, R4W, W.M.
BENTON COUNTY, OREGON

APRIL 13, 1990

LEGEND
 YPC.....Yellow Plastic Cap
 IDInside Diameter
 ().....Found monument: 5/8" x 30" rebar with red plastic cap stamped "NORTHSTAR PLS 1823"
 O.....Set Northstar monument (see above)
 ().....Record data from CS 8037
 { }.....Record data from CS 5235
 < >.....Record data from CS 7823
 < >.....Record data from M-118998-90, Benton County Deed Records.

NARRATIVE
 The purpose of this survey was to reconfigure the boundaries of Tax Lots 2001 and 2006 as shown. These tax lots were originally created as part of CS #5235 by Verle Moore in 1972. Actual creation by deed was in 1973. I had previously surveyed TL 2011 out of TL 2006 per CS #8037 in 1987. This survey was oriented to the same control. I tied additional monuments from CS #5235. It definitely appears that the most southerly corner rod of TL 2001 set for CS #5235 has been moved to the fence corner. This opinion is based upon my ties as well as those shown on CS #7823. I decided to recreate the southerly line of TL 2001 per Book 189, Page 527, county deed records, as was also used for CS #5235. I computed a dummy position 75 feet from (1), and then used (2) to control the bearing of the southerly line. I then intersected the 75 foot offset with the highway right-of-way line between (3) and (4). We set the corners for the boundary of TL 1000, Map #10-4-31CC per the deed description within M-118998-90.

