

DRAWING NUMBER  
**8432**

PLAN HOLD CORPORATION • IRVINE, CALIFORNIA  
REORDER BY NUMBER 0754R  
POSITION EDGE OF PRINT ON THIS LINE

DRAWING NUMBER  
**8432**

PLAN HOLD CORPORATION • IRVINE, CALIFORNIA  
REORDER BY NUMBER 0754R  
POSITION EDGE OF PRINT ON THIS LINE

8432 7-20-1990

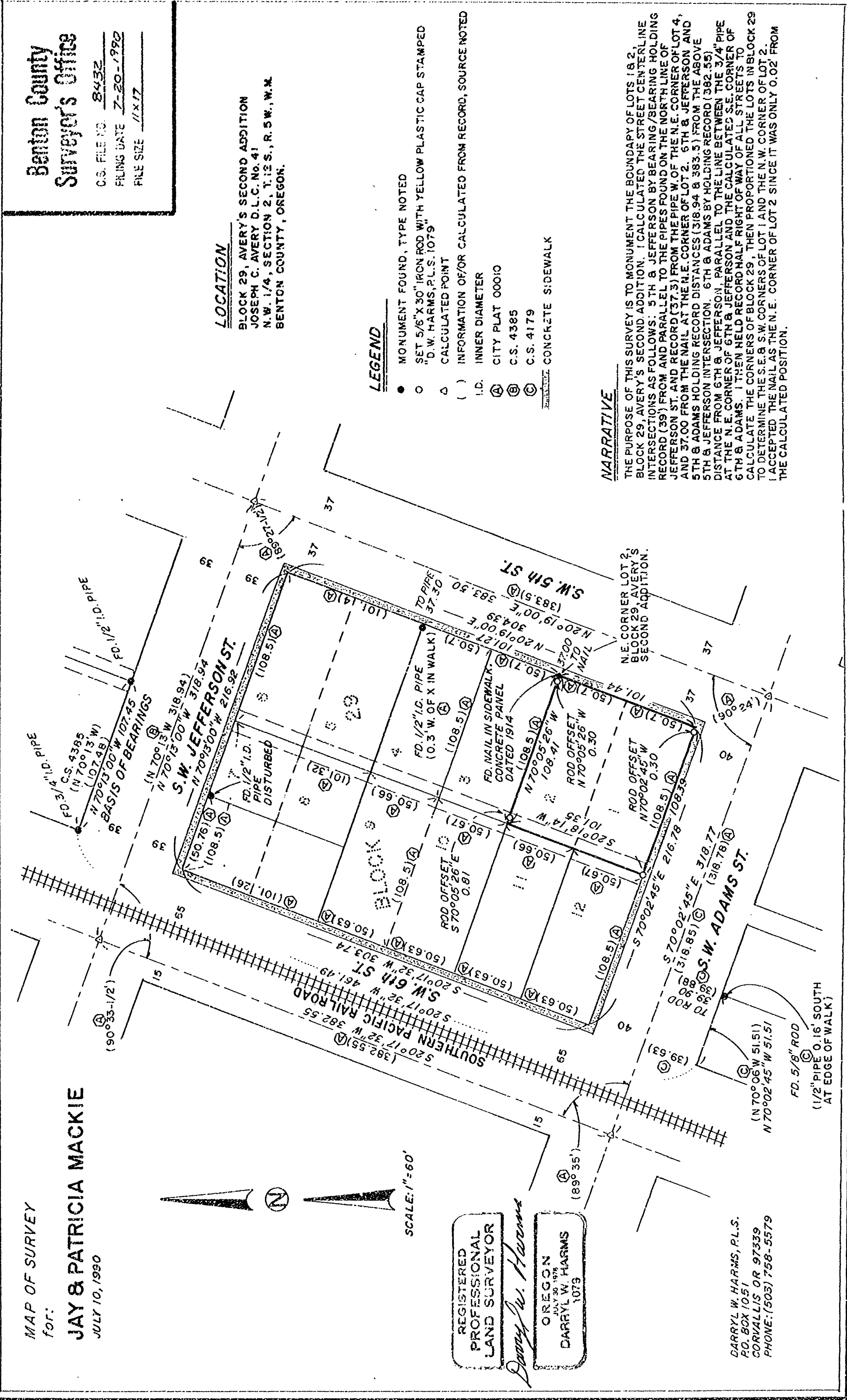
MAP OF SURVEY  
for:  
**JAY & PATRICIA MACKIE**  
JULY 10, 1990



SCALE: 1"=60'

REGISTERED  
PROFESSIONAL  
LAND SURVEYOR  
*Darryl W. Harms*  
OREGON  
JULY 20, 1978  
DARRYL W. HARMS  
1079

DARRYL W. HARMS, P.L.S.  
P.O. BOX 1051  
CORVALLIS OR 97339  
PHONE: (503) 758-5579



Benton County  
Surveyor's Office  
C.S. FILE NO. **8432**  
FILING DATE **7-20-1990**  
FILE SIZE **11x17**

**LOCATION**

BLOCK 29, AVERY'S SECOND ADDITION  
JOSEPH C. AVERY D.L.C. No. 41  
N.W. 1/4, SECTION 2, T.12 S., R. 5 W., W.M.  
BENTON COUNTY, OREGON.

**LEGEND**

- MONUMENT FOUND, TYPE NOTED
- SET 5/8" X 30" IRON ROD WITH YELLOW PLASTIC CAP STAMPED "D.W. HARMS, P.L.S. 1079"
- △ CALCULATED POINT
- ( ) INFORMATION OF/OR CALCULATED FROM RECORD, SOURCE NOTED
- I.D. INNER DIAMETER
- Ⓐ CITY PLAT 00010
- Ⓑ C.S. 4385
- Ⓒ C.S. 4179

**NARRATIVE**

THE PURPOSE OF THIS SURVEY IS TO MONUMENT THE BOUNDARY OF LOTS 1 & 2, BLOCK 29, AVERY'S SECOND ADDITION. I CALCULATED THE STREET CENTERLINE INTERSECTIONS AS FOLLOWS: 5TH & JEFFERSON BY BEARING/BEARING HOLDING RECORD (39') FROM AND PARALLEL TO THE PIPES FOUND ON THE NORTH LINE OF JEFFERSON ST. AND RECORD (37.3') FROM THE PIPE W. OF THE N.E. CORNER OF LOT 4, AND 37.00 FROM THE NAIL AT THE N.E. CORNER OF LOT 2. 6TH & JEFFERSON AND 5TH & ADAMS HOLDING RECORD DISTANCES (318.94 & 383.5) FROM THE ABOVE 5TH & JEFFERSON INTERSECTION. 6TH & ADAMS BY HOLDING RECORD (382.55) DISTANCE FROM 6TH & JEFFERSON. PARALLEL TO THE LINE BETWEEN THE 3/4" PIPE AT THE N.E. CORNER OF 6TH & JEFFERSON AND THE CALCULATED S.E. CORNER OF 6TH & ADAMS. I THEN HELD RECORD HALF RIGHT OF WAY OF ALL STREETS TO CALCULATE THE CORNERS OF BLOCK 29, THEN PROPORTIONED THE LOTS IN BLOCK 29 TO DETERMINE THE S.E. & S.W. CORNERS OF LOT 1 AND THE N.W. CORNER OF LOT 2. I ACCEPTED THE NAIL AS THE N.E. CORNER OF LOT 2 SINCE IT WAS ONLY 0.02' FROM THE CALCULATED POSITION.