

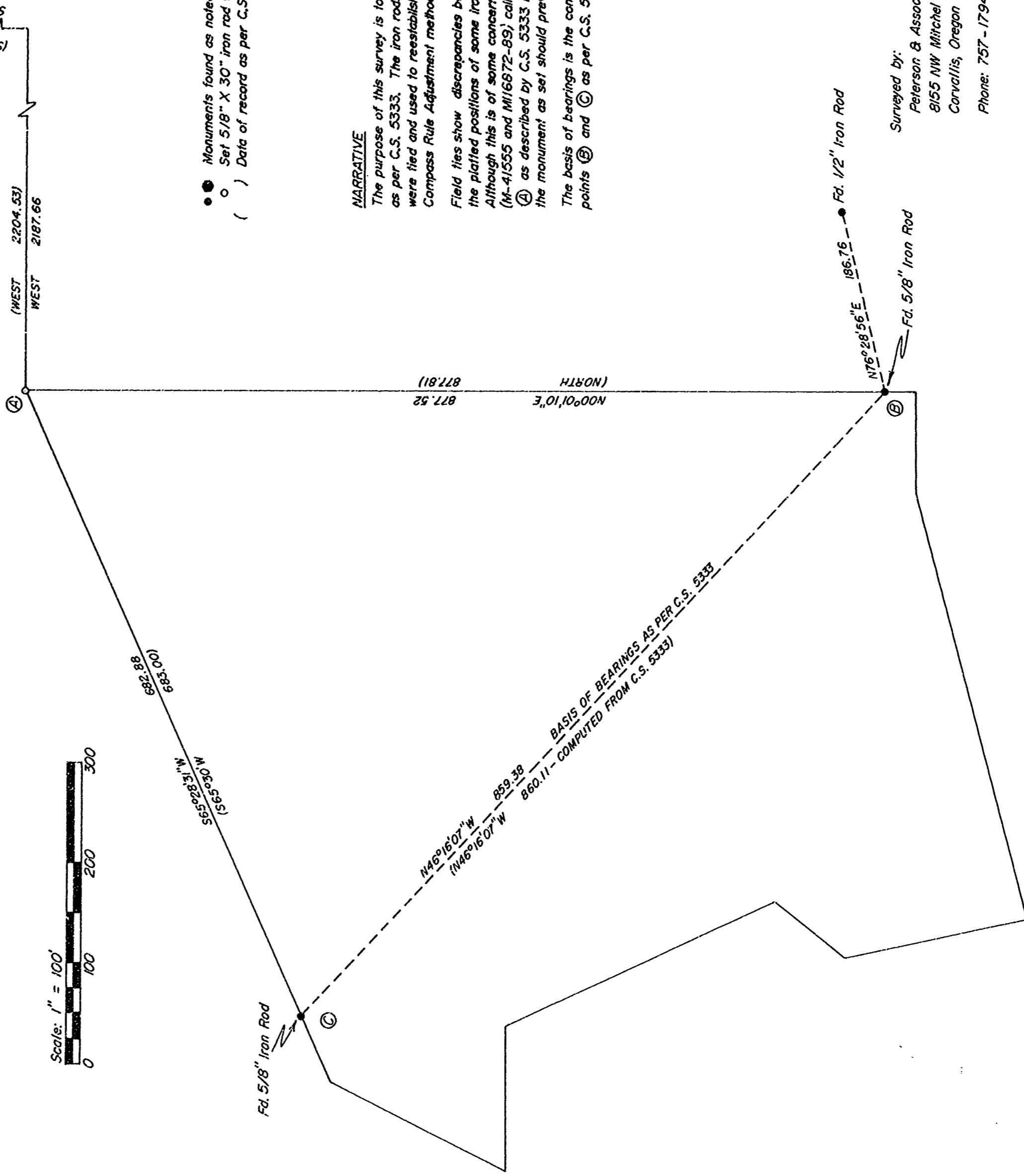
DRAWING NUMBER
8441

PLAN HOLD CORPORATION • IRVINE, CALIFORNIA
REORDER BY NUMBER 0734R
POSITION LINE OF PRINT ON THIS LINE

DRAWING NUMBER
8441

PLAN HOLD CORPORATION • IRVINE, CALIFORNIA
REORDER BY NUMBER 0734R
POSITION LINE OF PRINT ON THIS LINE

RECORD OF SURVEY
for HOLIDAY TREE FARMS
in the SE1/4 of SECTION 9, T10S, R6W
and the NE1/4 of SECTION 16, T10S, R6W
BENTON COUNTY, OREGON
AUGUST 9, 1990



Benton County
Surveyor's Office
C.S. FILE NO. 8441
FLING DATE 8-28-90
FILE SIZE 14" X 17"

- Monuments found as noted
- Set 5/8" X 30" iron rod with plastic cap (L.S1084)
- () Data of record as per C.S. 5333

NARRATIVE

The purpose of this survey is to reestablish point A as per C.S. 5333. The iron rods at points B and C were filed and used to reestablish point A, using the Compass Rule Adjustment method applied to record data. Field ties show discrepancies between the actual and the plotted positions of some iron rods set by C.S. 5333. Although this is of some concern, since the deeds (M-41555 and M16672-89) call for the iron rod at point A as described by C.S. 5333 I feel that the position of the monument as set should prevail. The basis of bearings is the computed bearing between points B and C as per C.S. 5333.

REGISTERED
PROFESSIONAL
LAND SURVEYOR
OREGON
JULY 31, 1978
JIM S. PETERSON
1084

Surveyed by:
Peterson & Associates
8155 NW Mitchell Dr.
Corvallis, Oregon 97330
Phone: 757-1794

