

DRAWING NUMBER
8488

PLAN HOLD CORPORATION • IRVINE, CALIFORNIA
RECORDS BY NUMBER 07344
NATIONAL BUREAU OF STANDARDS

DRAWING NUMBER

PLAN HOLD CORPORATION • IRVINE, CALIFORNIA
RECORDS BY NUMBER 07344
NATIONAL BUREAU OF STANDARDS

DRAWING NUMBER

PLAN HOLD CORPORATION • IRVINE, CALIFORNIA
RECORDS BY NUMBER 07344
NATIONAL BUREAU OF STANDARDS

DRAWING NUMBER
8488

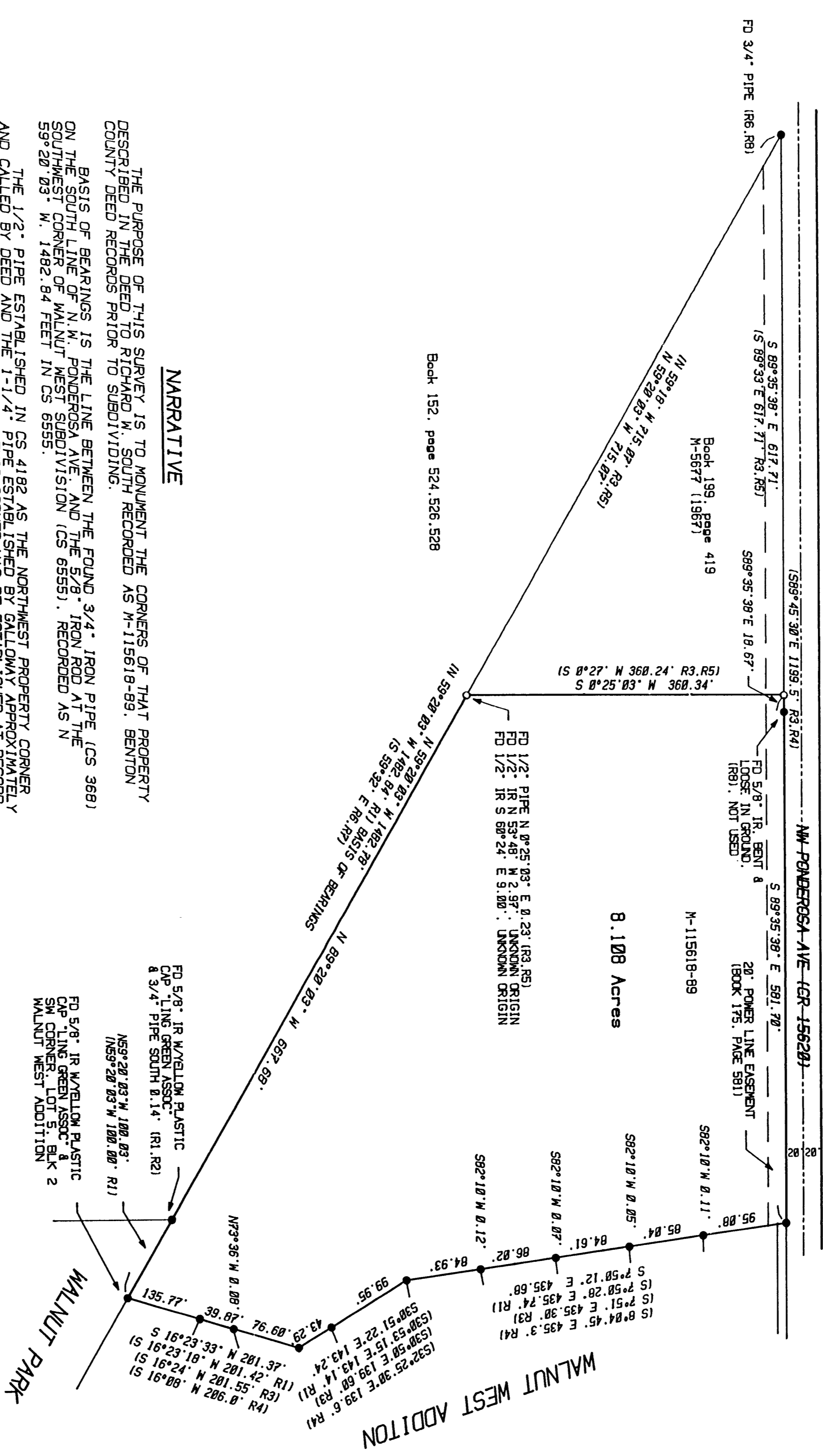
PLAN HOLD CORPORATION • IRVINE, CALIFORNIA
RECORDS BY NUMBER 07344
NATIONAL BUREAU OF STANDARDS

Benton County
Surveyor's Office

C.S. FILE NO. **8488**
FILING DATE **4-5-1991**
FILE SIZE **18x24**

- FOUND MONUMENT, 5/8" IRON ROD.
○ EXCEPT AS NOTED.
○ SET 5/8" X 30" IRON ROD W/YELLOW PLASTIC
○ CAP MARKED "PARSONS PLS1918"
○ IRON ROD
○ PIPE DIMENSIONS ARE INSIDE DIAMETER.
() INFORMATION OF RECORD
- REFERENCES:
R1 - CS 6555
R2 - CS 4321
R3 - CS 4182
R4 - CS 3712
R5 - BOOK 199, PAGE 419
R6 - CS 386
R7 - BOOK 152, PAGES 524, 526, 528
R8 - GALLOWAY 11-5-00009

LEGEND



NARRATIVE

THE PURPOSE OF THIS SURVEY IS TO MONUMENT THE CORNERS OF THAT PROPERTY DESCRIBED IN THE DEED TO RICHARD W. SOUTH RECORDED AS "N 115618-89," BENTON COUNTY DEED RECORDS PRIOR TO SUBDIVIDING.

BASIS OF BEARINGS IS THE LINE BETWEEN THE FOUND 3/4" IRON PIPE (CS 3661) ON THE SOUTH LINE OF WALNUT WEST SUBDIVISION (CS 6555), RECORDED AS "N 59°20'03" W, 1482.84 FEET IN CS 6555.

THE 1/2" PIPE ESTABLISHED IN CS 4182 AS THE NORTHWEST PROPERTY CORNER AND CALLED BY DEED AND THE 1-1/4" PIPE ESTABLISHED BY GALLOWAY APPROXIMATELY 35 FEET EAST WERE FOUND DESTROYED. THIS CORNER WAS RE-ESTABLISHED AT RECORD DISTANCE (617.71 FEET) ALONG THE SOUTH LINE OF N.M. PONDEROSA FROM THE 3/4" PIPE AT THE NORTHWEST CORNER DESCRIBED IN BOOK 199, PAGE 419. THE SOUTHERLY PROPERTY LINE IS ACCEPTED AS THE LINE ESTABLISHED IN CS 6555 BETWEEN PROPERTIES DESCRIBED IN BOOK 74, PAGE 12, BOOK 152, PAGES 524, 526, AND 528, AND M-50148. THE 1/2" PIPE AT SOUTHWEST CORNER ESTABLISHED IN CS 4182 WAS FOUND TO BE NORTH OF THIS LINE. AS THE DEED CALLS BOTH THE 1/2" PIPE AND THE LINE, THE PIPE WAS USED FOR ALIGNMENT OF THE WEST LINE AND A NEW MONUMENT SET ON THE SOUTH LINE. MONUMENTS AT ANGLE POINTS ALONG THE EAST LINE ARE DESCRIBED IN THE CURRENT DEED AND WERE ESTABLISHED IN CS 3712. WITH THE EXCEPTION OF THE SOUTHEAST CORNER, WHICH WAS ESTABLISHED ON THE TRUE SOUTH LINE OF THE PROPERTY.

REFERENCES:
BENTON COUNTY DEEDS: BOOK 74, PAGE 12; BOOK 152, PAGES 524, 526 & 528; BOOK 175, PAGE 581; BOOK 199, PAGE 419; M-5677 (1967); M-50148; N-15618-89; BOOK 175, PAGE 581
COUNTY SURVEYS: 386, 3172, 3887, 4321, 4182, 6555 PLAT OF WALNUT PARK, PLAT OF WALNUT WEST ADDITION, GALLOWAY PLAT 11-5-00009.

REGISTERED
PROFESSIONAL
LAND SURVEYOR
Tyler B. Parsons
OREGON
JULY 16, 1980
TYLER B. PARSONS
1918

**SURVEY FOR SOUTH
RICHARD W. SOUTH**
S1/4, Sec 21, T.11 S., R.5 W., W.M.
Corvallis, Benton County, Oregon
January 29, 1991
Scale: 1" = 100'
PARSONS SURVEYING
1915 S.E. Stone Street
Corvallis, OR 97333
(503) 752-7515
Project No. 9108