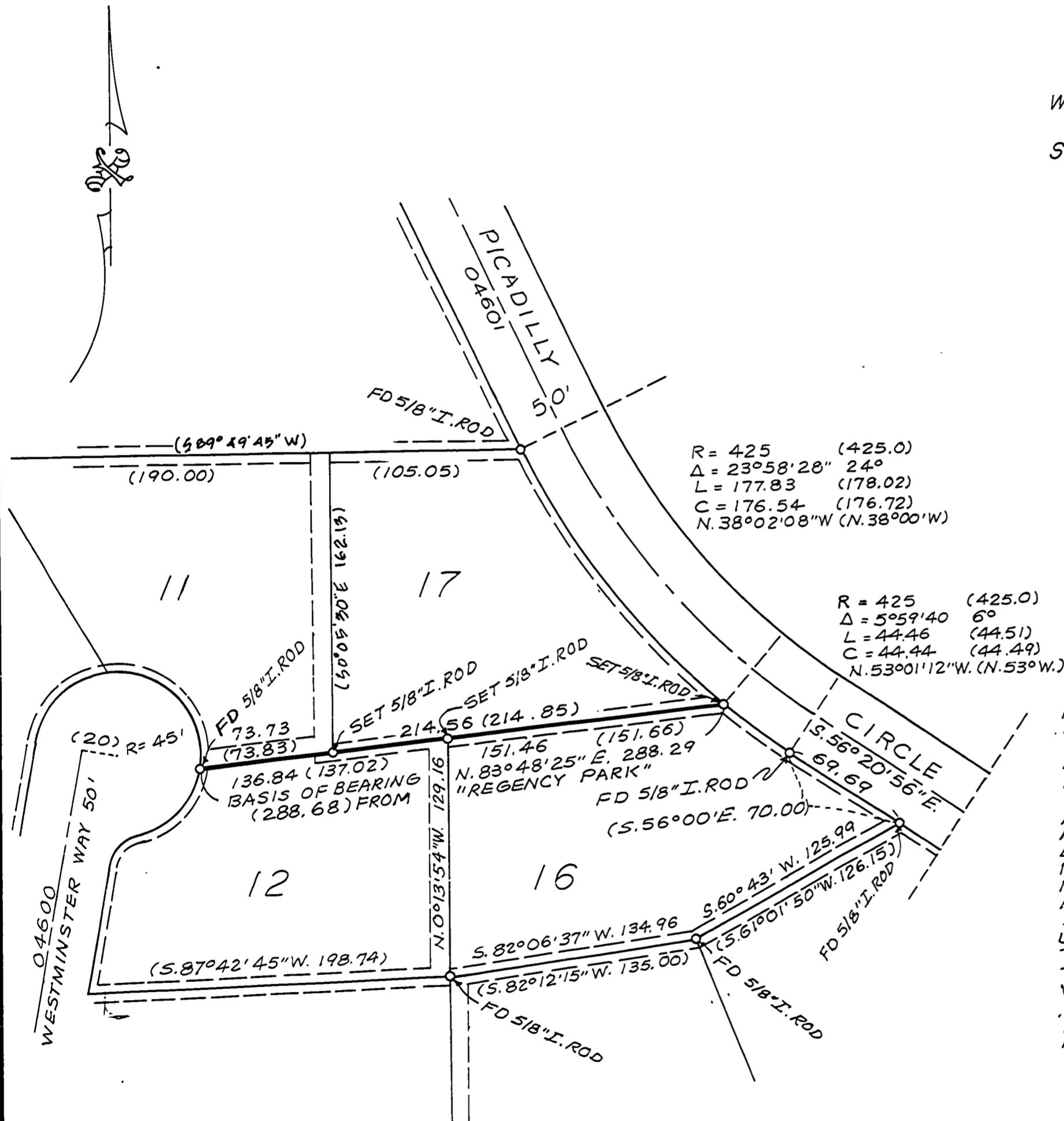


DRAWING NUMBER
8516
 PLAN HOLD CORPORATION • IRVINE, CALIFORNIA
 REORDER BY NUMBER 075AR
 POSITION EDGE OF PRINT ON THIS LINE

DRAWING NUMBER
8516
 PLAN HOLD CORPORATION • IRVINE, CALIFORNIA
 REORDER BY NUMBER 075AR
 POSITION EDGE OF PRINT ON THIS LINE

8516
 5-17-91

Record of Survey
 for
T. C. Management
 in
 REGENCY PARK
 West 1/2 of Section 24, T.10 S., R. 4 W., W.B. & M.
 Benton County, Oregon
 Scale: 1" = 60' April 8, 1991



INFORMATION IN PARENTHESES IS FROM 'REGENCY PARK' SUBDIVISION.

MONUMENTS SET ARE 5/8" X 30" REBAR WITH YELLOW PLASTIC CAPS MARKED 'L.S. 501'.

NARRATIVE: THE PURPOSE OF THIS SURVEY IS TO MONUMENT THE SOUTH LINE OF LOT 17. THE SOUTH-EAST CORNER OF LOT 17 WAS MISSING. IT WAS PROPORTIONED-IN USING THE MONUMENT FOUND AT THE NORTHEAST CORNER OF LOT 17 AND THE MONUMENT FOUND AT THE P.C. ON THE EAST BOUNDARY OF LOT 16. THE SOUTH-SOUTHWEST CORNER OF LOT 11 WAS LOCATED AND WAS USED IN CONJUNCTION WITH THE MONUMENT WE SET AT THE SOUTHEAST CORNER OF LOT 17 TO PROPORTION-IN THE SOUTHWEST CORNER OF LOT 17 AND THE NORTH-WEST CORNER OF LOT 16.

'REGENCY PARK' SUBDIVISION WAS THE EXCLUSIVE REFERENCE USED TO RE-ESTABLISH MONUMENTS.

REGISTERED
 PROFESSIONAL
 LAND SURVEYOR

Verle C. Moore
 OREGON
 MAY 13, 1988
 VERLE C. MOORE
 501

Benton County
 Surveyor's Office

C.S. FILE NO. 8516
 FILING DATE 5-17-1991
 FILE SIZE 14x17

MOORE SURVEYING - 424 SECOND AVENUE S.E., ALBANY, OREGON