

DRAWING NUMBER
8526
PLAN HOLD CORPORATION • IRVINE, CALIFORNIA
REORDER BY NUMBER 075AR
POSITION EDGE OF PRINT ON THIS LINE

DRAWING NUMBER
8526
PLAN HOLD CORPORATION • IRVINE, CALIFORNIA
REORDER BY NUMBER 075AR
POSITION EDGE OF PRINT ON THIS LINE

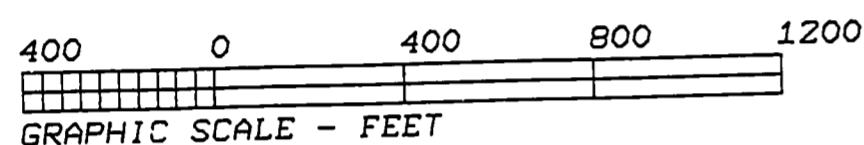
Benton County
Surveyor's Office

CC FILE NO. 8526
FILED DATE 6-10-1991
FILE SIZE 11X17

RECORD OF SURVEY
for
THE WEYERHAEUSER COMPANY

in
SOUTH 1/2 of SECTION 29,
T14S, R6W, W.M.
BENTON COUNTY, OREGON

MAY 28, 1991



NARRATIVE

The purpose of this survey was to mark the line as shown. W.C. Galloway had restored the section corner ④ per Hard Copy 14-6 # 18. I found the original corner stone at ①. I looked extensively for original evidence for the 1/4 corner at ③ with no luck. Therefore, I set ③ at the midpoint ① and ④. The West 1/16 corner ② was then set at the midpoint between ① and ③. There has been some previous unrecorded surveying along this line (probably by I.P. Miller crews) as evidenced by the yellow pipes we found along the line.

LEGEND

- Found monument per CORNER DATA.
- Set Monument: N*Mon = 5/8" x 30" rebar with red plastic cap stamped "NORTHSTAR PLS 1823" and white PVC riser.

— Property line marked with red flags and red painted blazes.

() ... Record Data from original GLO plat.

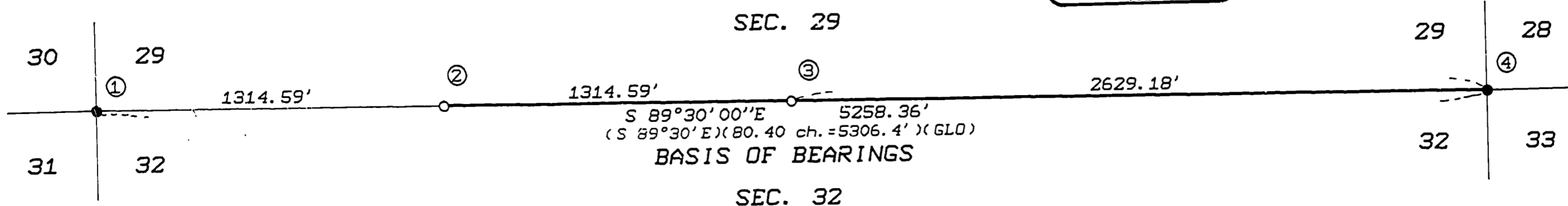
Note: Distances to bearing trees are to the side center of the tree unless otherwise noted. Bearings were taken with a hand compass declination 20°E

NORTHSTAR SURVEYING, INC.

402 N.W. 5th Street
Corvallis, Oregon 97330
Phone: 503-757-9050

CORNER DATA

- ① CORNER TO SECTIONS 29, 30, 31 and 32
Found 24" x 20" x 16" sandstone with 3 uniform notches on the east side. Corner lies approx. 300' east of a creek (fl. SW), approx. 700' east of a curve in grav. rd. # 112B, and 2' south of a yellow pipe riser. I chisel "X" on top of the stone.
BT's Found:
12" (8") D. Fir snag S 60°W (S 60°W) 48.4' (48.18') to opened face on which I find ax marks only.
BT's Set:
5" D. Fir N 37°E 1.9 ft. scribed "X" above "BT".
12" White Fir S 1°E 5.0 ft. scribed "T14SR6WS32" above "BT".
6" D. Fir N 75°W 45.3 ft. scribed "X" above "BT".
12" D. Fir S 73°W 26.9 ft. scribed "T14SR6WS31" above "BT".
- ② W 1/16 CORNER TO SECTIONS 29 and 32
Set a N*Mon. 1 ft. west of a yellow pipe riser. Corner lies approx. 500' SE of the end of grav. rd. # 112C.
BT's Set:
18" D. Fir N 70°W 22.6 ft. scribed "W1/16S29" above "BT".
Distance to PK nail set in FACE of tree below "BT".
18" D. Fir S 18°W 13.8 ft. scribed "W1/16S32" above "BT".
Distance to PK nail set in FACE of tree below "BT".
- ③ 1/4 CORNER TO SECTIONS 29 and 32
Set a N*Mon. on south slope .4 ft. north of a yellow pipe riser. Corner lies approx. 300' south of a switchback in a dirt road.
BT's Set:
10" D. Fir N 64°W 10.3 ft. scribed "1/4S29" above "BT". Distance to PK nail set in FACE of tree below "BT".
20" D. Fir S 15°W 27.3 ft. scribed "1/4S32" above "BT". Distance to PK nail set in FACE of tree below "BT".
- ④ CORNER TO SECTIONS 28, 29, 32 and 33
Found 1" bolt with 2" sq. head and 4" dia. washer 18" under surface. Corner lies 80' north of Howell Creek and approx. 800' south of a gravel road intersection.
BT's Found:
40" (14") White Fir stump West (S 87°30'W) 40.3 ft. (61 lks.) to face with scribing in rotting remains.
54" (13") D. Fir stump N 12°W (N 10°W) 17.5 ft. (26 lks.) to healed face.
40" (7") remains N 24°E (N 18°E) 49.3 ft. (69 lks.).
BT's Set:
5" D. Fir N 37°W 26.5 ft. scribed "X" above "BT".
28" White Fir N 24°E 82.8 ft. scribed "T14SR6WS28" above "BT".
8" D. Fir S 51°E 32.6 ft. scribed "X" above "BT".
28" Cedar S 52°W 75.1 ft. scribed "T14SR6WS32" above "BT".
Note: Yellow Pipe Risers are 1" (ID) pipes 48" out of ground.



REGISTERED
PROFESSIONAL
LAND SURVEYOR

Theodore J. Langton

OREGON
JULY 13, 1979
THEODORE JAMES LANGTON
1823