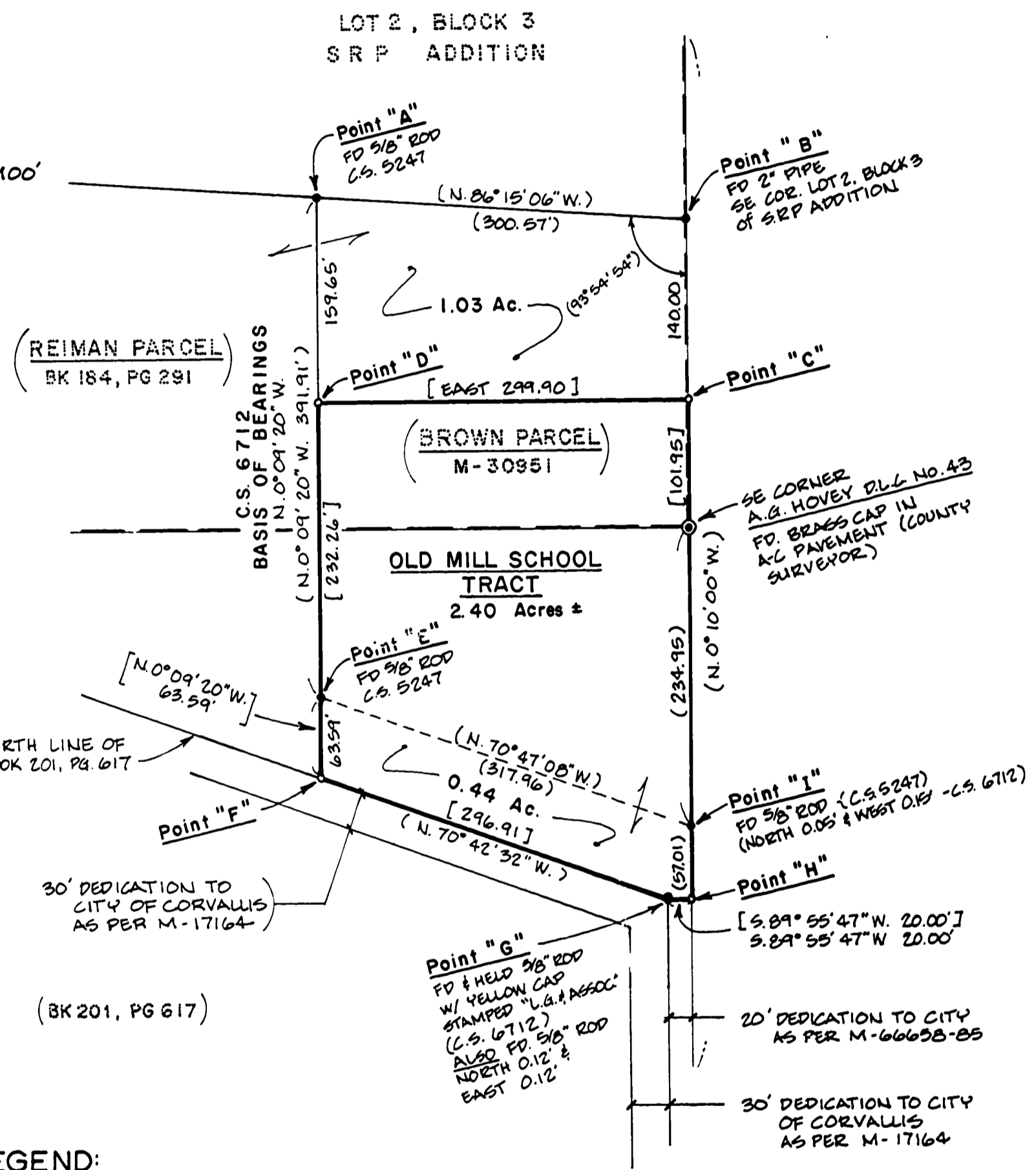
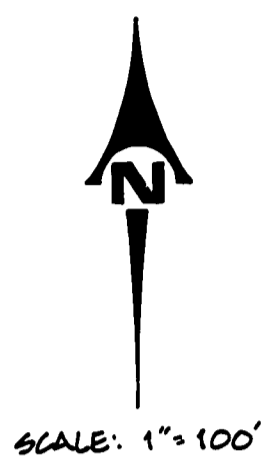


Benton County
Surveyor's Office
C.S. FILE NO. 8532
FILING DATE 7-9-1991
FILE SIZE 18 x 24



- LEGEND:**
- SET 3/8" x 30" REBAR ROD w/ RED PLASTIC CAP STAMPED: "K & D ENG. LS 1630"
 - FOUND RECORD MONUMENT, AS NOTED
 - () RECORD DATA FROM C.S. 6712, EXCEPT AS NOTED.
 - [] DATA COMPUTED FROM RECORD DATA.

RECORD OF SURVEY
FOR
STARKER FORESTS, INC.
LOCATED IN THE
A. G. HOVEY D.L.C. No. 43
SW 1/4 SEC. 4, T.12S, R.5 W., W.M.
CITY OF CORVALLIS, BENTON COUNTY, OREGON
15 JUNE 1991

NARRATIVE

PURPOSE:
TO ESTABLISH CORNERS OF THE TRACT FOR THE OLD MILL SCHOOL THAT HAS BEEN APPROVED AS PER CITY LOT LINE ADJUSTMENT No. LLA-91-6.

BASIS OF BEARINGS:
HELD FOUND MONUMENTS OF POINTS "A" AND "E."

BOUNDARY DETERMINATION:

- Point "D" SET 159.65 FEET FROM POINT "A" ON LINE "A-E"
- Point "C" SET 140.00 FEET FROM POINT "B" AT RECORD ANGLE FROM LINE "A-B."
- Point "F" SET ON THE EXTENSION OF LINE "A-E" AT THE CALCULATED DISTANCE OF 63.59 FEET, AS COMPUTED BY HOLDING RECORD INFORMATION FROM C.S. 6712.
- Point "H" ESTABLISHED AT RECORD DISTANCE FROM POINT "I" AND SET 20 FEET FROM POINT "G" BASED UPON CALCULATED BEARING AND DISTANCE.

APPROVED:

BY debt 7-3-91
CORVALLIS CITY ENGINEER DATE

BY Alle/Class 7/3/91
DEVELOPMENT SERVICES MANAGER DATE

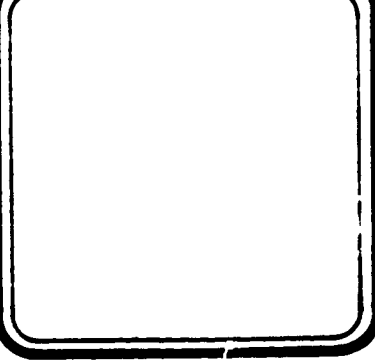
REGISTERED
PROFESSIONAL
LAND SURVEYOR
Jack R. Burrell
OREGON
JACK R. BURRELL
1620



K & D ENGINEERING, INC.
202 N.W. HICKORY ST. - ALBANY, OREGON - 97321
P.O. BOX 725 503-928-2583

CIVIL ENGINEERING LAND PLANNING
SURVEYING CONSTRUCTION MANAGEMENT

OLD MILL SCHOOL L.L.A.
SURVEY FOR: STARKER FORESTS, INC.



DSGN. BY:	SHEET:
DWG. BY: M.M.S.	ONE
CHKD. BY: J.R.B.	
SCALE: 1"=100'	
DATE: JUNE 15, 1991	OF:
PROJECT NO.: 91-36	ONE