

DRAWING NUMBER  
**8535**

PLAN HOLD CORPORATION • IRVINE, CALIFORNIA

REORDER BY NUMBER 075AR

DRAWING NUMBER  
**8535**

PLAN HOLD CORPORATION • IRVINE, CALIFORNIA

REORDER BY NUMBER 075AR

8-8-91  
8535

PARCEL LINE ADJUSTMENT APPROVED

*Rogel M. Klein* 2-5-92  
PLANNING OFFICIAL DATE

Benton County  
Surveyor's Office

C.S. FILE NO. 8535  
FILING DATE 8-8-1991  
FILE SIZE 11X17

LOT LINE ADJUSTMENT SURVEY  
for:

**PHILLIP and SHARON WILLIAMS**

APRIL 18, 1991

in:

THE BUSHROD W. WILSON D.L.C. No. 64  
N.W. 1/4 SECTION 30, T.12S., R.5W., W.M.,  
BENTON COUNTY, OREGON

**LEGEND**

- FD. 3/4" INNER DIAMETER IRON PIPE
- SET 5/8" X 30" IRON ROD WITH YELLOW PLASTIC CAP STAMPED "D.W. HARMS, P.L.S. 1079"
- ( ) INFORMATION OF/OR CALCULATED FROM C.S. 4608, EXCEPT AS NOTED
- B.C.D.R. BENTON COUNTY DEED RECORDS
- (A) DEED M-16910, B.C.D.R.
- (B) DEED M-101900-88, B.C.D.R.

**NARRATIVE**

THE PURPOSE OF THIS SURVEY IS TO MONUMENT THE LINE ADJUSTED BY (B) AND THE FLAG OF (A). THE TWO 3/4" IRON PIPES MARKING THE LINE TO BE ADJUSTED ARE CALLED FOR IN (A) AND WERE APPARENTLY SET FROM THE ANGLE POINT IN THE EAST LINE (136.24 VS 136.15), I MONUMENTED THE ADJUSTED LINE 15.00 FT. SOUTH OF THE PIPES BUT HELD DEED DISTANCE (210') FOR THE LENGTH OF THE LINE. I MONUMENTED THE WEST LINE OF THE FLAG 160' EAST OF THE BASIS OF BEARING LINE AND THE EAST LINE OF THE FLAG DUE SOUTH OF THE WEST END OF THE ADJUSTED LINE. FOUND 3/4" PIPES ON THE NORTH LINE OF DEERHAVEN DRIVE WERE HELD IN POSITION AND CURVE DATA CALCULATED HOLDING RECORD RADIUS (316.48) FROM THE TANGENT WEST OF THE CURVE.

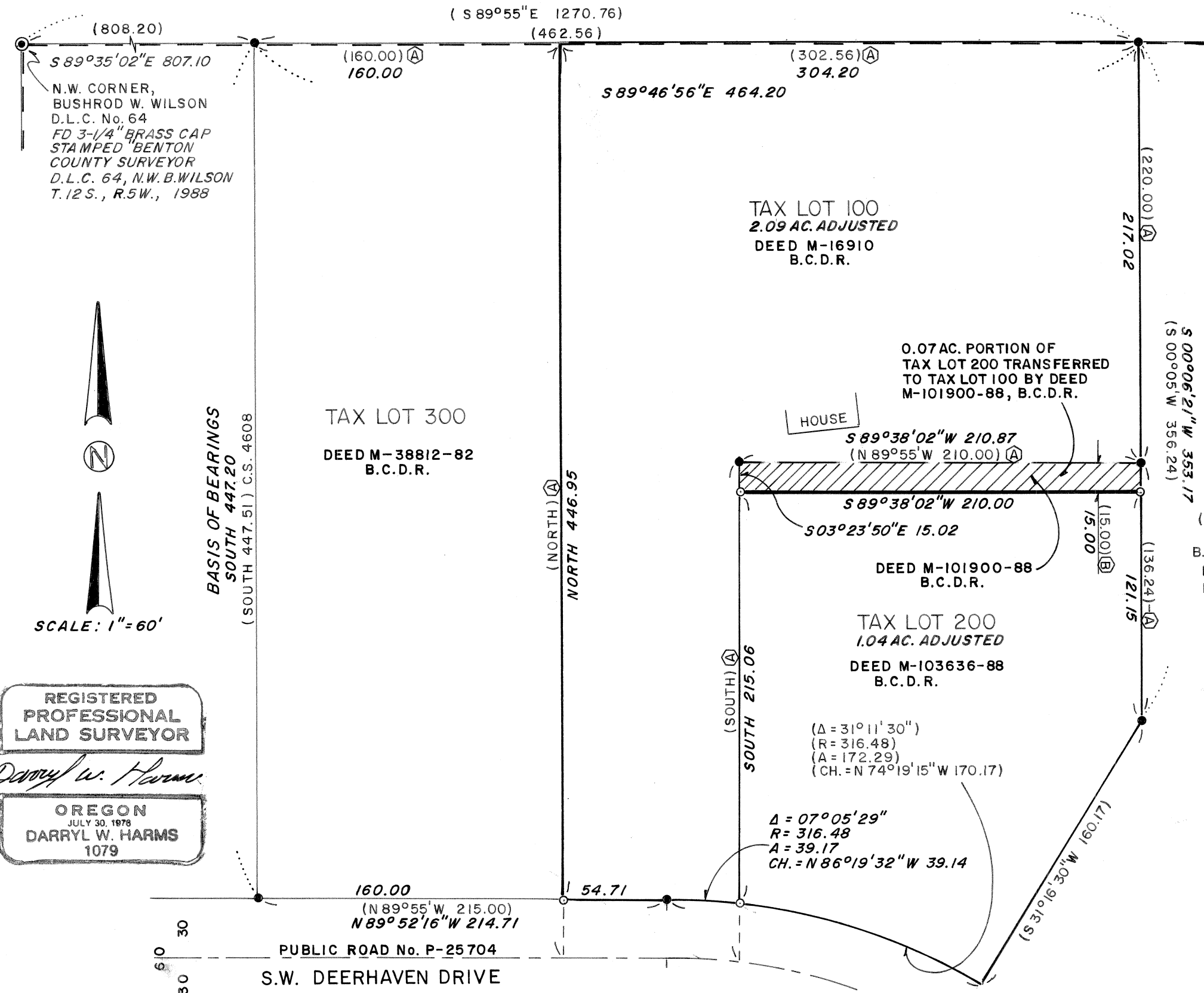
DARRYL W. HARMS, P.L.S.  
P.O. BOX 1051  
CORVALLIS, OR 97339  
PHONE: (503) 758-5579

TAX LOT 100  
2.09 AC. ADJUSTED  
DEED M-16910  
B.C.D.R.

0.07 AC. PORTION OF  
TAX LOT 200 TRANSFERRED  
TO TAX LOT 100 BY DEED  
M-101900-88, B.C.D.R.

TAX LOT 300  
DEED M-38812-82  
B.C.D.R.

TAX LOT 200  
1.04 AC. ADJUSTED  
DEED M-103636-88  
B.C.D.R.



REGISTERED  
PROFESSIONAL  
LAND SURVEYOR

*Darryl W. Harms*

OREGON  
JULY 30, 1978  
DARRYL W. HARMS  
1079

30  
60  
30