

DRAWING NUMBER
8558

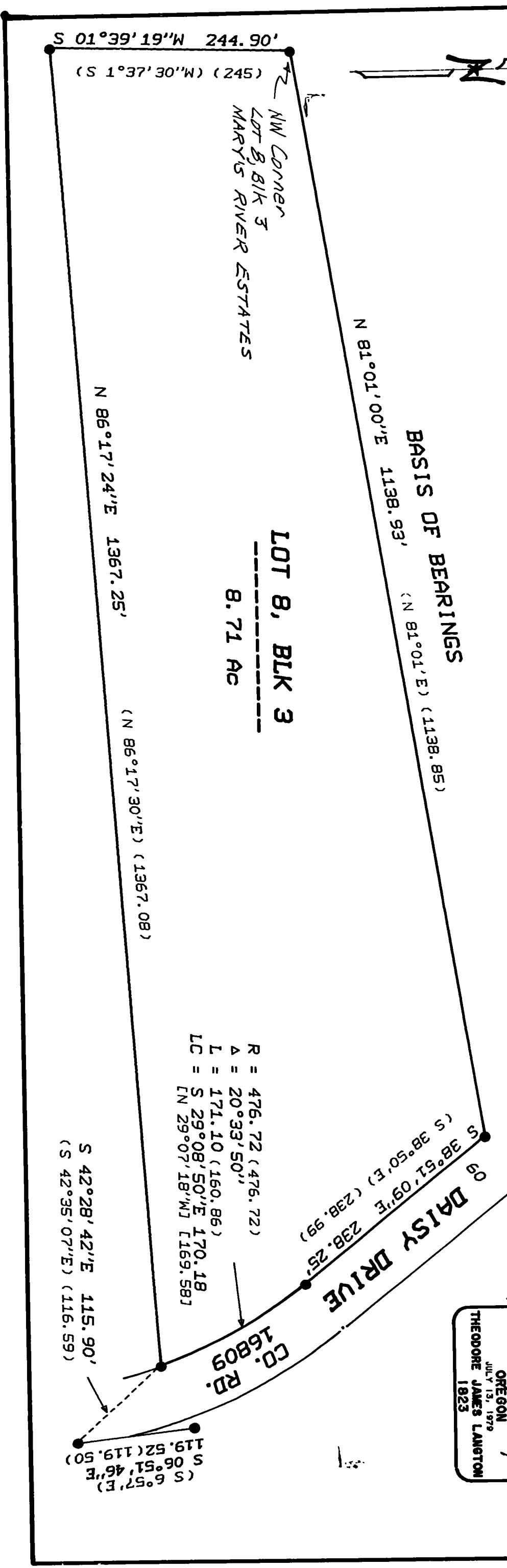
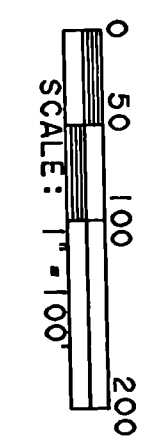
DRAWING NUMBER
8558

PLAN HOLD CORPORATION • IRVINE, CALIFORNIA
REORDER BY NUMBER 07348
REGIONAL OFFICE OF PRINT ON THIS LINE

PLAN HOLD CORPORATION • IRVINE, CALIFORNIA
REORDER BY NUMBER 07348
REGIONAL OFFICE OF PRINT ON THIS LINE

8558
10-14-91

RECORD OF SURVEY
for
FRANK BARNECOTT
of
LOT 8, BLK 3, MARY'S RIVER ESTATES
in
NW 1/4 SECTION 2, T12S, R6W, M. M.
PATRICK EGAN DLC, NC. 69
BENTON COUNTY, OREGON
SEPTEMBER 25, 1991



NORTHSTAR SURVEYING, INC.
402 N.W. 5th Street
Corvallis, Oregon 97330
Phone: 503-757-9050

REGISTERED
PROFESSIONAL
LAND SURVEYOR
Theodore James Langton
OREGON
JULY 13, 1979
THEODORE JAMES LANGTON
1923

NARRATIVE
The purpose of this survey was to find the corner monuments of Lot 8 and to determine how their actual relationship compares to the plat of MARY'S RIVER ESTATES. Our field survey shows that the monuments relate well to each other compared to the plat in all cases except for the short curve section of the road. By doing a mathematical closure check around the lot I find that it does not close using the record arc length and radius but if I force closure by inverting the curve section the monuments are in good position. I confirmed this by tying into the rods on the railroad R/W as shown. The record information was computed using the overall arc length (160.86 + 104.42). My conclusion is simply that there is a transcription error on the plat.

LEGEND
●..... Found monument: 5/8" Iron Rod.
()..... Record data from the plat of MARY'S RIVER ESTATES.
[]..... Record data calculated from the plat but ignoring record curve data.

Benton County
Surveyor's Office
C.S. FILE NO. 8558
FILING DATE 10-14-1991
FILE SIZE 11X17