

DRAWING NUMBER  
**8573**

DRAWING NUMBER

DRAWING NUMBER

DRAWING NUMBER  
**8573**

PLAN HOLD CORPORATION • IRVINE, CALIFORNIA  
REORDER BY NUMBER 075AR  
POSITION EDGE OF PRINT ON THIS LINE

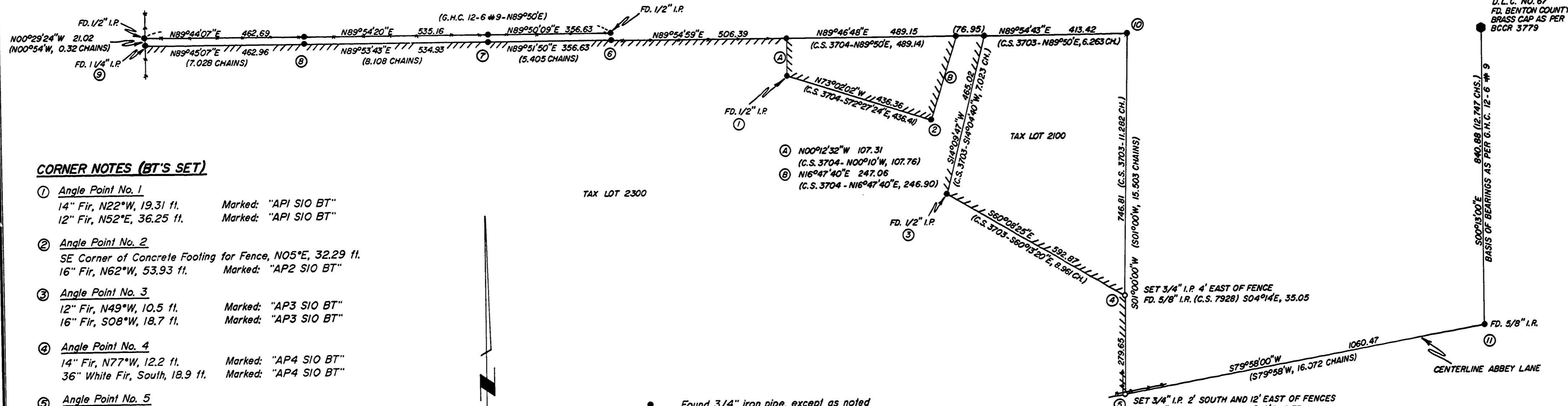
PLAN HOLD CORPORATION • IRVINE, CALIFORNIA  
REORDER BY NUMBER 075AR  
POSITION EDGE OF PRINT ON THIS LINE

PLAN HOLD CORPORATION • IRVINE, CALIFORNIA  
REORDER BY NUMBER 075AR  
POSITION EDGE OF PRINT ON THIS LINE

PLAN HOLD CORPORATION • IRVINE, CALIFORNIA  
REORDER BY NUMBER 075AR  
POSITION EDGE OF PRINT ON THIS LINE

**RECORD OF SURVEY**  
for **STARKER FORESTS, INC.**  
in the **S1/2 SECTION 10, T12S, R6W, W.M.**  
and the **THOMAS J. BLAIR D.L.C. NO. 68**  
**BENTON COUNTY, OREGON**  
**OCTOBER 11, 1991**

**Benton County**  
**Surveyor's Office**  
C.S. FILE NO. 8573  
FILING DATE 12-7-1991  
FILE SIZE 18x24



**CORNER NOTES (BT'S SET)**

- ① **Angle Point No. 1**  
14" Fir, N22°W, 19.31 ft. Marked: "AP1 SIO BT"  
12" Fir, N52°E, 36.25 ft. Marked: "AP1 SIO BT"
- ② **Angle Point No. 2**  
SE Corner of Concrete Footing for Fence, N05°E, 32.29 ft.  
16" Fir, N62°W, 53.93 ft. Marked: "AP2 SIO BT"
- ③ **Angle Point No. 3**  
12" Fir, N49°W, 10.5 ft. Marked: "AP3 SIO BT"  
16" Fir, S08°W, 18.7 ft. Marked: "AP3 SIO BT"
- ④ **Angle Point No. 4**  
14" Fir, N77°W, 12.2 ft. Marked: "AP4 SIO BT"  
36" White Fir, South, 18.9 ft. Marked: "AP4 SIO BT"
- ⑤ **Angle Point No. 5**  
12" Fir, S61°E, 12.0 ft. Marked: "AP5 SIO BT"  
14" Fir, N59°W, 30.2 ft. Marked: "AP5 SIO BT"
- ⑥ **Angle Point No. 6**  
9" Fir, N20°W, 12.6 ft. Marked: "AP6 SIO BT"  
8" Fir, S72°E, 17.7 ft. Marked: "AP6 SIO BT"
- ⑦ **Angle Point No. 7**  
7" Fir, S05°W, 7.6 ft. Marked: "AP7 SIO BT"  
10" Fir, S88°W, 10.6 ft. Marked: "AP7 SIO BT"
- ⑧ **Angle Point No. 8**  
14" Fir, N38°E, 11.0 ft. Marked: "AP8 SIO BT"  
18" Alder, N25°W, 19.6 ft. Marked: "AP8 SIO BT" (in bark)
- ⑨ **Angle Point No. 9**  
12" Fir, N30°W, 6.1 ft. Marked: "AP9 SIO BT"  
10" Fir, S53°E, 14.0 ft. Marked: "AP9 SIO BT"

- Found 3/4" iron pipe, except as noted
- Found Benton County Brass Cap
- Set 3/4" X 30" iron pipe with plastic cap (LS 1084)
- ( ) Data of record as per G.H.C. 12-6 #9
- (C.S.) Data of record as per the indicated C.S.
- ////// Boundary lines posted (with 6" fiberglass posts) and blazed
- Existing fence lines
- I.P. Iron pipe
- I.R. Iron rod
- BCCR Benton County Corner Restoration
- G.H.C. Galloway Hard Copy
- BT distances are to the center of the tree
- Iron pipe diameters are inside measure

**NARRATIVE**

The purpose of this survey is to establish the SE corner of Tax Lot 2100 and the SE corner of Tax Lot 2300, and to mark the indicated boundary lines.

The East line of Tax Lots 2100 and 2300 is the East line of the Hudson property as per Page 756 of Book 170 of the Benton County Deed Records. Said line is called to be S01°W of point ⑩. Using the indicated line from G.H.C. 12-6 #9 as the base bearing I reestablished the centerline of the 1899 County Road at record bearing from point ⑩. At a point S01°W of point ⑩ I established the SE corner of Tax Lot 2300. (Monuments set by C.S. 283 along the centerline of the 1899 County Road were searched for but not found.)

I established the SE corner of Tax Lot 2100 along the East line of the Hudson property at record bearing from point ③. (The record bearing of the South line of Tax Lot 2100 was related to my bearings by the mean difference in bearing between my bearings and C.S. 3703 bearings for the North and West lines of Tax Lot 2100.)

A system of closed traverses, using a Topcon GTS-2, was used to perform this survey.

Surveyed by:  
Peterson & Associates  
8155 NW Mitchel Drive  
Corvallis, Oregon 97330  
Phone: 757-1794

